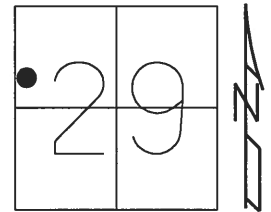


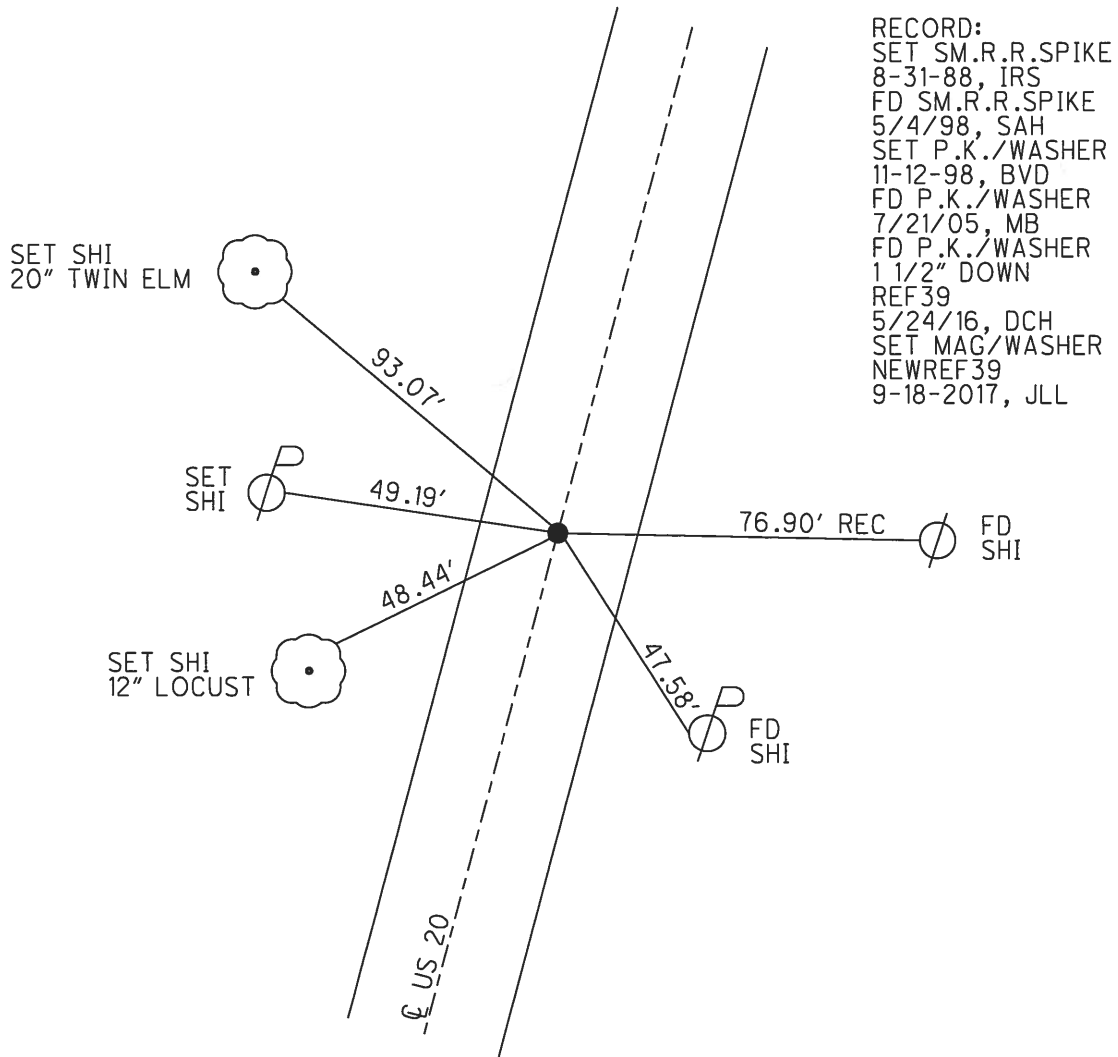
O.D.O.T. DISTRICT 2 SURVEY OFFICE (USE ONLY)

PERSONNEL \_\_\_\_\_ REFERENCE NO. 39 SHEET 5 OF 24  
 NOTES POORE DATE 7-25-17 ROUTE US 20  
 H.C. LEU WEATHER SUNNY COUNTY WILLIAMS  
 R.C. CARSON TEMP. 71° F TOWNSHIP MADISON  
 \_\_\_\_\_ HOMAN \_\_\_\_\_ SECTION 29  
 \_\_\_\_\_ T 9 S R 2 W

TYPE MONUMENT P.K./WASHER  
~~ON SURFACE~~ - BELOW 1 1/2"  
 LEFT - ℄ PAV'T - RIGHT ON  
12.1' TO RT EDGE PAVEMENT  
 S.L.M. 686+10.20



Grid: Northing: 731675.035 Easting: 1402437.785



# O.D.O.T. DISTRICT 2 SURVEY OFFICE

PERSONNEL

REFERENCE NO. 39

SHEET 5 OF 16

NOTES S. Huss

H.C. Dan Wassen

R.C. S. Huss

DATE 5-4-98

WEATHER Cl dy - Sprinkles

TEMP. +58°F

ROUTE U.S. -20

COUNTY Williams

TOWNSHIP Bridgewater

SECTION 29

T9 S R 2 W

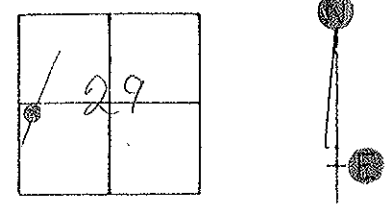
TYPE MONUMENT SMALL RR. SPK.

(ON SURFACE) - ~~BELOW~~ YES

LEFT- ~~PAV~~ RIGHT .4 Lt

11.8' TO Lt EDGE PAVEMENT

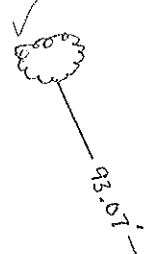
S.L.M. 685+12 684+08



Record  
Set Sm. RR Spk.  
8-31-88 IRS

Set N/shi in  
20" Twin Elm  
S/E S

~~FD. SHI.~~



53.98'

U.S. 20

U.S. 20



76.90'

P  
FD.  
SHI.

SET PK/WASHER  
11-12-98  
B.V.D.



Preventive Maintenance  
Smooth Seal 2005  
Exist. Point Uncovered  
Date 7/21/05 M.B.

PERSONNEL TITLE PERSONNEL TITLE

COUNTY Williams DATE 28 Sept. 77

S/gnc  
E  
Coew

S. R. US #20 WEATHER Fair

SEC. 20-A North TEMP. 65°

DESCRIPTION References to Control Points JOB NO. \_\_\_\_\_

LEFT CENTER LINE RIGHT

