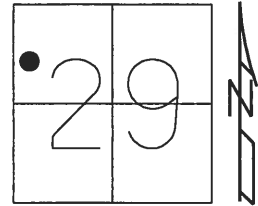


O.D.O.T. DISTRICT 2 SURVEY OFFICE (USE ONLY)

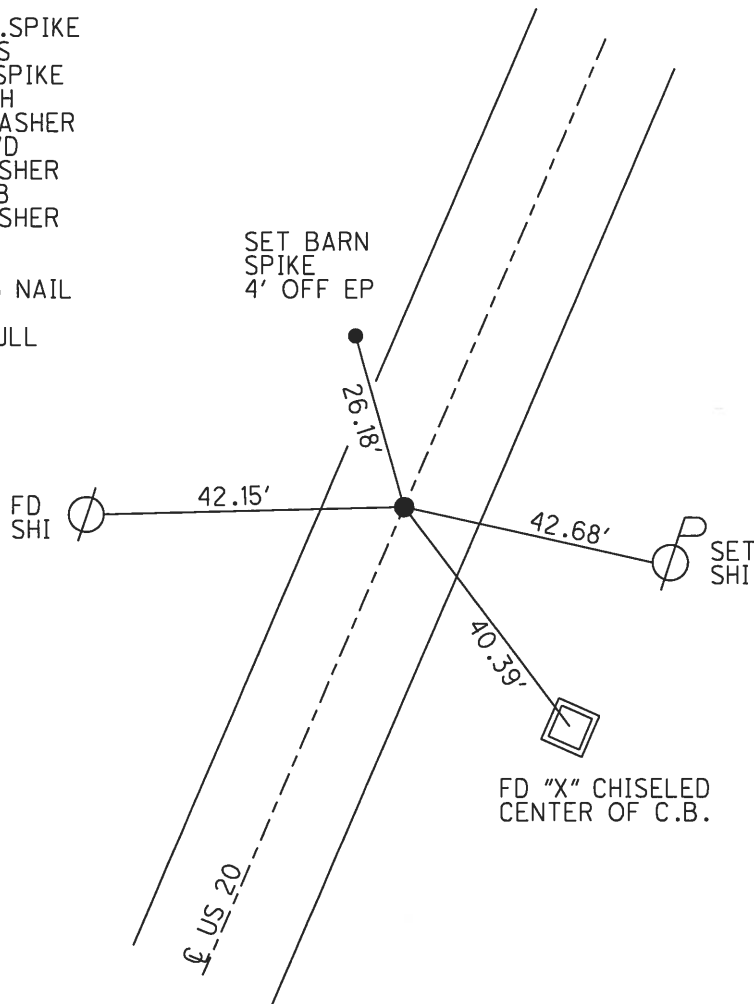
PERSONNEL	REFERENCE NO.	39 A	SHEET	6	OF	24
NOTES	POORE	DATE	7-25-17	ROUTE	US 20	
H.C.	LEU	WEATHER	SUNNY	COUNTY	WILLIAMS	
R.C.	CARSON	TEMP.	71° F	TOWNSHIP	MADISON	
	HOMAN			SECTION	29	
				T	9	S
				R	2	W

TYPE MONUMENT P.K./WASHER  
~~ON SURFACE~~ - BELOW 1 1/2"  
 LEFT - ☉ PAV'T - RIGHT ON  
12.2' TO LT EDGE PAVEMENT  
 S.L.M. 690+72.69



Grid: Northing: 732122.226 Easting: 1402555.63

RECORD:  
 SET SM.R.R.SPIKE  
 8-31-88, IRS  
 FD SM.R.R.SPIKE  
 5/6/98, SAH  
 SET P.K./WASHER  
 11-12-98, BVD  
 FD P.K./WASHER  
 7/21/05, MB  
 FD P.K./WASHER  
 1 1/2" DOWN  
 REFA39  
 SET SM.MAG NAIL  
 NEWREFA39  
 9-18-2017, JLL



# O.D.O.T. DISTRICT 2 SURVEY OFFICE

PERSONNEL

REFERENCE NO. 39-A SHEET 6 OF 16

NOTES S. Huss

H.C. B. VanNess

R.C. B. Condes

DATE 5-6-98

WEATHER Cldy. Rain

TEMP. +58°F

ROUTE US-20

COUNTY Williams

TOWNSHIP Bridgewater

SECTION 29

T 9 S R 2 W

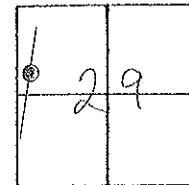
TYPE MONUMENT SMALL RR. SPK.

ON SURFACE - ~~BELOW~~ YES

LEFT ~~PAV'T.~~ RIGHT 1' LT.

11.2 TO 11. EDGE PAVEMENT

S.L.M. 699761 688+71

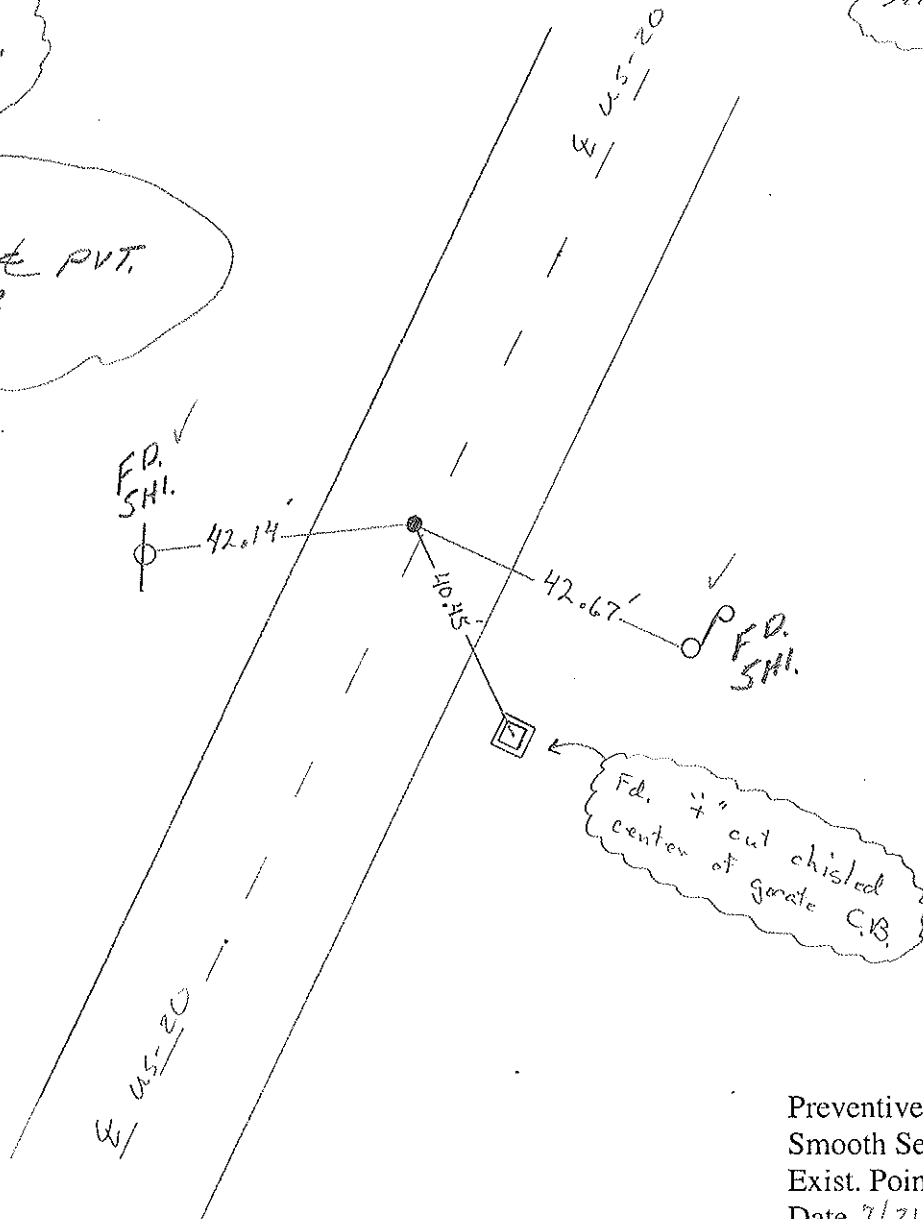


Record

Set Sm. RR Spk,  
8-31-88 IRS

Set PK/W BWS  
11-12-98

RECORD:  
85' ± N. of E PVT.  
Co. RD. #13



Preventive Maintenance  
Smooth Seal 2005  
Exist. Point Uncovered  
Date 7/21/05 M.B.

PERSONNEL	TITLE	PERSONNEL	TITLE	COUNTY	DATE	S. R.	WEATHER	SEC.	TEMP.	DESCRIPTION	JOB NO.
Stone				Williams	28 Sept. 77	US # 20	Fair	20-19 N. 76	65°	References to Control Points	

39A

02#50B

FD. PK Nail 85' ±  
 N. of Int Co. Rd. 13'  
 462.62' N. of PK. Nail  
 (last reference)  
 11.8' to W. edge put.  
 12.3' to E. edge put.

