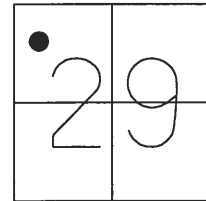


O.D.O.T. DISTRICT 2 SURVEY OFFICE (USE ONLY)

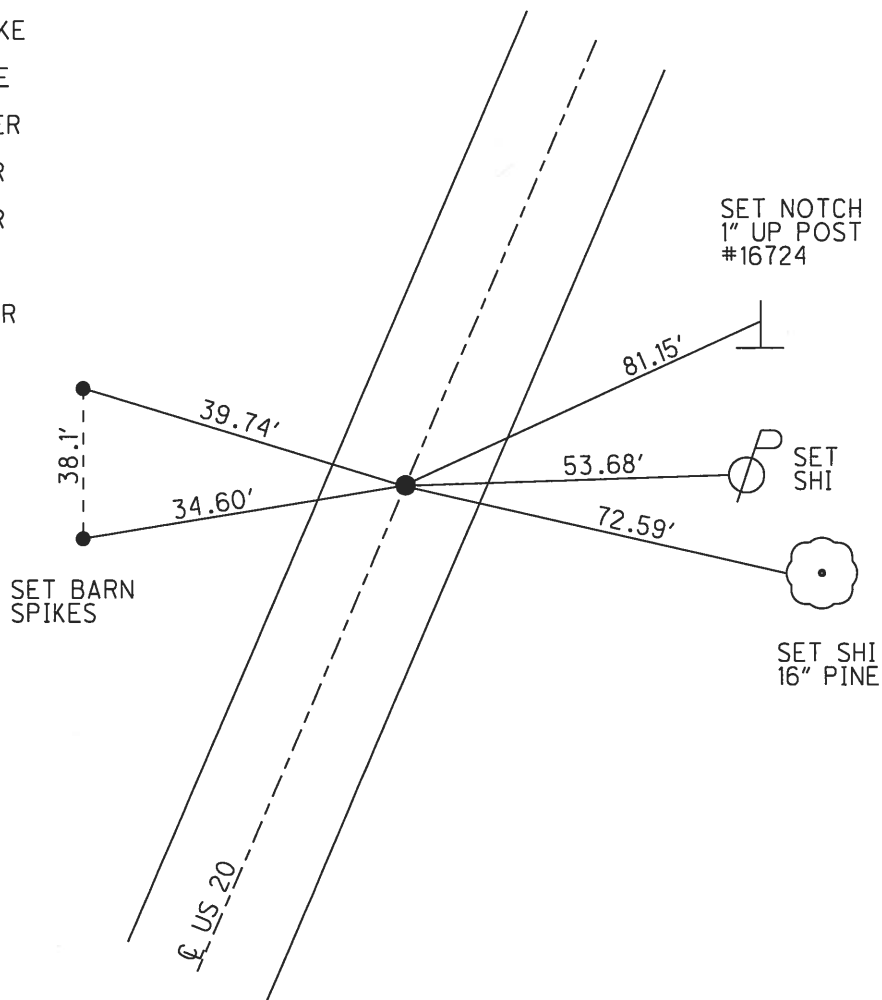
PERSONNEL \_\_\_\_\_ REFERENCE NO. 40 SHEET 7 OF 24  
 NOTES POORE DATE 7-25-17 ROUTE US 20  
 H.C. LEU WEATHER SUNNY COUNTY WILLIAMS  
 R.C. CARSON TEMP. 70° F TOWNSHIP MADISON  
 \_\_\_\_\_ HOMAN \_\_\_\_\_ SECTION 29  
 \_\_\_\_\_ T 9 S R 2 W

TYPE MONUMENT P.K./WASHER  
~~ON SURFACE~~ - BELOW 1 1/2"  
 LEFT - ☉ PAV'T - ~~RIGHT~~ 0.8'  
11.4' TO RT EDGE PAVEMENT  
 S.L.M. 703+64.95



Grid: Northing: 733372.137 Easting: 1402886.771

RECORD: P.C.  
 SET SM.R.R.SPIKE  
 8-31-88, IRS  
 FD SM.R.R.SPIKE  
 5/6/98, SAH  
 SET P.K./WASHER  
 11-12-98, BVD  
 FD P.K./WASHER  
 7/21/05, MB  
 FD P.K./WASHER  
 1 1/2"  
 REF40  
 5/24/16, DCH  
 SET MAG/WASHER  
 NEWREF40  
 9-29-2017, JLL



# O.D.O.T. DISTRICT 2 SURVEY OFFICE

PERSONNEL

REFERENCE NO. 40

SHEET 7 OF 16

NOTES S. Huss

H.C. B. Danson

R.C. B. Cordes

DATE 5-6-98

WEATHER Pt Cl'dy - Fair

TEMP. +70°

ROUTE US-20

COUNTY Williams

TOWNSHIP Bridgewater

SECTION 29

T9 S R 2 W

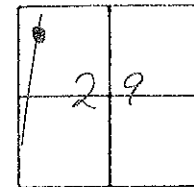
TYPE MONUMENT SMALL RR. SPK.

(ON SURFACE) - ~~BELOW~~ YES

~~LEFT~~ ~~PAV'TY~~ ~~RIGHT~~ 1.2' Lt.

10.8' TO Lt. EDGE PAVEMENT

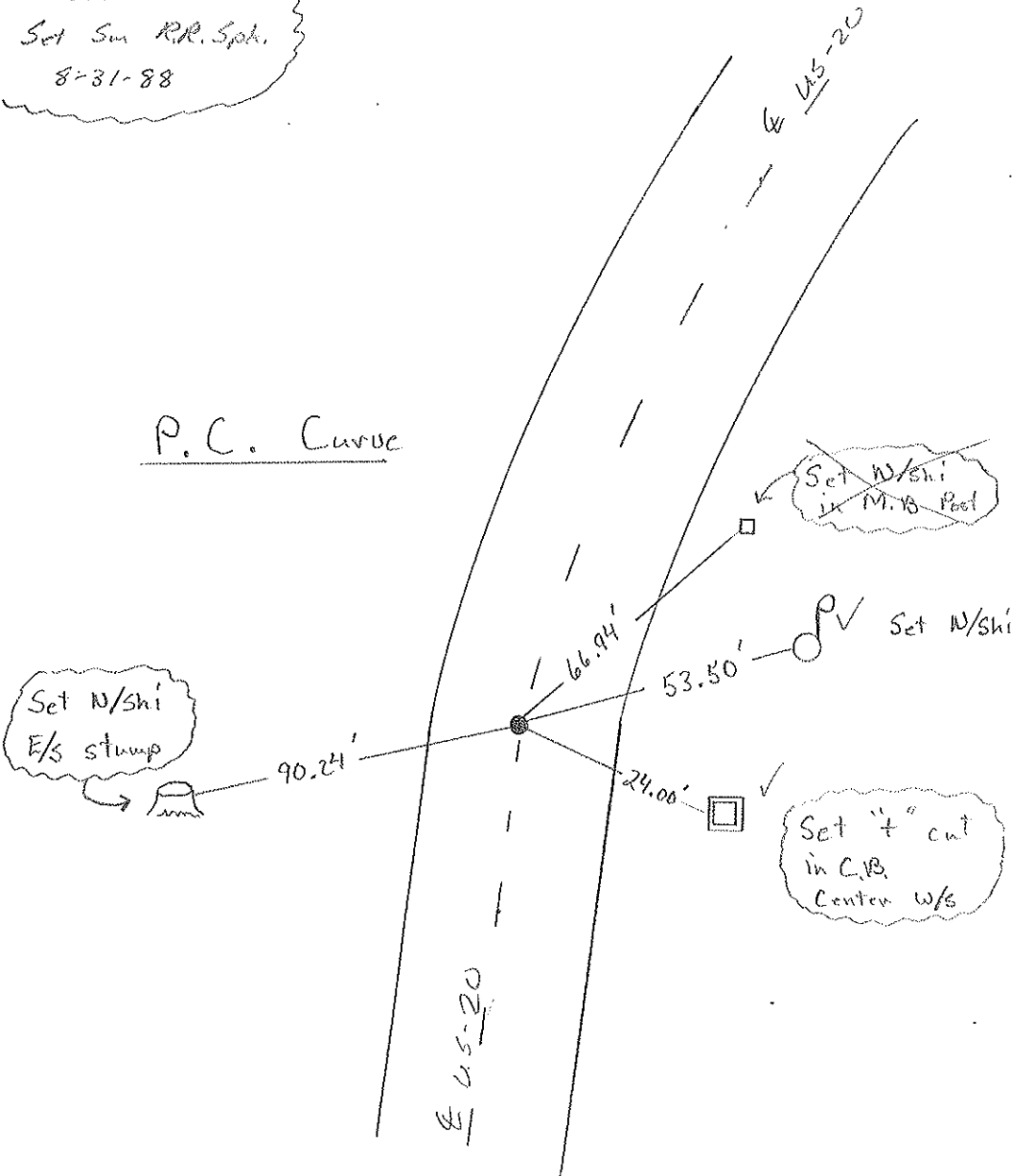
S.L.M. 202+76 701+65



Record:  
Set Sm RR. Spk.  
8-31-88

Set PK/W BUD  
11-12-98

P.C. Curve

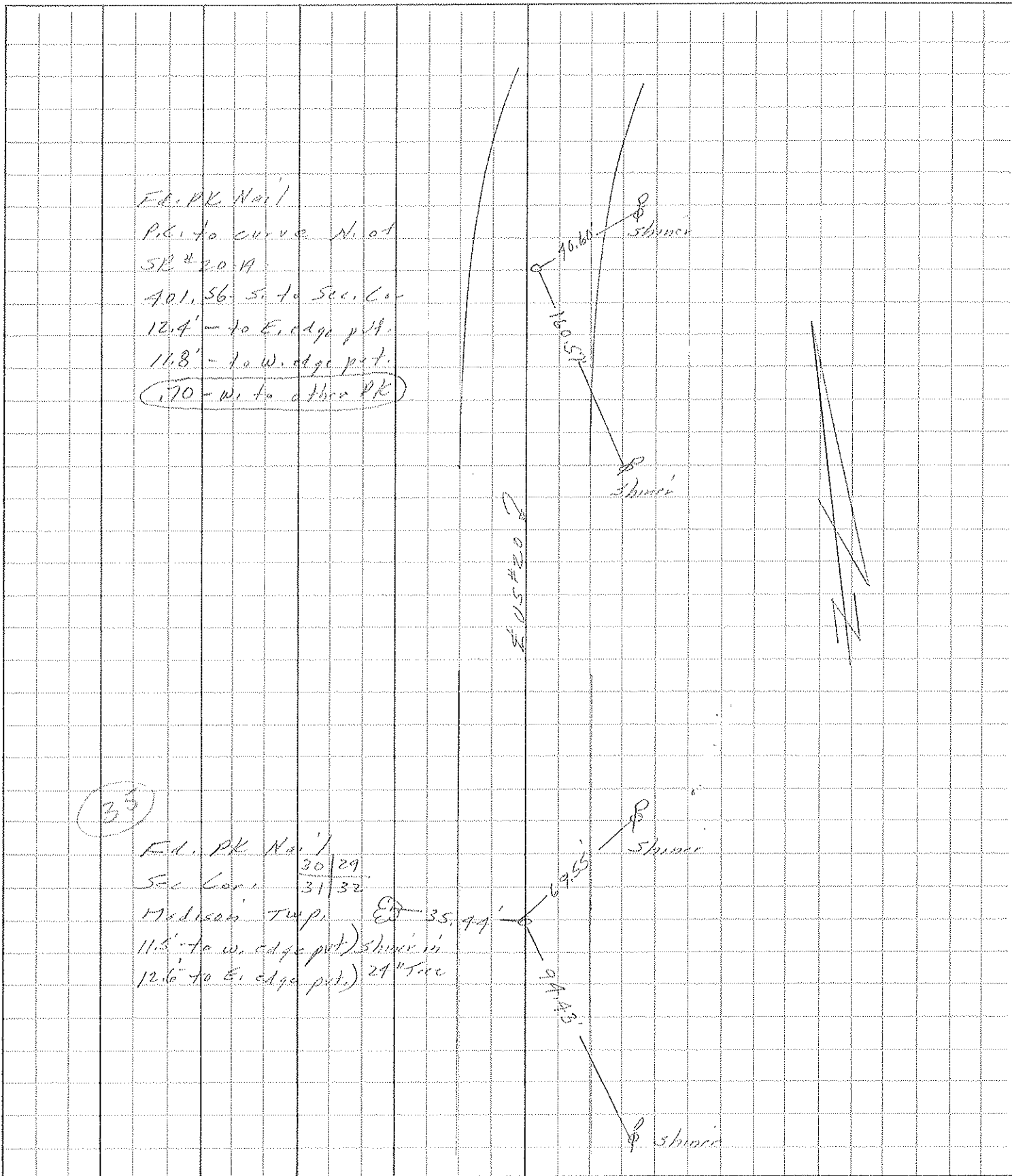


Preventive Maintenance  
Smooth Seal 2005  
Exist. Point Uncovered  
Date 7/21/05 M.B.

PERSONNEL	TITLE	PERSONNEL	TITLE
<i>Styne</i>			
<i>S</i>			
<i>Crund</i>			

COUNTY Williams DATE 28 Sept. 77  
 S. R. US # 20 WEATHER Fair  
 SEC. SR # 20-4 North TEMP. 65°

DESCRIPTION References to Control Points JOB NO. \_\_\_\_\_  
 LEFT CENTER LINE RIGHT

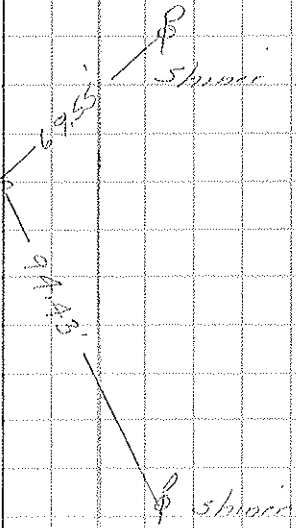
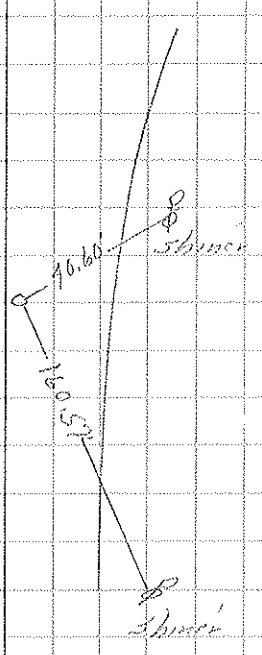


Ed. PK Nail  
 P.C. to curve N. of  
 SR # 20-4  
 401.56 S. to Sec. Cor.  
 12.4' - to E. edge p.t.  
 14.8' - to W. edge p.t.  
 (170 - W. to other PK)

(33)

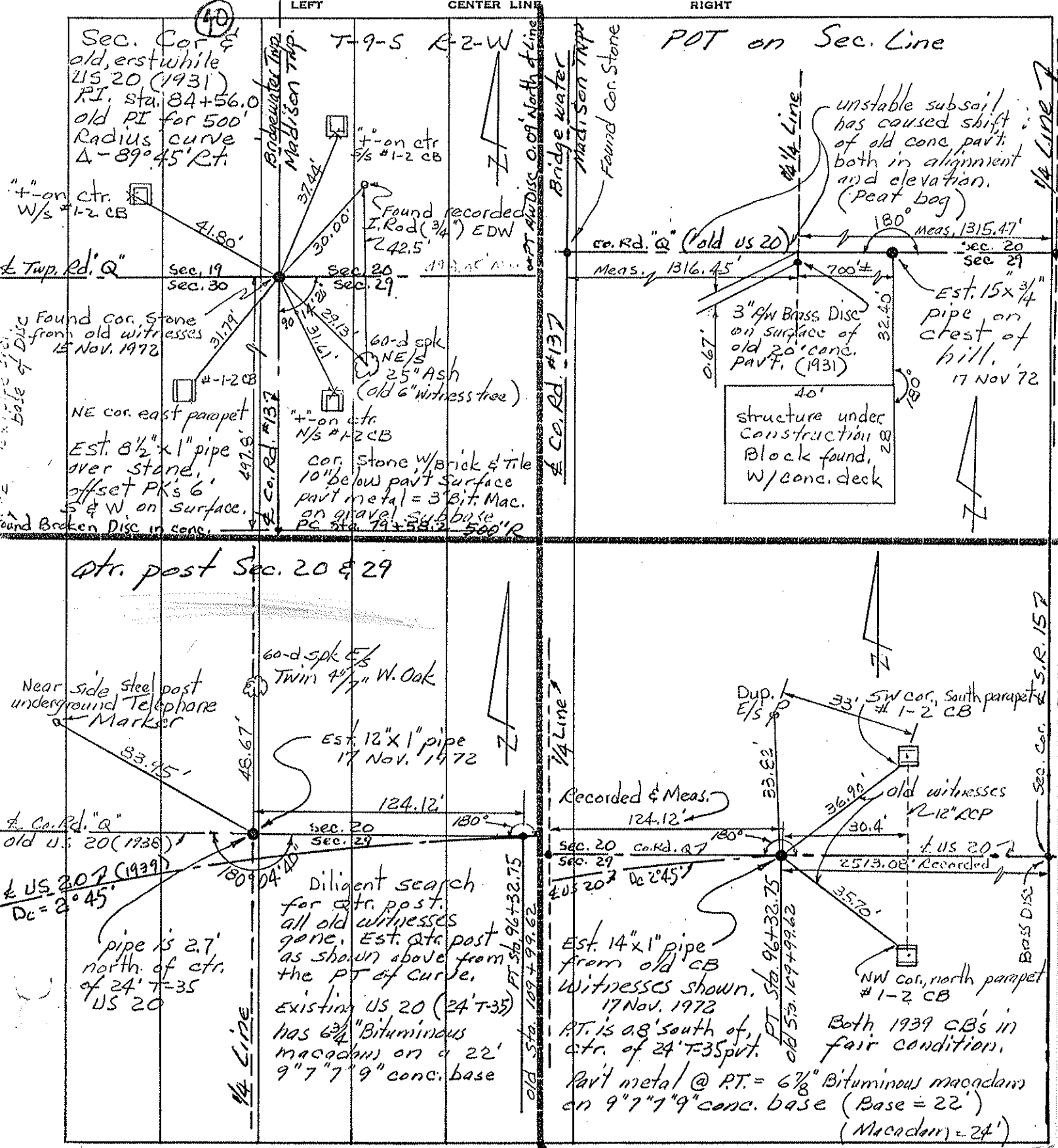
Ed. PK Nail  
 30 | 29  
 Sec. Cor. 31 | 32  
 Medison Twp. Ed 35.44  
 11.5' - to W. edge p.t.) Shiner in  
 12.6' - to E. edge p.t.) 24" Tree

SR # 20-4



PERSONNEL	TITLE	PERSONNEL	TITLE	COUNTY	DATE	WEATHER	TEMP.
Red Beach				Williams	Nov '72		
Newcomb				US 20			
Knape				Madison Twp.			

DESCRIPTION **CONTROL POINTS** JOB NO. \_\_\_\_\_



Found recorded I. Rod (3/4") EDW 242.5

Found cor. Stone from old witnesses 15 Nov. 1972

NE cor. east parapet Est. 8 1/2" x 1" pipe over stone, offset PK's 6' S & W on surface. Found Broken Disc in conc.

60-d spk NE 1/4 25" Ash (old 6" witness tree)

cor. Stone w/ Brick & Tile 10" below pavt surface pavt metal = 3" Bit. Mac. on gravel subbase PC Sta. 79+58.2 500' R

unstable subsail has caused shift of old conc pavt both in alignment and elevation. (peat bag)

Est. 15 x 3/4" pipe on crest of hill. 17 Nov 72

3" 9/16 Brass Disc on surface of old 20" conc. Pavt. (1931)

structure under construction Block found, w/ conc. deck

Near side steel post underground Telephone Marker

Est. 12" x 1" pipe 17 Nov. 1972

Diligent search for ctr. post. all old witnesses gone. Est. ctr. post as shown above from the PT of curve. existing US 20 (24' T-35) has 6 3/4" Bituminous macadam on a 22' 9" x 7" x 9" conc. base

Recorded & Meas. 124.12'

Est. 14" x 1" pipe from old CB Witnesses shown. 17 Nov. 1972

PT. is 08' south of ctr. of 24' T-35 pvt. Pavt metal @ PT. = 6 3/8" Bituminous macadam on 9" x 7" x 9" conc. base (Base = 22') (Macadam = 24')