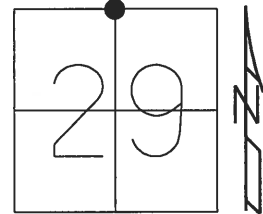


O.D.O.T. DISTRICT 2 SURVEY OFFICE (USE ONLY)

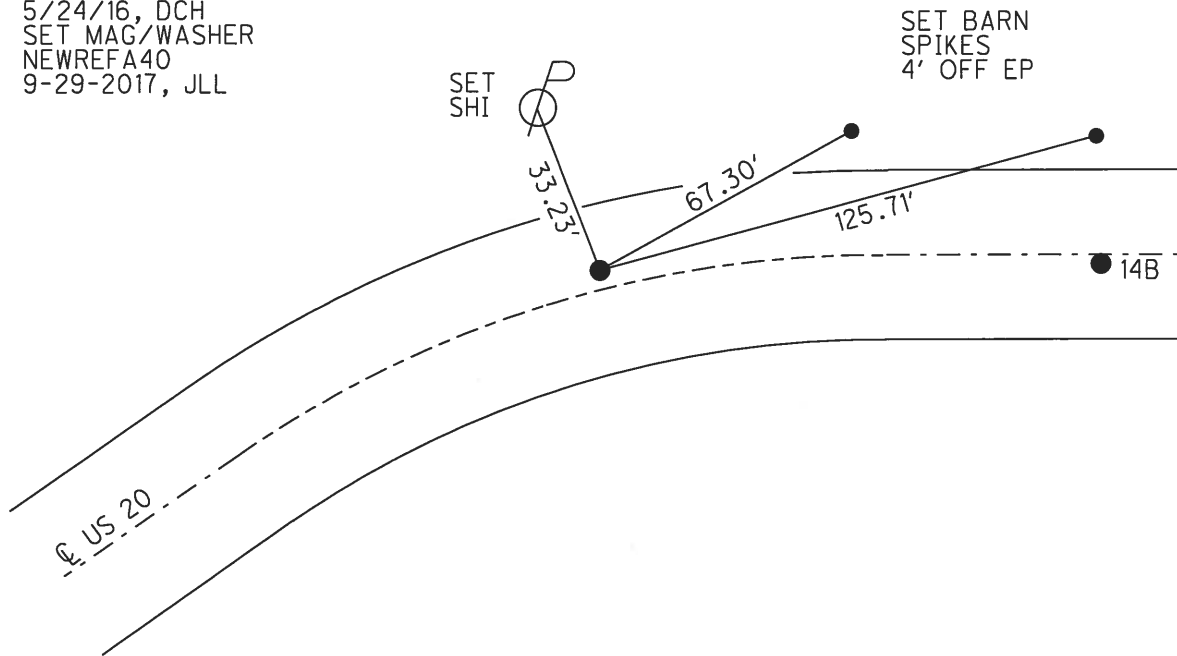
PERSONNEL	REFERENCE NO.	40 A	SHEET	8	OF	24
NOTES	POORE	DATE	7-25-17	ROUTE	US 20	
H.C.	LEU	WEATHER	SUNNY	COUNTY	WILLIAMS	
R.C.	CARSON	TEMP.	70° F	TOWNSHIP	MADISON	
	HOMAN			SECTION	29	
				T	9	S
				R	2	W

TYPE MONUMENT P.K./WASHER
~~ON SURFACE~~ - BELOW 1 1/2"
 LEFT - Q PAV'T - ~~RIGHT~~ 2.3'
9.8' TO LT EDGE PAVEMENT
 S.L.M. 730+25.50
 Grid: Northing: 734923.554 Easting: 1404827.783



DIST. 40A-40B= 124.11

RECORD:
 SET SM.R.R.SPIKE
 8-31-88, IRS
 FD SM.R.R.SPIKE
 8/25/98, SAH
 SET P.K./WASHER
 11-12-98, BVD
 FD P.K./WASHER
 7/21/05, MB
 FD P.K./WASHER
 1 1/2" DOWN
 REFA40
 5/24/16, DCH
 SET MAG/WASHER
 NEWREFA40
 9-29-2017, JLL



O.D.O.T. DISTRICT 2 SURVEY OFFICE

PERSONNEL

NOTES Huss
 H.C. Moser
 R.C. Van Dusen
 Flag Helm

REFERENCE NO. 40-A
40-B

DATE 8-25-98
 WEATHER Pt. Cloudy - Humid
 TEMP. +82 °F

SHEET 8 OF 16

ROUTE US-20
 COUNTY Williams
 TOWNSHIP Madison
 SECTION 29
T9 S R 2 W

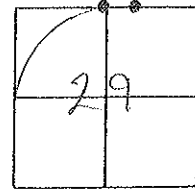
TYPE MONUMENT SMALL RR. SPK

ON SURFACE - BELOW YES

LEFT - ℄ PAV'T. - RIGHT A - 2.3' Lt, B - 0.8' Rt.

A - 98 TO Lt. EDGE PAVEMENT, B - 11.5' to Rt. EOP

S.L.M. A = 729+51, B = 763+56

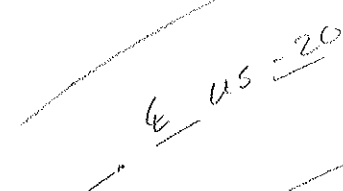


Set Sm. RR. Spk. A = 728+25
 8-31-88 Both 2.3' LT ℄
RRS

B = 729+49
 0.2' RT ℄

Set PK/W BUD
 11-12-98

Sec 20
 Sec 29



Preventive Maintenance
 Smooth Seal 2005
 Exist. Point Uncovered
 Date 7/21/05 M.B.

