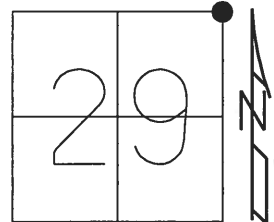


O.D.O.T. DISTRICT 2 SURVEY OFFICE (USE ONLY)

PERSONNEL \_\_\_\_\_ REFERENCE NO. 41 SHEET 10 OF 24

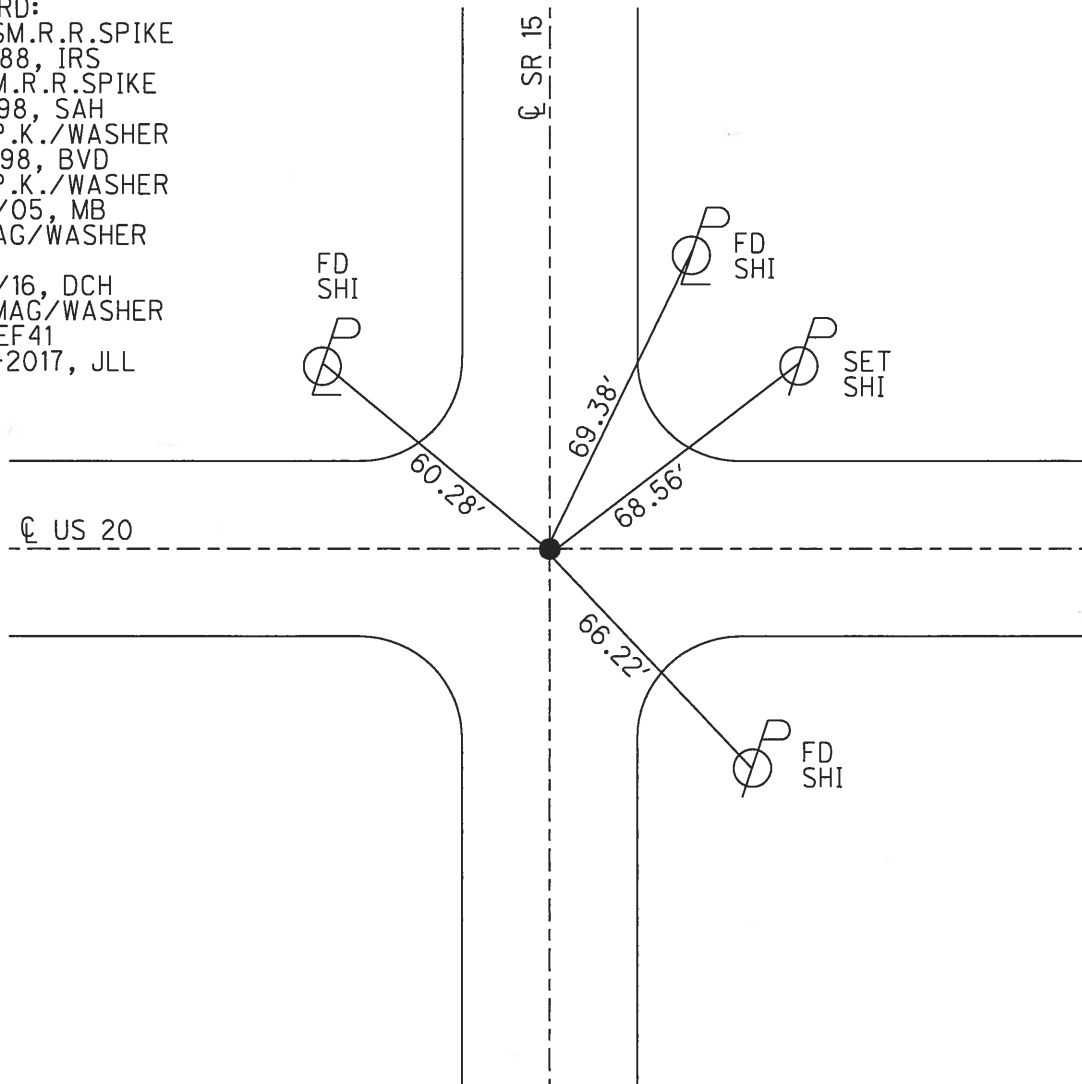
NOTES POORE DATE 7-25-17 ROUTE US 20  
 H.C. LEU WEATHER SUNNY COUNTY WILLIAMS  
 R.C. CARSON TEMP. 75° F TOWNSHIP MADISON  
 \_\_\_\_\_ SECTION 29  
 \_\_\_\_\_ T 9 S R 2 W

TYPE MONUMENT MAG/WASHER  
 ON SURFACE - BELOW ON  
 LEFT - ☉ PAV'T - RIGHT ON  
 \_\_\_\_\_ TO \_\_\_\_\_ EDGE PAVEMENT  
 S.L.M. 756+62.40



Grid: Northing: 734860.1998 Easting: 1407464.063

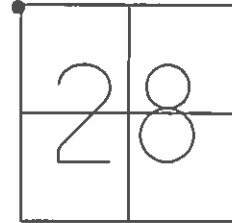
RECORD:  
 SET SM.R.R.SPIKE  
 8-31-88, IRS  
 FD SM.R.R.SPIKE  
 5/6/98, SAH  
 SET P.K./WASHER  
 11-12-98, BVD  
 SET P.K./WASHER  
 7/22/05, MB  
 FD MAG/WASHER  
 REF41  
 5/24/16, DCH  
 SET MAG/WASHER  
 NEWREF41  
 9-29-2017, JLL



O.D.O.T. DISTRICT 2 SURVEY OFFICE (USE ONLY)

PERSONNEL \_\_\_\_\_ REFERENCE NO. 12 SHEET 14 OF 39  
 NOTES NUHFER \_\_\_\_\_ DATE 5/30/07 ROUTE SR 15  
 H.C. HUSS WEATHER SUNNY COUNTY WILLIAMS  
 R.C. HOUESHELL TEMP. 92° TOWNSHIP MADISON  
 \_\_\_\_\_ SECTION 28  
 \_\_\_\_\_ T 9 S R 2 W

TYPE MONUMENT P.K./WASHER  
 ON SURFACE - ~~BELOW~~ ON \_\_\_\_\_  
~~LEFT~~ - ☉ PAV'T - RIGHT 1' WEST  
 - TO - EDGE PAVEMENT  
 S.L.M. 134+00



GRID: NORTHING: 734860.287 EASTING: 1407464.101

FD PK/WASHER  
 5/13/82, CL  
 SET MAG/WASHER  
 8-29-07 RGN

NOTE: SR 15  
 $\Delta = 0^{\circ}16.1' LT$   
 FD BOAT SPIKE  
 ATOP 3/4" IPIPE  
 ATOP BRASS R/W DISK  
 5/13/82, CL  
 ALL ANGLES MEASURED  
 FROM PERTINENT QTR.  
 POSTS BY RED BEACH, 1972

FD. N/S  
 SE-SIDE

60.28'

69.41' FD. N/S  
 SW-SIDE

☉ US 20

77.88'

66.21'

BOTTOM 5TH.  
 BRICK UP  
 NE.COR. PORCH

FD. N/S  
 N-SIDE

76.36'

FD. N/S  
 NW-SIDE

☉ SR 15

See Wil 15 For New TIES

# O.D.O.T. DISTRICT 2 SURVEY OFFICE

PERSONNEL

REFERENCE NO. 41

SHEET 9 OF 16

NOTES R. Hues

H.C. VanDusen

R.C. Cordes

DATE 5-6-98

WEATHER Pt. Cldy - Fair

TEMP. 160°F

ROUTE US-20

COUNTY Williams

TOWNSHIP Madison

SECTION 20-21-28-29

T 9 S R 2 W

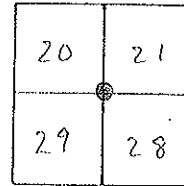
TYPE MONUMENT SMALL R.R. SPK.

ON SURFACE - ~~BELOW~~ YES

~~TO~~ EQ PAV'T. - ~~RIGHT~~ YES

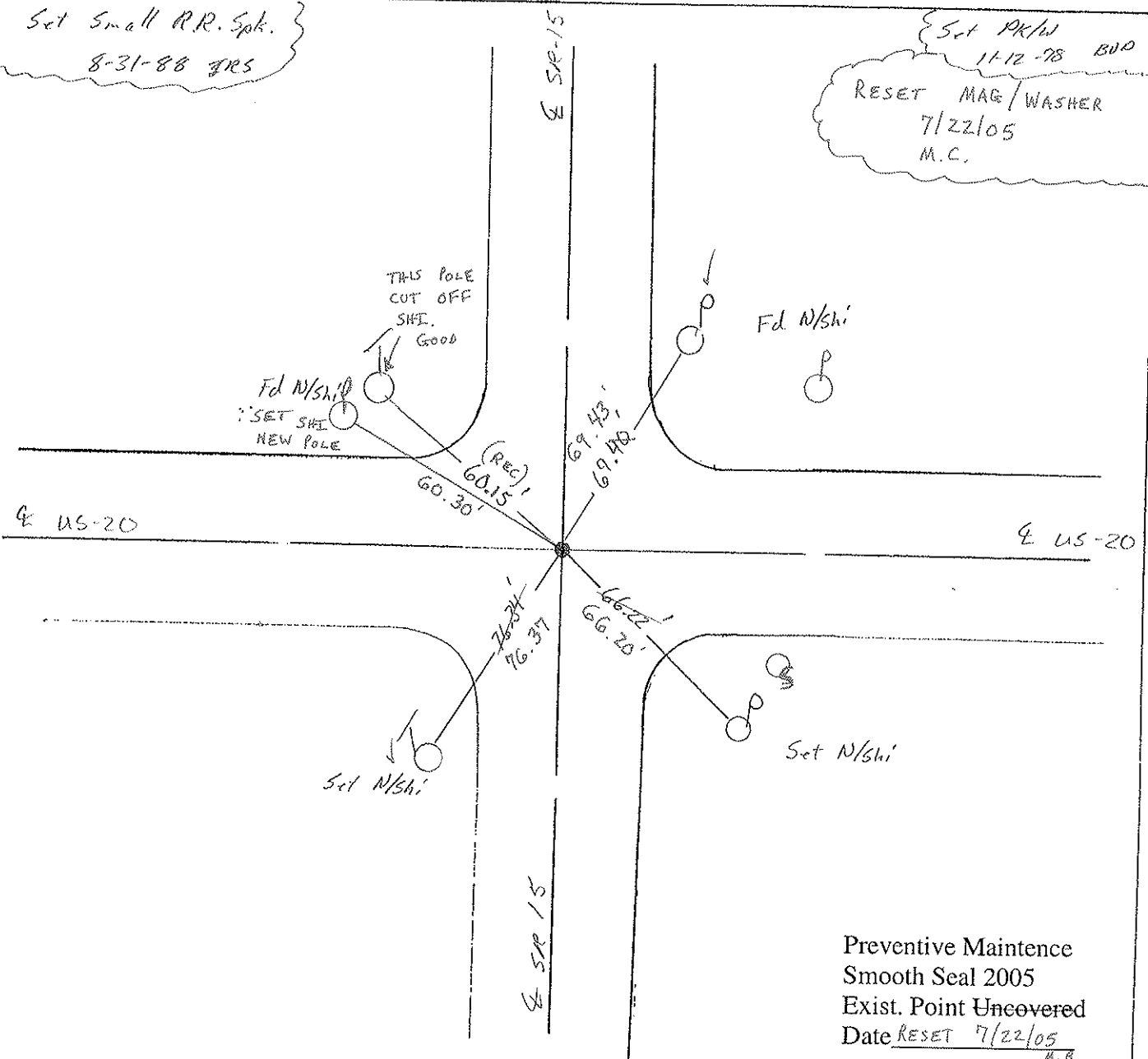
TO EDGE PAVEMENT

S.L.M. 756701 754 + 66



Set Small R.R. Spk.  
8-31-88 JRS

Set PK/W  
11-12-78 BJD  
RESET MAG/WASHER  
7/22/05  
M.C.



Preventive Maintenance  
Smooth Seal 2005  
Exist. Point Uncovered  
Date RESET 7/22/05  
H.B.