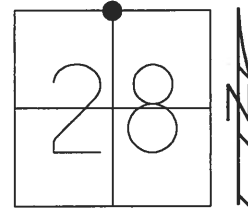


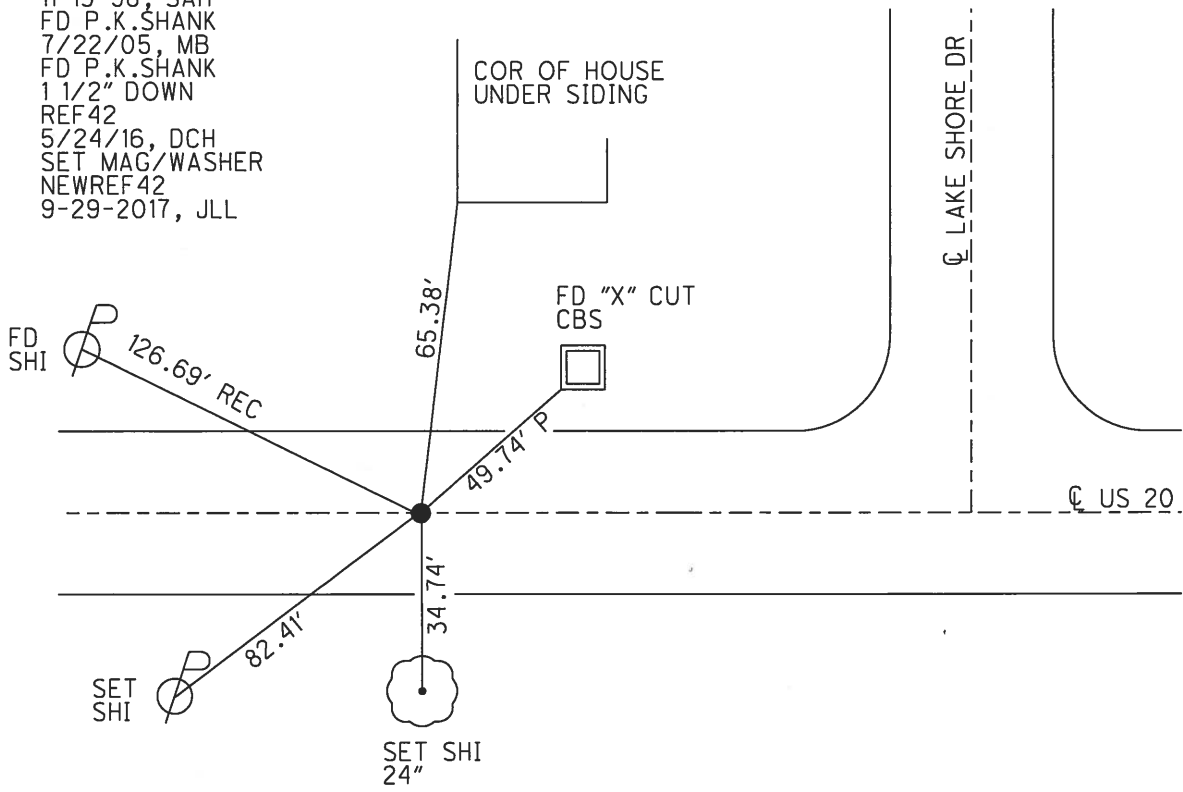
O.D.O.T. DISTRICT 2 SURVEY OFFICE (USE ONLY)

PERSONNEL	REFERENCE NO.	<u>42</u>	SHEET	<u>11</u>	OF	<u>24</u>
NOTES	POORE	DATE	<u>8-03-17</u>	ROUTE	<u>US 20</u>	
H.C.	<u>LEU</u>	WEATHER	<u>SUNNY</u>	COUNTY	<u>WILLIAMS</u>	
R.C.	<u>CARSON</u>	TEMP.	<u>75° F</u>	TOWNSHIP	<u>MADISON</u>	
	<u>HOMAN</u>			SECTION	<u>28</u>	
				T	<u>9</u>	R
				S		W

TYPE MONUMENT P.K.SHANK
~~ON SURFACE~~ - BELOW 1 1/2"
 LEFT - ☉ PAV'T - RIGHT ON
12.3' TO LT EDGE PAVEMENT
 S.L.M. 783+18.4
 Grid: Northing: 734811.739 Easting: 1410120.051



RECORD:
 1929 PLAN
 $\Delta = 0^\circ 03' \text{ LT (R)}$
 $\Delta = 0^\circ 02' 09" \text{ LT (M)}$
 SET SM.R.R.SPIKE
 8-31-88, IRS
 FD SM.R.R.SPIKE
 5/6/98, SAH
 SET P.K./WASHER
 11-13-98, SAH
 FD P.K.SHANK
 7/22/05, MB
 FD P.K.SHANK
 1 1/2" DOWN
 REF42
 5/24/16, DCH
 SET MAG/WASHER
 NEWREF42
 9-29-2017, JLL



O.D.O.T. DISTRICT 2 SURVEY OFFICE

PERSONNEL _____

REFERENCE NO. 42

SHEET 10 OF 16

NOTES Aug

H.C. VanDusen

R.C. Cordes

DATE 5-6-98

WEATHER Pt. Cldy - Fair

TEMP. +62°F

ROUTE US-20

COUNTY Williams

TOWNSHIP Madison

SECTION 28

T 9 S R 2 W

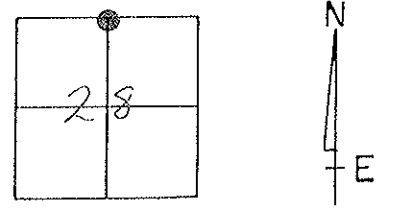
TYPE MONUMENT SMALL RR. SPK.

ON SURFACE - ~~BELOW~~ YES

~~PAV'T~~ - PAV'T - ~~RIGHT~~ YES

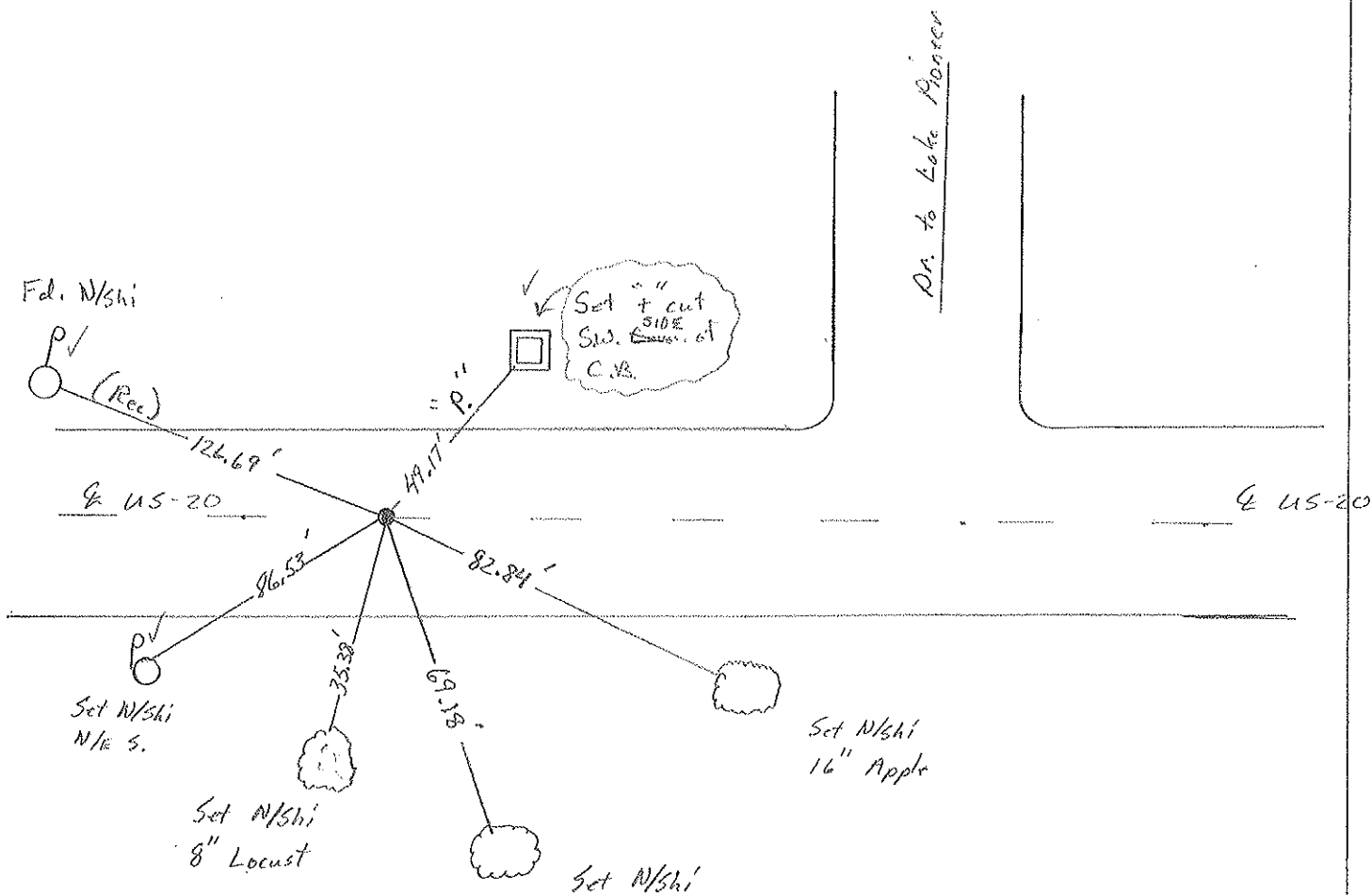
12.3 TO LT. EDGE PAVEMENT

S.L.M. 782+69 781+23



Rec. Set Sm. RR. Spk
8-31-88 JRS

Set PKW
11-13-98 SAM



NOTE: NAIL HEAD/WASHER
POPPED OFF - SHANK IS
GOOD

Preventive Maintenance
Smooth Seal 2005
Exist. Point Uncovered
Date 7/22/05 M.B.