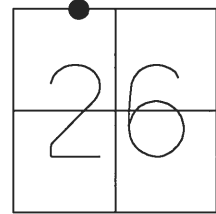


**O.D.O.T. DISTRICT 2 SURVEY OFFICE (USE ONLY)**

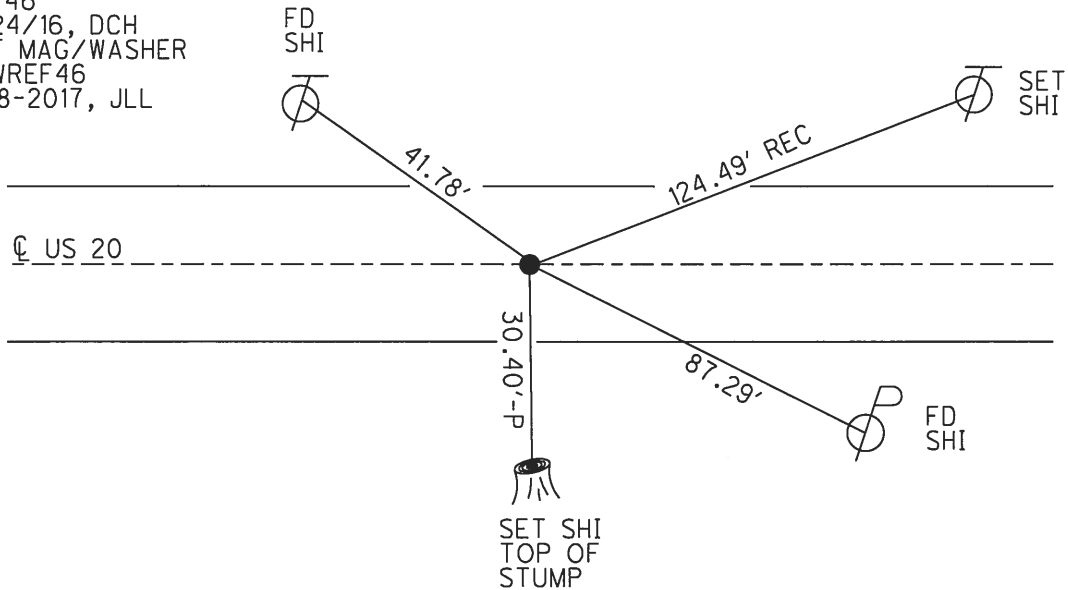
PERSONNEL	REFERENCE NO.	46	SHEET	16	OF	24
NOTES	POORE	DATE	8-03-17	ROUTE	US 20	
H.C.	LEU	WEATHER	SUNNY	COUNTY	WILLIAMS	
R.C.	CARSON	TEMP.	80° F	TOWNSHIP	MADISON	
	HOMAN			SECTION	26	
				T 9 S	R 2 W	

TYPE MONUMENT SM.R.R.SPIKE  
~~ON SURFACE~~ - BELOW 1 1/2"  
~~LEFT~~ - CL PAV'T - RIGHT 0.4'  
11.8' TO RT EDGE PAVEMENT  
 S.L.M. 882+13.38



Grid: Northing: 734640.281 Easting: 1420013.121

RECORD:  
 1929 PLAN  
 STA. 125+50.5  
 SET SM.R.R.SPIKE  
 8-31-88, IRS  
 FD SM.R.R.SPIKE  
 5/6/98, SAH  
 SET P.K./WASHER  
 11-13-98, SAH  
 FD P.K./WASHER  
 7/28/05, MB  
 FD SM.R.R.SPIKE  
 1 1/2" DOWN  
 REF46  
 5/24/16, DCH  
 SET MAG/WASHER  
 NEWREF46  
 9-18-2017, JLL



# O.D.O.T. DISTRICT 2 SURVEY OFFICE

PERSONNEL \_\_\_\_\_

REFERENCE NO. 46

SHEET 15 OF 16

NOTES Huss

H.C. VanDusen

R.C. Cordes

DATE 5-6-98

WEATHER Pt Cldy-Fair

TEMP. +62°F

ROUTE US-20

COUNTY Williams

TOWNSHIP Madison

SECTION 26

T 9 S R 2 W

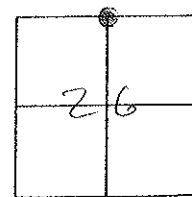
TYPE MONUMENT SMALL RR. SPK.

ON SURFACE - ~~BELOW~~ YES

~~LEFT~~ - (C. PAV'T) - RIGHT YES

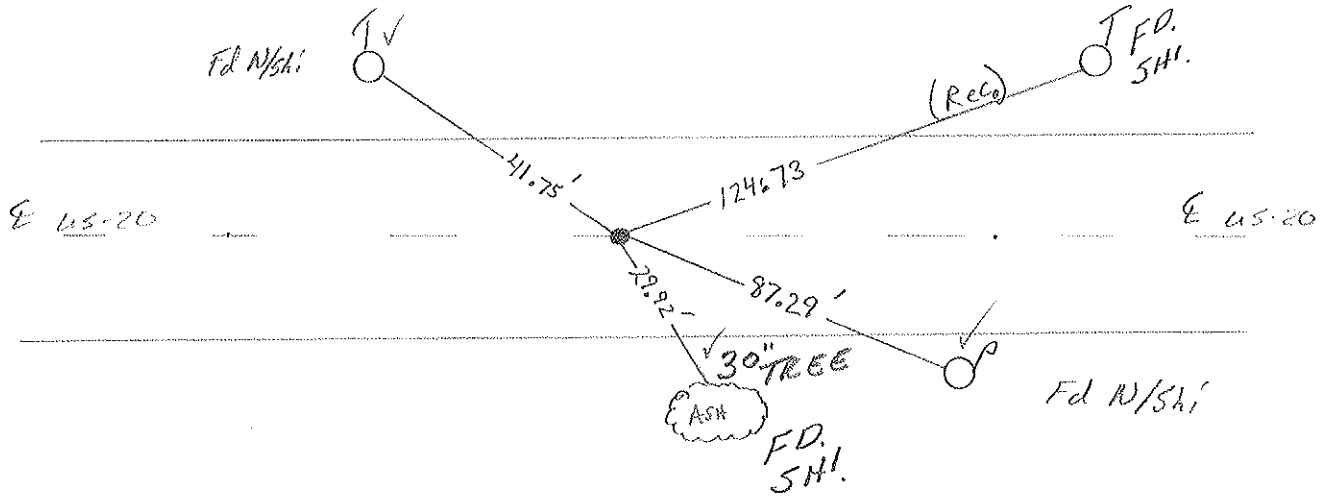
11.8' TO RT. EDGE PAVEMENT

S.L.M. 88+18 880 + 28



*Set Small RR Spk  
8-31-88 JRS*

*Set PK/W  
11-13-98 SAM*



Preventive Maintenance  
Smooth Seal 2005  
Exist. Point Uncovered  
Date 7/28/05 M.B.