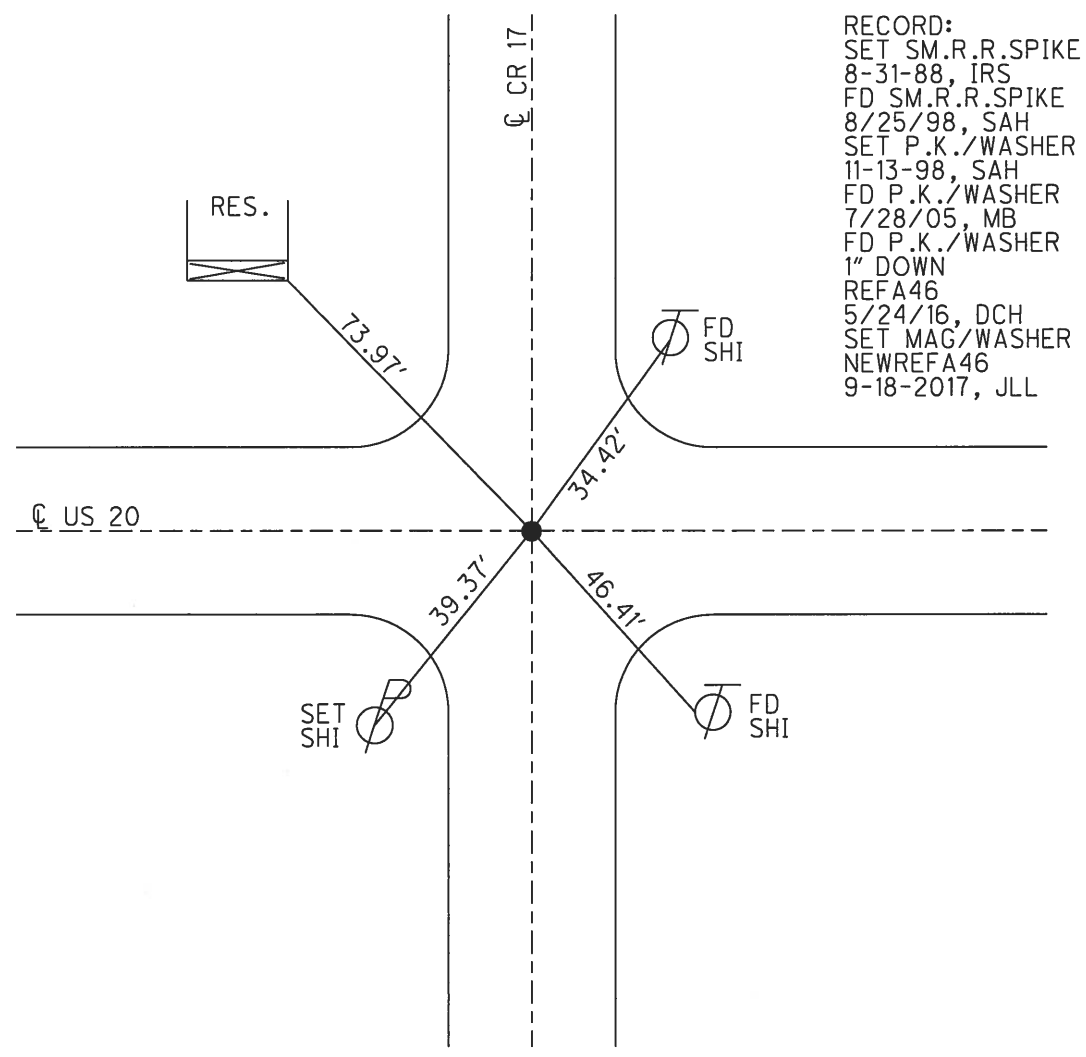
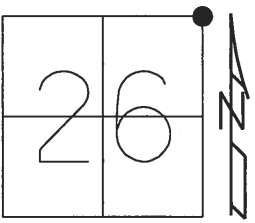


O.D.O.T. DISTRICT 2 SURVEY OFFICE (USE ONLY)

PERSONNEL	REFERENCE NO.	46 A	SHEET	17	OF	24
NOTES	POORE	DATE	8-03-17	ROUTE	US 20	
H.C.	LEU	WEATHER	SUNNY	COUNTY	WILLIAMS	
R.C.	CARSON	TEMP.	80° F	TOWNSHIP	MADISON	
	HOMAN			SECTION	26	
				T	9	S
				R	2	W

TYPE MONUMENT P.K./WASHER
~~ON SURFACE~~ - BELOW 1"
 LEFT - CL PAV'T - ~~RIGHT~~ 0.2'
12.3' TO RT EDGE PAVEMENT
 S.L.M. 914+66.81
 Grid: Northing: 734594.837 Easting: 1423266.211



RECORD:
 SET SM.R.R.SPIKE
 8-31-88, IRS
 FD SM.R.R.SPIKE
 8/25/98, SAH
 SET P.K./WASHER
 11-13-98, SAH
 FD P.K./WASHER
 7/28/05, MB
 FD P.K./WASHER
 1" DOWN
 REFA46
 5/24/16, DCH
 SET MAG/WASHER
 NEWREFA46
 9-18-2017, JLL

O.D.O.T. DISTRICT 2 SURVEY OFFICE

PERSONNEL _____

REFERENCE NO. 46-A SHEET 16 OF 16

NOTES Huss

H.C. Moser

R.C. Helms

Hubs Van Dusen

DATE 9-25-98

WEATHER Cldy-Humid

TEMP. +82°F

ROUTE US-20

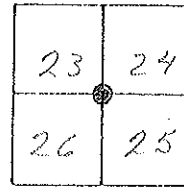
COUNTY Williams

TOWNSHIP Madison

SECTION 23-24-25-26

T 9 S R 2 W

TYPE MONUMENT SMALL RR SPK.



ON SURFACE - ~~BELOW~~ YES

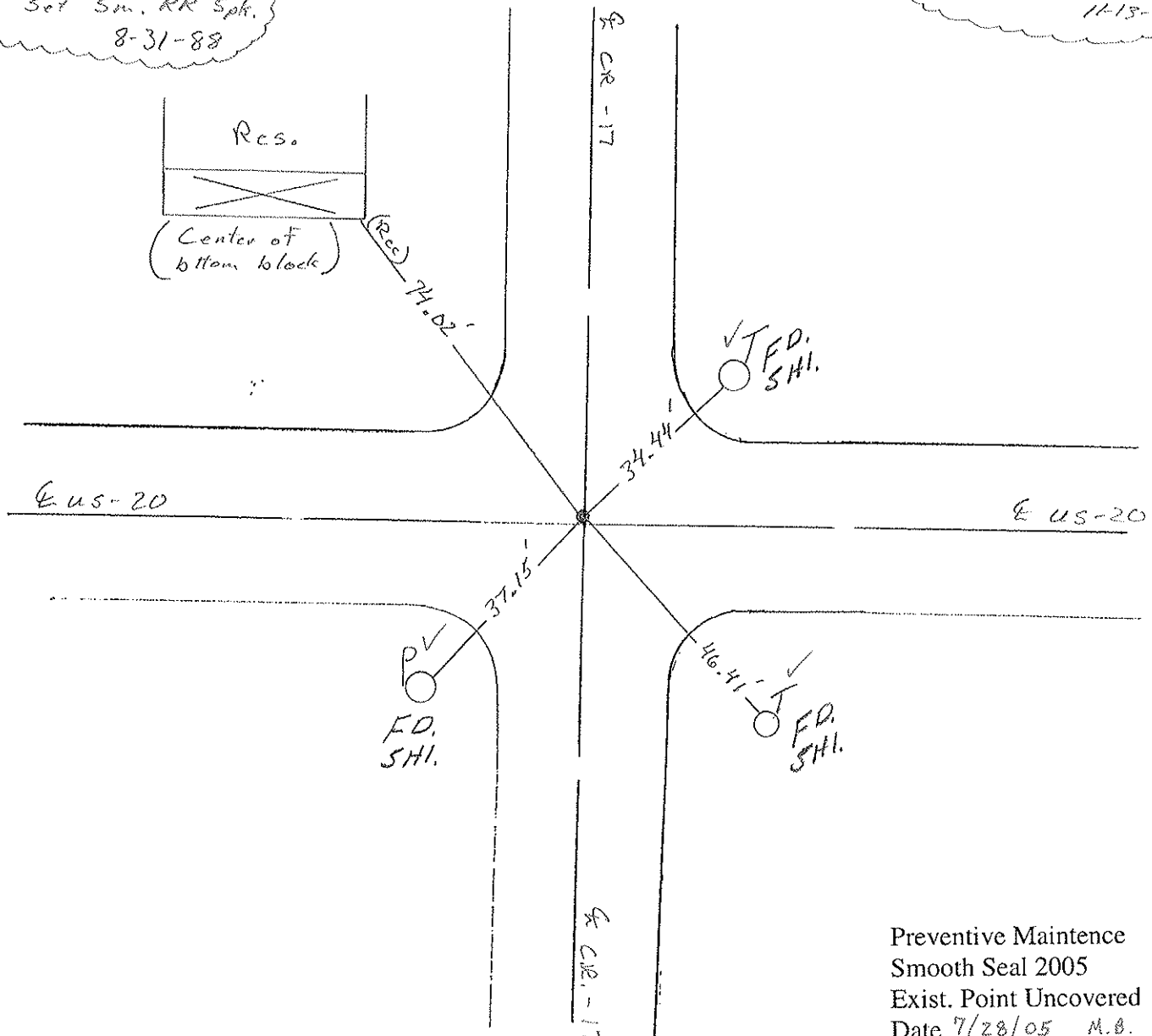
LEFT - ~~PAV'T~~ RIGHT .7 Lt.

TO EDGE PAVEMENT

S.L.M. 894+45 912+84

Record: IRS
Set Sm. RR Spk.
8-31-88

Set P&W SHH
11-13-98



Preventive Maintenance
Smooth Seal 2005
Exist. Point Uncovered
Date 7/28/05 M.B.