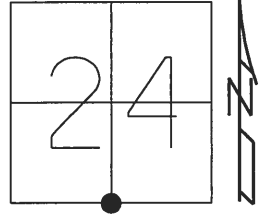


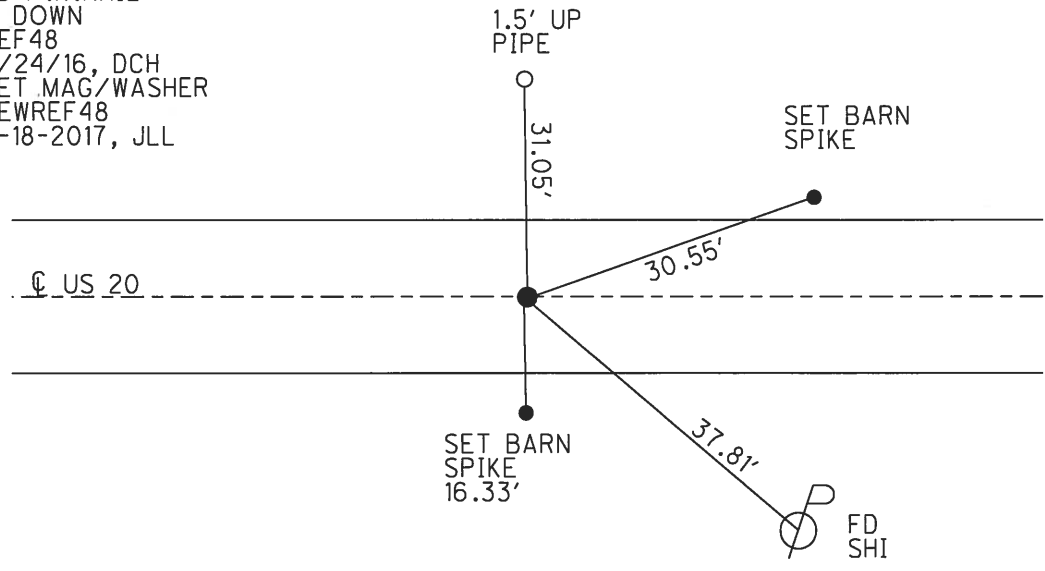
O.D.O.T. DISTRICT 2 SURVEY OFFICE (USE ONLY)

PERSONNEL \_\_\_\_\_ REFERENCE NO. 48 SHEET 18 OF 24  
 NOTES POORE DATE 8-3-17 ROUTE US 20  
 H.C. LEU WEATHER SUNNY COUNTY WILLIAMS  
 R.C. CARSON TEMP. 80° F TOWNSHIP MADISON  
 \_\_\_\_\_ HOMAN \_\_\_\_\_ SECTION 24  
 \_\_\_\_\_ T 9 S R 2 W

TYPE MONUMENT P.K.NAIL  
~~ON SURFACE~~ - BELOW 1"  
 LEFT - ☉ PAV'T - RIGHT ON  
12.3' TO RT EDGE PAVEMENT  
 S.L.M. 941+45.75  
 Grid: Northing: 734517.558 Easting: 1425944.064



RECORD:  
 FD 1" IPIPE  
 3" DOWN  
 5/20/97, CL  
 SET P.K./WASHER  
 8/7/97, SAH  
 FD P.K./WASHER  
 7/28/05, MB  
 FD P.K.NAIL  
 1" DOWN  
 REF48  
 5/24/16, DCH  
 SET MAG/WASHER  
 NEWREF48  
 9-18-2017, JLL



# O.D.O.T. DISTRICT 2 SURVEY OFFICE

PERSONNEL \_\_\_\_\_

REFERENCE NO. 48

SHEET 2 OF 17

NOTES LOEHRKE

H.C. CORDAS DJ

R.C. COX

DATE 5-20-97

WEATHER cloudy

TEMP. 60°F

ROUTE U.S. #20

COUNTY Williams

TOWNSHIP Madison

SECTION 24

T 9 S R 2 W

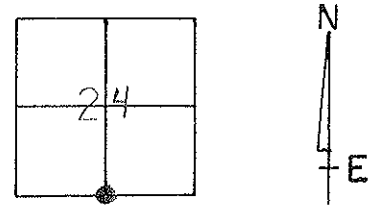
TYPE MONUMENT 1" IRON PIPE

~~ON~~ SURFACE - BELOW 3"

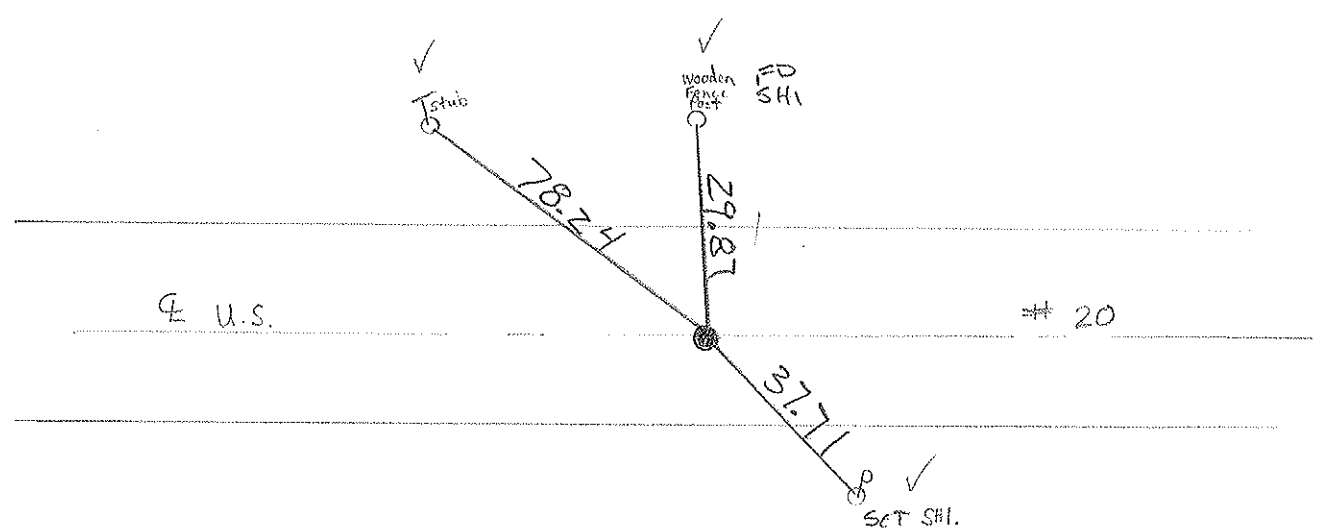
~~LEFT~~ - & PAV'T. - ~~RIGHT~~ YES

12.3 TO LT EDGE PAVEMENT

S.L.M. 940+38 939+66



*Set PK/W  
8-7-97 SAH*



Preventive Maintenance  
Smooth Seal 2005  
Exist. Point Uncovered  
Date 7/28/05 M.B.