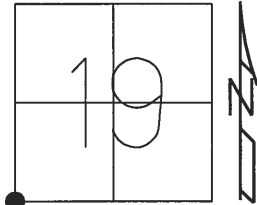


O.D.O.T. DISTRICT 2 SURVEY OFFICE (USE ONLY)

PERSONNEL	REFERENCE NO.	49 A	SHEET	20	OF	24
NOTES	POORE	DATE	8-03-17	ROUTE	US 20	
H.C.	LEU	WEATHER	SUNNY	COUNTY	WILLIAMS	
R.C.	CARSON	TEMP.	82° F	TOWNSHIP	MILLCREEK	
	HOMAN			SECTION	19	
				T	9	S
				R	2	W

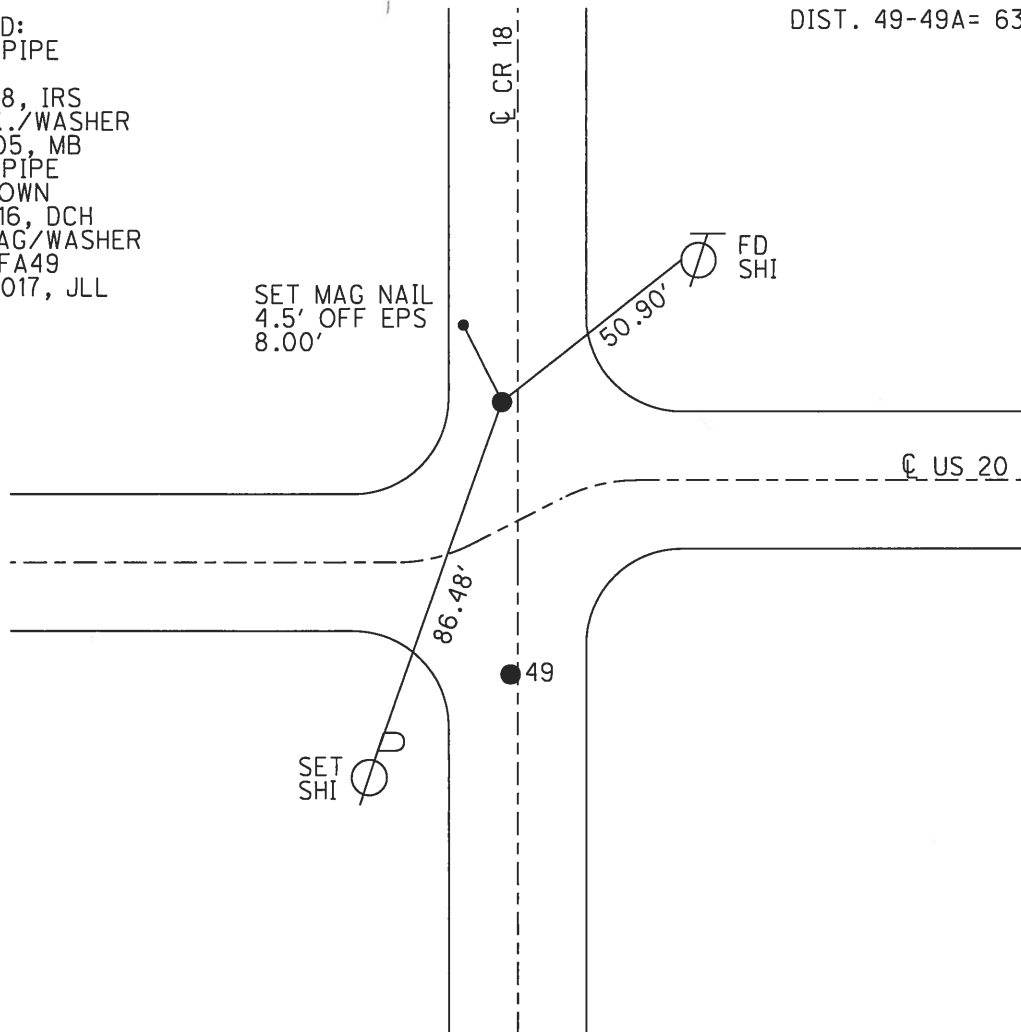
TYPE MONUMENT 1" IPIPE
~~ON SURFACE~~ - BELOW 1/2"
 LEFT - ☉ PAV'T - ~~RIGHT~~ 32.4'
12.3' TO RT EDGE PAVEMENT
 S.L.M. 968+40.06



Grid: Northing: 734506.247 Easting: 1428633.748

RECORD:
 FD 1" IPIPE
 BELOW
 8-31-88, IRS
 FD P.K./WASHER
 7-28-05, MB
 FD 1" IPIPE
 1/2" DOWN
 5/24/16, DCH
 SET MAG/WASHER
 NEWREFA49
 9-18-2017, JLL

DIST. 49-49A= 63.92'



O.D.O.T. DISTRICT 2 SURVEY OFFICE

PERSONNEL _____

REFERENCE NO. 49

SHEET 3 OF 17

NOTES CANTERBURY

H.C. " "

R.C. MIKLOVIC

DATE 7-28-05

WEATHER FAIR

TEMP. +82°

ROUTE U.S. # 20

COUNTY WILLIAMS

TOWNSHIP MADISON
MILLCREEK

SECTION 19

T 9 S R 2 W

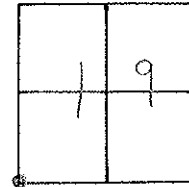
TYPE MONUMENT P.K. + WASHERS @ BOTH

ON SURFACE - BELOW SURFACE

LEFT - CL PAV'T. - RIGHT A=32.8' LT 9, 3' W. 9 N.

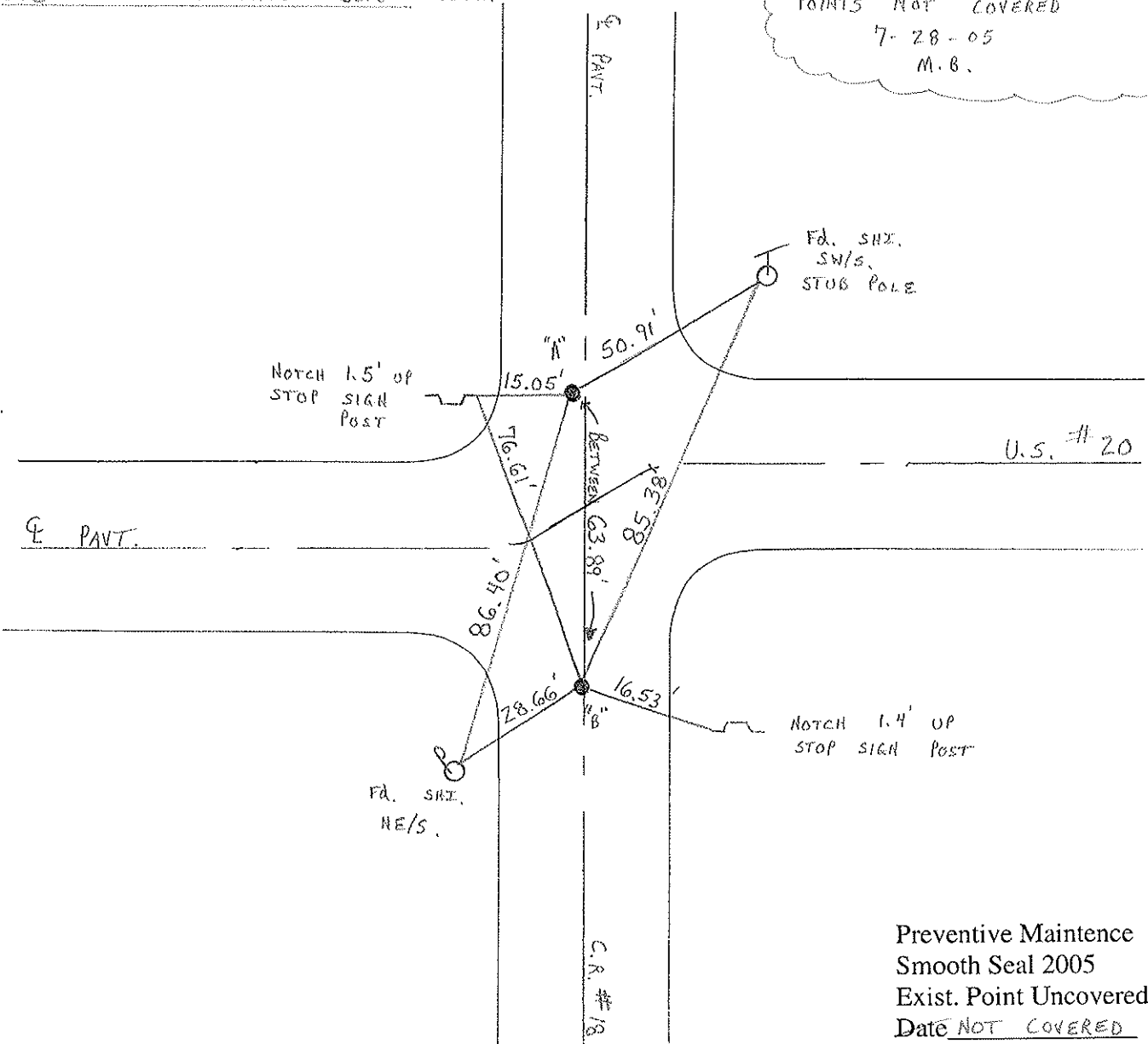
TO EDGE PAVEMENT B=31.2' RT 9, ON 9 S.

S.L.M. A=966+60 B=966+60



NOTE: 1" IRON PIPES BELOW BOTH.

POINTS NOT COVERED
7-28-05
M.B.



Preventive Maintenance
Smooth Seal 2005
Exist. Point Uncovered
Date NOT COVERED