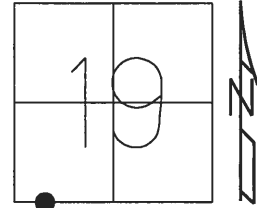


O.D.O.T. DISTRICT 2 SURVEY OFFICE (USE ONLY)

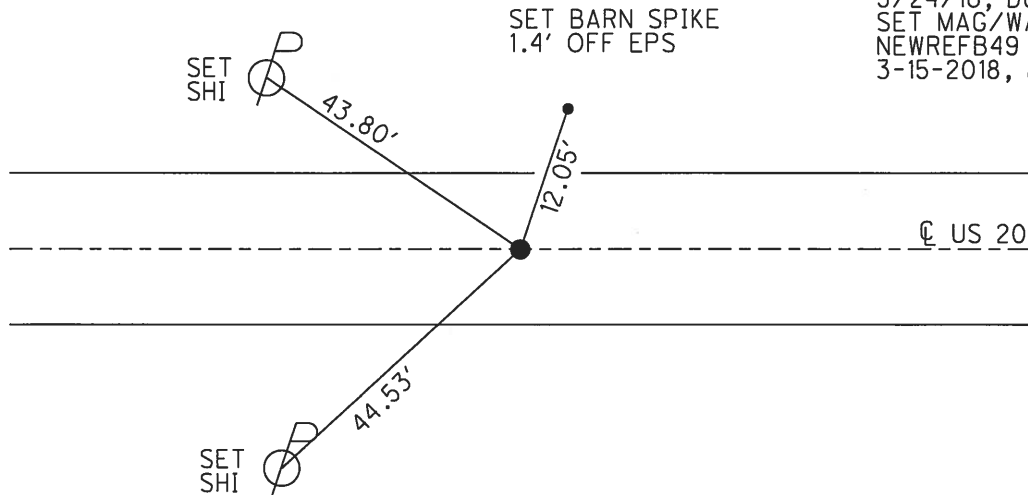
PERSONNEL _____ REFERENCE NO. 49 B SHEET 21 OF 24
 NOTES POORE DATE 8-03-17 ROUTE US 20
 H.C. LEU WEATHER SUNNY COUNTY WILLIAMS
 R.C. CARSON TEMP. 80° F TOWNSHIP MILLCREEK
 _____ HOMAN _____ SECTION 19
 _____ T 9 S R 1 W

TYPE MONUMENT P.K./WASHER
~~ON SURFACE~~ - BELOW 1"
 LEFT - ☉ PAV'T - ~~RIGHT~~ 5.3'
7.7' TO LT EDGE PAVEMENT
 S.L.M. 971+23.36

Grid: Northing: 734499.563 Easting: 1428918.859



RECORD: P.I.
 $\Delta = 6^{\circ} 29' 12''$ RT
 285.19' EAST OF
 SW COR. SEC 19
 FD IPIPE
 4" DOWN
 5/20/97, CL
 SET P.K./WASHER
 8-7-97, SAH
 FD P.K./WASHER
 7/28/05, MB
 FD P.K./WASHER
 1" DOWN
 REFB49
 5/24/16, DCH
 SET MAG/WASHER
 NEWREFB49
 3-15-2018, JLL



O.D.O.T. DISTRICT 2 SURVEY OFFICE

PERSONNEL _____

REFERENCE NO. 49-A

SHEET 4 OF 17

NOTES LOCHERKE

H.C. CORDES M

R.C. COX

DATE 5-20-97

WEATHER cloudy

TEMP. +60°F

ROUTE U.S. #20

COUNTY Williams

TOWNSHIP Millerack

SECTION 19

T 9 S R 1 W

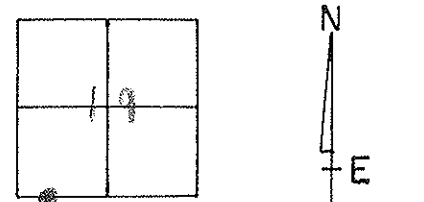
TYPE MONUMENT I PIPE

~~ON SURFACE~~ - BELOW 4"

LEFT - ~~PAV'T - RIGHT~~ 4.7 LT

7.7 TO LT EDGE PAVEMENT

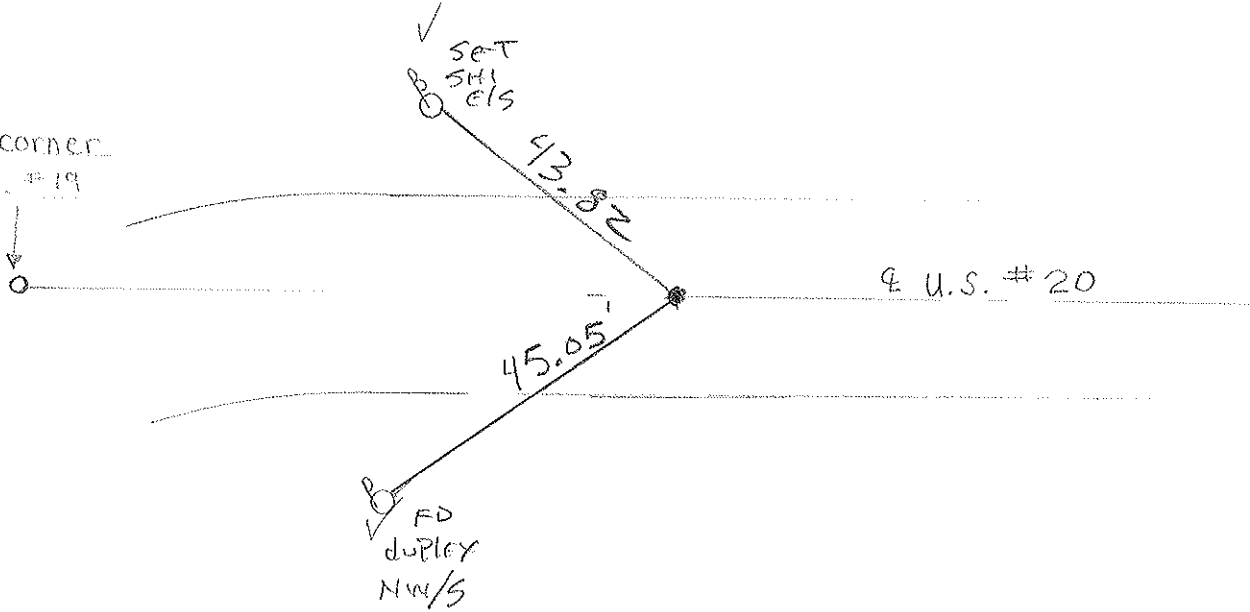
S.L.M. 970+24 969+46



Record
285.19' East of
SW Corner Sec. #19

SET PK/WASHER
8-7-97 SAM

SW corner
Sec. #19



P.I. of curve
 $A = 6^{\circ} 29' 12''$ Rt.

Preventive Maintenance
Smooth Seal 2005
Exist. Point Uncovered
Date 7/28/05 M.B.