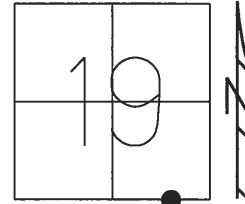


O.D.O.T. DISTRICT 2 SURVEY OFFICE (USE ONLY)

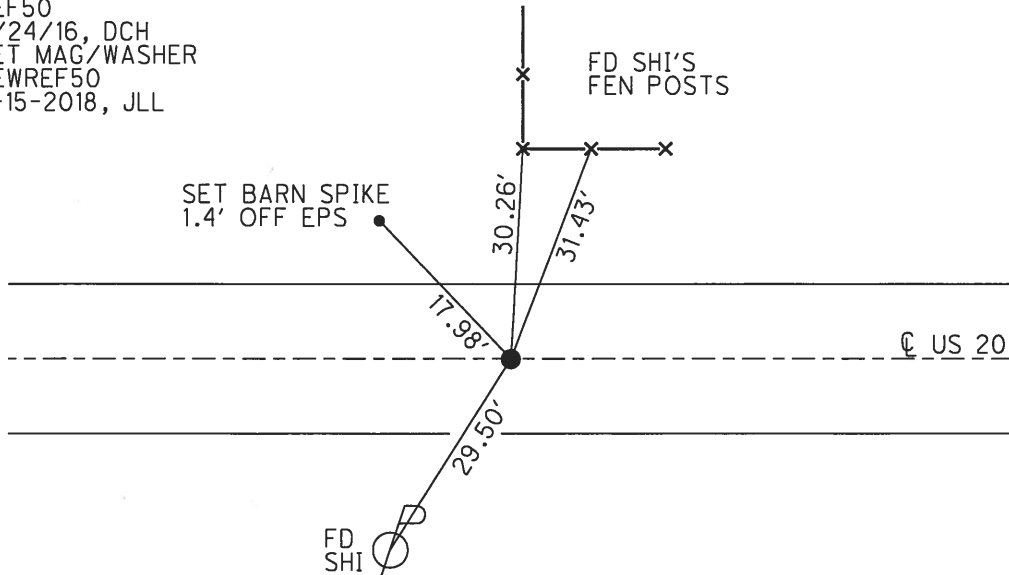
PERSONNEL _____ REFERENCE NO. 50 SHEET 22 OF 24
 NOTES POORE DATE 8-3-17 ROUTE US 20
 H.C. LEU WEATHER SUNNY COUNTY WILLIAMS
 R.C. CARSON TEMP. 81° F TOWNSHIP MILLCREEK
 _____ HOMAN _____ SECTION 19
 T 9 S R 1 W

TYPE MONUMENT P.K./WASHER
~~ON SURFACE~~ - BELOW 1 1/2"
 LEFT - CL PAV'T - RIGHT 0.7'
12.3' TO RT EDGE PAVEMENT
 S.L.M. 1007+34.90



Grid: Northing: 734415.137 Easting: 1432529.482

RECORD:
 FD PIPE
 5" DOWN
 5/20/97, CL
 SET P.K./WASHER
 8-7-97, SAH
 FD P.K./WASHER
 7/28/05, MB
 FD P.K./WASHER
 1 1/2" DOWN
 REF50
 5/24/16, DCH
 SET MAG/WASHER
 NEWREF50
 3-15-2018, JLL



O.D.O.T. DISTRICT 2 SURVEY OFFICE

PERSONNEL _____

REFERENCE NO. 50

SHEET 5 OF 17

NOTES LOEWEKE

H.C. CORDES W

R.C. COX

DATE 5-20-97

WEATHER CLOUDY

TEMP. +60°F

ROUTE U.S. #20

COUNTY Williams

TOWNSHIP Millcreek

SECTION 19

T 9 S R 1 W

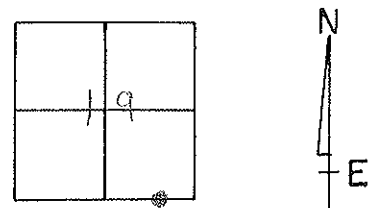
TYPE MONUMENT I PIPE

~~ON SURFACE~~ - BELOW 5"

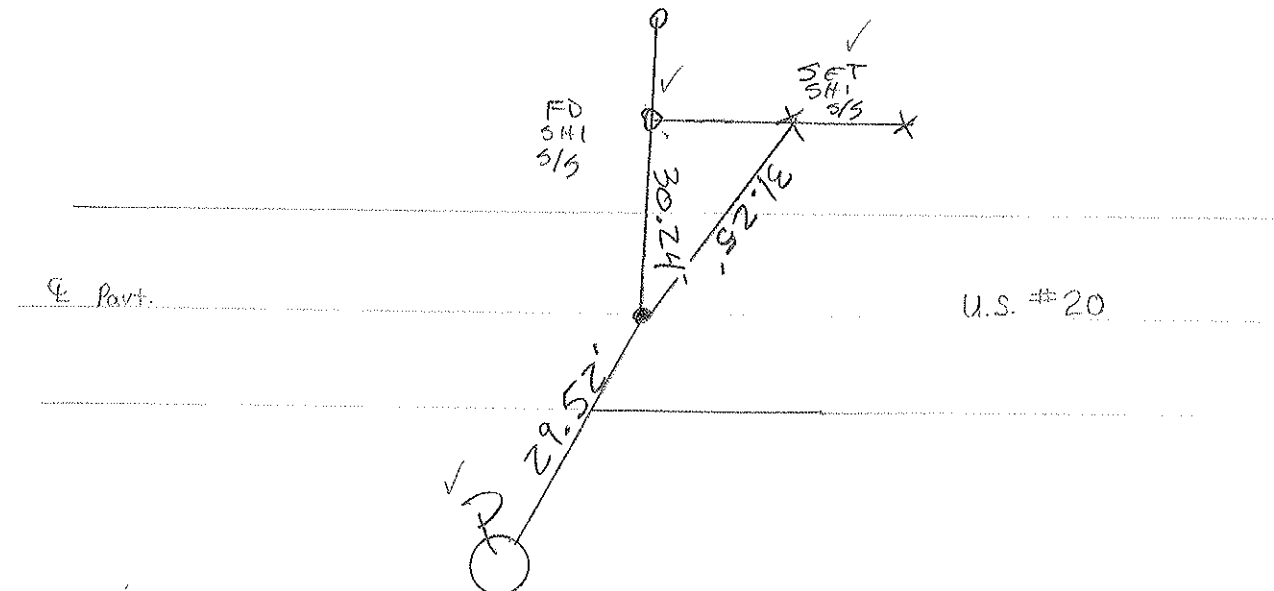
LEFT-~~PAV'T.~~ - ~~RIGHT~~ 0.5 FT

10.4' TO LT EDGE PAVEMENT

S.L.M. 1006 + 44 1005 + 61



*SET PK/COMSHER
8-7-97 SAH*



Preventive Maintenance
Smooth Seal 2005
Exist. Point Uncovered
Date 7/28/05 M.B.