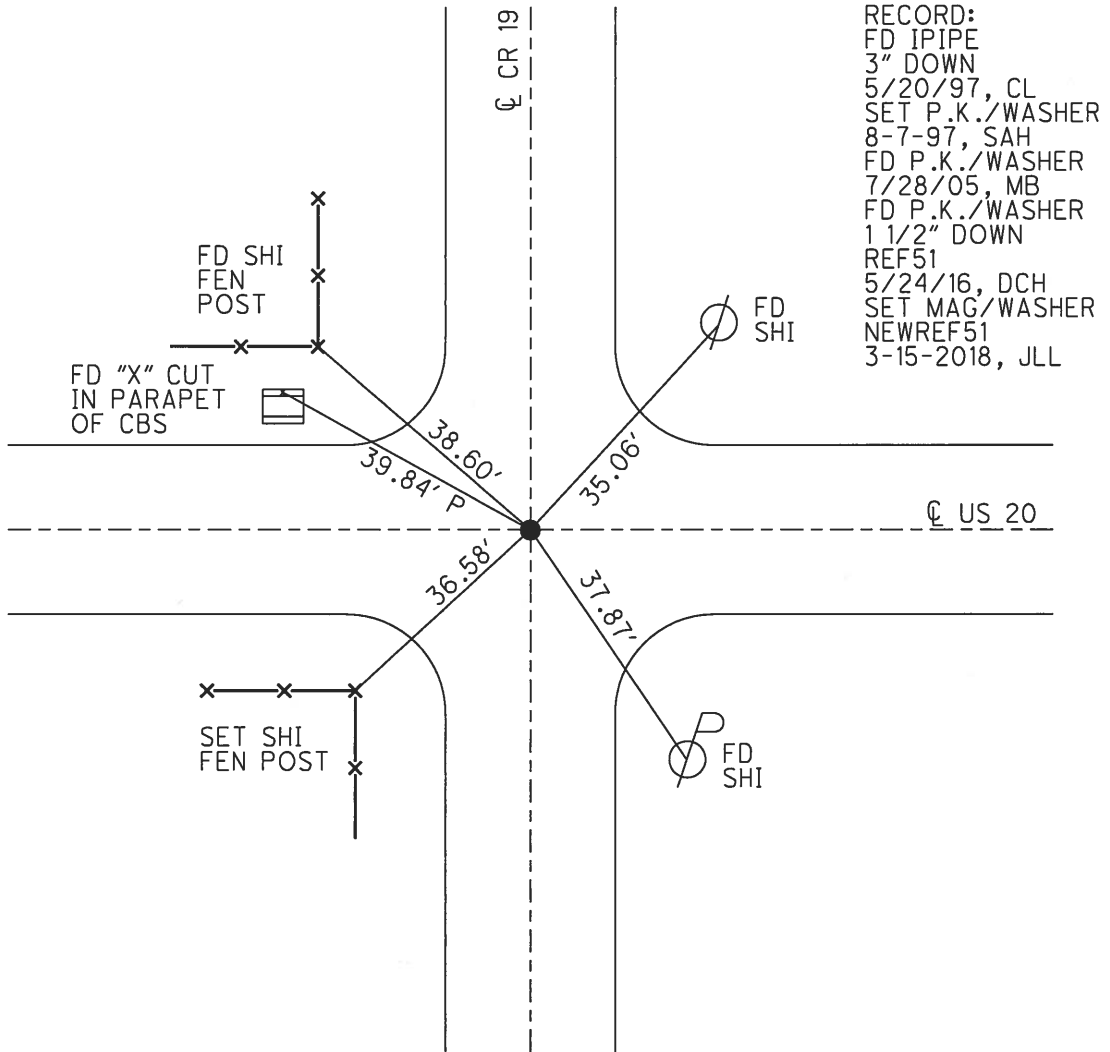
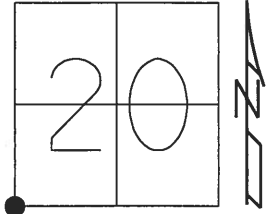


O.D.O.T. DISTRICT 2 SURVEY OFFICE (USE ONLY)

PERSONNEL _____ REFERENCE NO. 51 A SHEET 23 OF 24
 NOTES POORE DATE 8-3-17 ROUTE US 20
 H.C. LEU WEATHER SUNNY COUNTY WILLIAMS
 R.C. CARSON TEMP. 81° F TOWNSHIP MILLCREEK
 _____ HUMAN _____ SECTION 20
 _____ T 9 S R 1 W

TYPE MONUMENT P.K./WASHER
~~ON SURFACE~~ - BELOW 1 1/2"
 LEFT - ☉ PAV'T - ~~RIGHT~~ 0.25'
 _____ TO _____ EDGE PAVEMENT
 S.L.M. 1020+62.33
 Grid: Northing: 734383.705 Easting: 1433856.58



RECORD:
 FD IPIPE
 3" DOWN
 5/20/97, CL
 SET P.K./WASHER
 8-7-97, SAH
 FD P.K./WASHER
 7/28/05, MB
 FD P.K./WASHER
 1 1/2" DOWN
 REF51
 5/24/16, DCH
 SET MAG/WASHER
 NEWREF51
 3-15-2018, JLL

O.D.O.T. DISTRICT 2 SURVEY OFFICE

PERSONNEL

REFERENCE NO. 51-A

SHEET 6 OF 17

NOTES LOENRKE

H.C. CORDES

DATE 5-20-97

ROUTE U.S. #20

R.C. COX

WEATHER cloudy

COUNTY Williams

TEMP. +60°F

TOWNSHIP Millcrack

SECTION 20

T 9 S 1 R 44

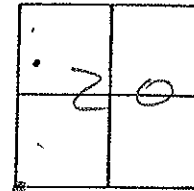
TYPE MONUMENT 1" IRON PIPE

~~ON SURFACE~~ - BELOW 3"

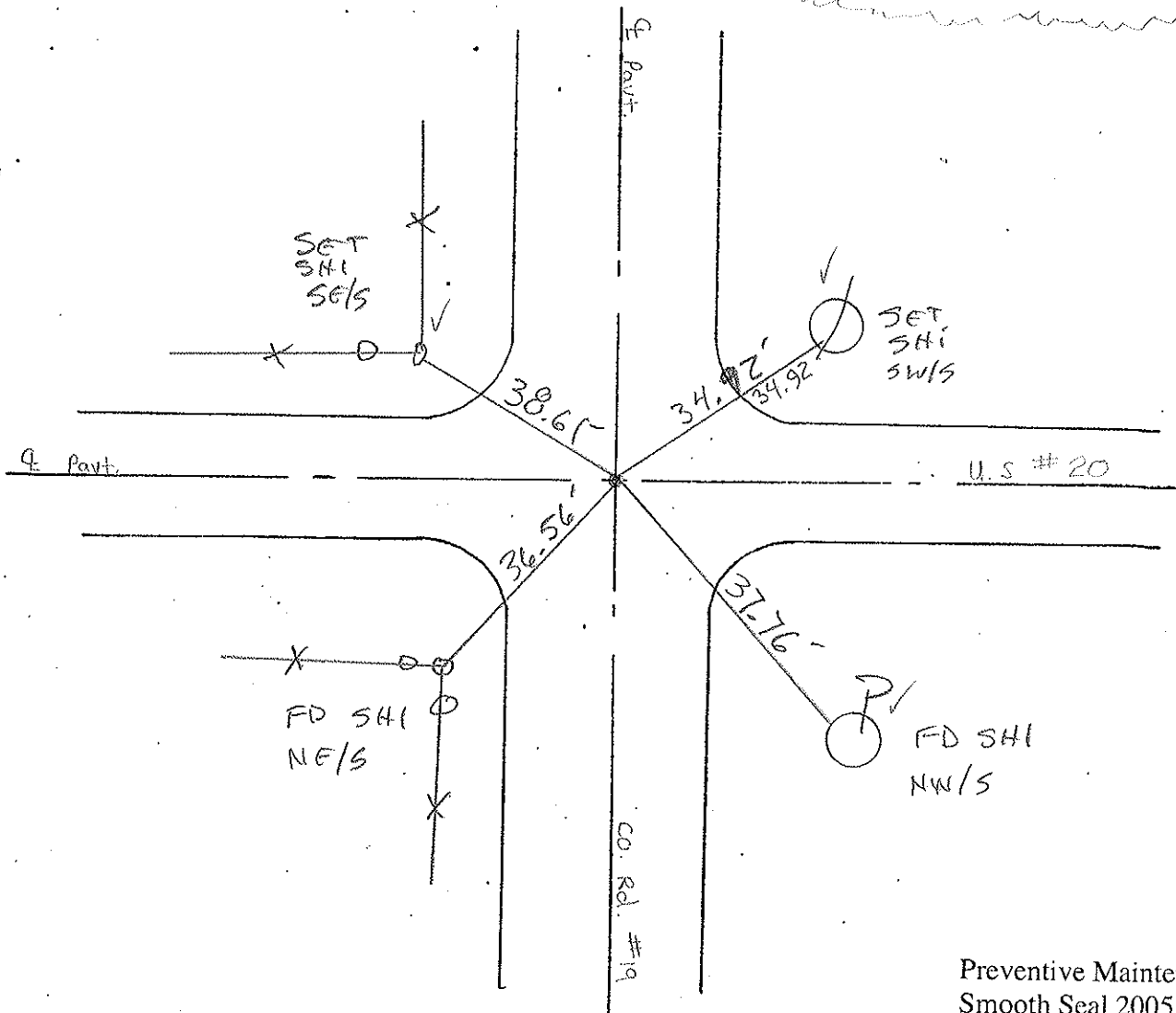
~~LEFT - & PAV'T. - RIGHT~~ YES

TO EDGE PAVEMENT

S.L.M. 1018+75 1018+90



SET PK/WASHER
 8-7-97 SAW



Preventive Maintenance
 Smooth Seal 2005
 Exist. Point Uncovered
 Date 7/28/05 M.B.