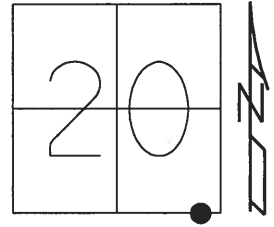


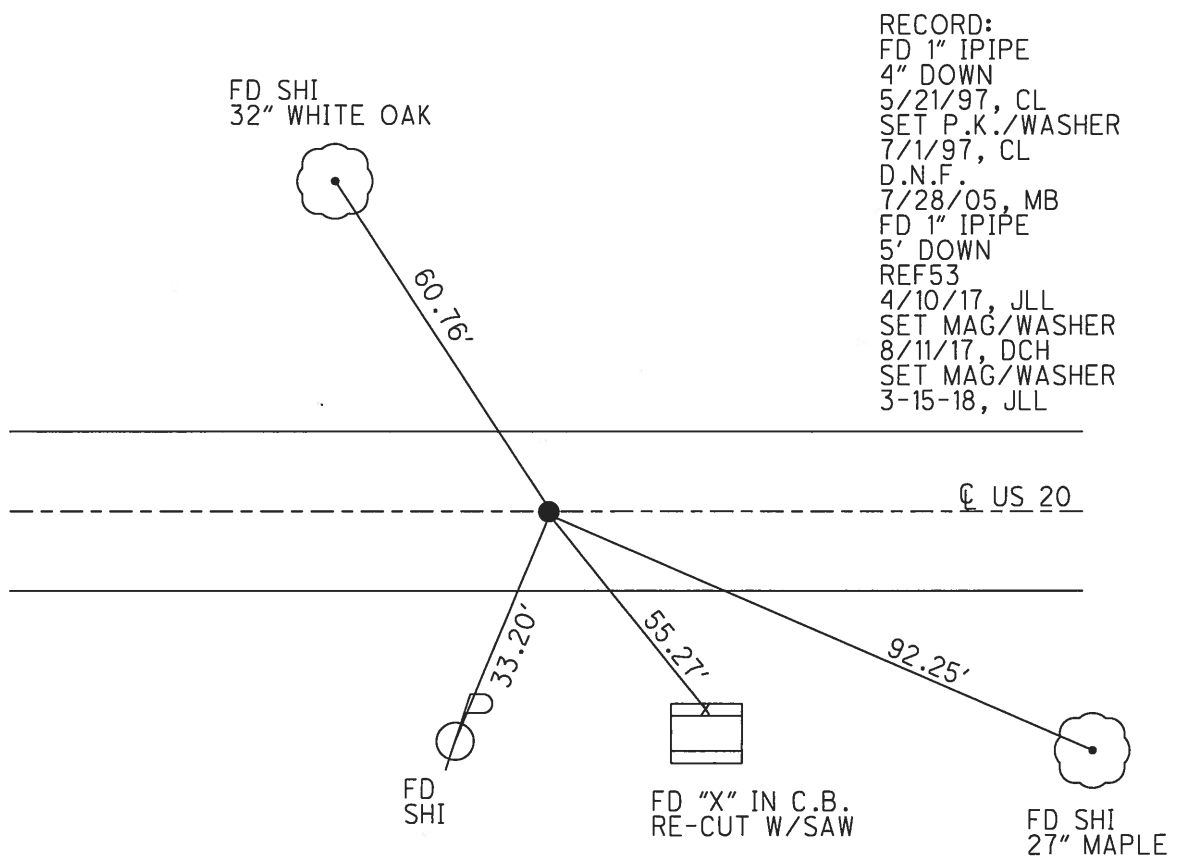
O.D.O.T. DISTRICT 2 SURVEY OFFICE (USE ONLY)

PERSONNEL \_\_\_\_\_ REFERENCE NO. 53 SHEET 1 OF 11  
 NOTES AUBLE DATE 3/15/18 ROUTE US 20  
 H.C. LEU WEATHER SUNNY COUNTY WILLIAMS  
 R.C. AUBLE TEMP. 30° TOWNSHIP MILLCREEK  
 \_\_\_\_\_ SECTION 20  
 \_\_\_\_\_ T 9 S R 1 W

TYPE MONUMENT MAG/WASHER  
 ON SURFACE - ~~BELOW~~ ON  
 LEFT - ☉ PAV'T - RIGHT ON  
12.8' TO RT EDGE PAVEMENT  
 S.L.M. 1066+27.28



Grid: Northing: 734275.871 Easting: 1438420.256



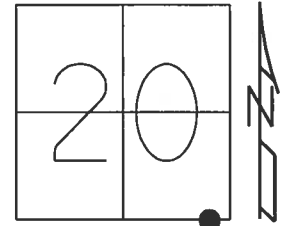
RECORD:  
 FD 1" IPIPE  
 4" DOWN  
 5/21/97, CL  
 SET P.K./WASHER  
 7/1/97, CL  
 D.N.F.  
 7/28/05, MB  
 FD 1" IPIPE  
 5' DOWN  
 REF53  
 4/10/17, JLL  
 SET MAG/WASHER  
 8/11/17, DCH  
 SET MAG/WASHER  
 3-15-18, JLL

ALVORDTON WEST CORP. LINE

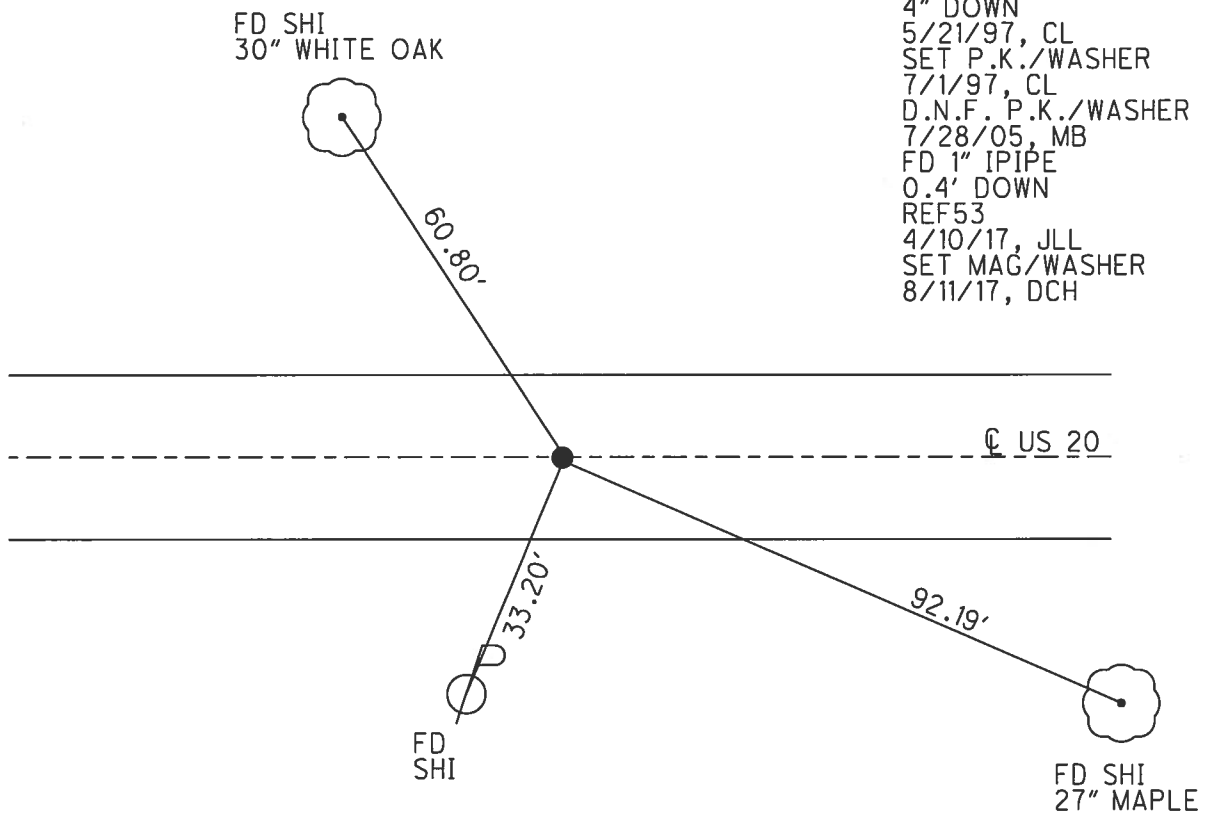
O.D.O.T. DISTRICT 2 SURVEY OFFICE (USE ONLY)

PERSONNEL \_\_\_\_\_ REFERENCE NO. 53 SHEET 1 OF 11  
 NOTES LEU DATE 8/11/2017 ROUTE US 20  
 H.C. HOMAN WEATHER CLOUDY COUNTY WILLIAMS  
 R.C. LEU TEMP. 66° TOWNSHIP MILLCREEK  
 \_\_\_\_\_ SECTION 20  
 \_\_\_\_\_ T 9 S R 1 W

TYPE MONUMENT MAG/WASHER  
 ON SURFACE - ~~BELOW~~ ON  
 LEFT - ☉ PAV'T - RIGHT ON  
12.8' TO RT EDGE PAVEMENT  
 S.L.M. 1064+60  
 Grid: Northing: 734275.871 Easting: 1438420.256



RECORD:  
 FD 1" IPIPE  
 4" DOWN  
 5/21/97, CL  
 SET P.K./WASHER  
 7/1/97, CL  
 D.N.F. P.K./WASHER  
 7/28/05, MB  
 FD 1" IPIPE  
 0.4' DOWN  
 REF53  
 4/10/17, JLL  
 SET MAG/WASHER  
 8/11/17, DCH



# O.D.O.T. DISTRICT 2 SURVEY OFFICE

PERSONNEL

REFERENCE NO. 53

SHEET 8 OF 17

NOTES LOENRKE

H.C. CORDES

R.C. HUSS

MOSER

DATE 5-21-97

WEATHER Cloudy

TEMP. +48° F

ROUTE U.S. # 20

COUNTY Williams

TOWNSHIP Millcreek

SECTION 20

T 9 S R 1 W

Set P.K./WASHER  
7-1-97

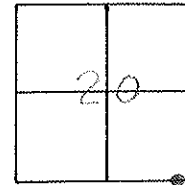
TYPE MONUMENT 1" IRON PIPE

~~ON SURFACE~~ - BELOW 4"

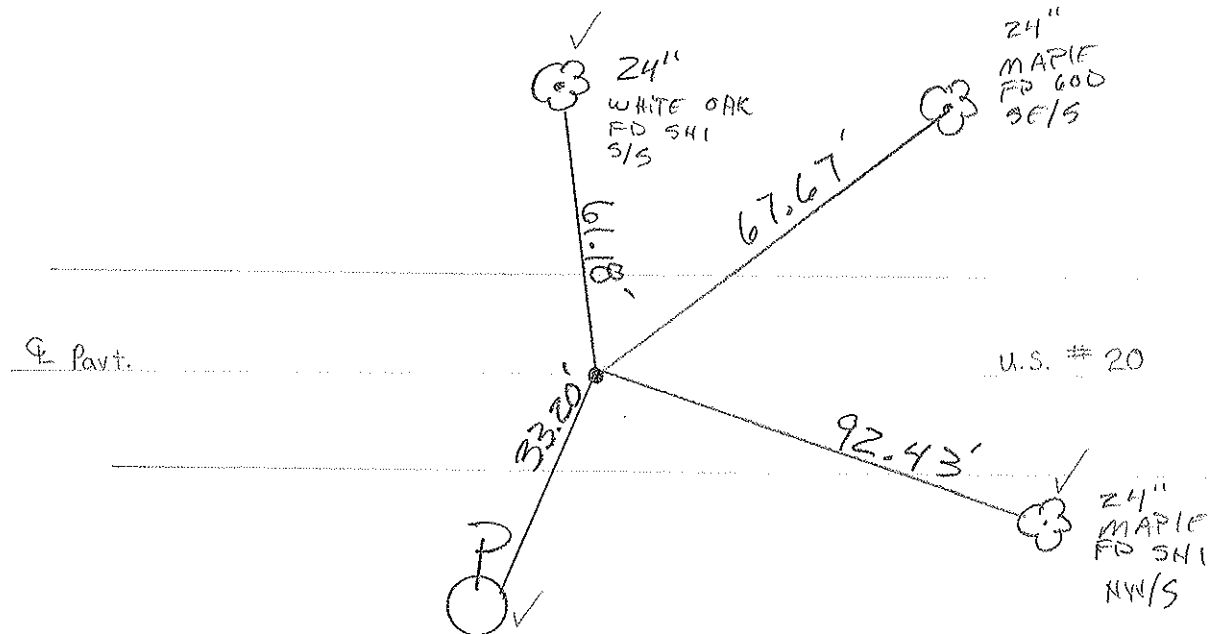
~~PAV'T.~~ - ~~PAV'T.~~ YES

12.8 TO RT EDGE PAVEMENT

S.L.M. 1065+66      1064+60



ALYDTON WEST CORP LINE



CONTRACTOR GROUND OUT PK + WASHER. DID NOT DIG UP DUE TO DEPTH OF PIPE.

Preventive Maintenance  
Smooth Seal 2005  
Exist. Point Uncovered  
Date 7/28/05 M.B.