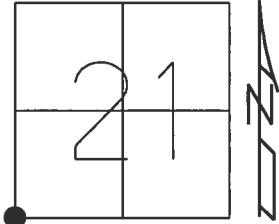


O.D.O.T. DISTRICT 2 SURVEY OFFICE (USE ONLY)

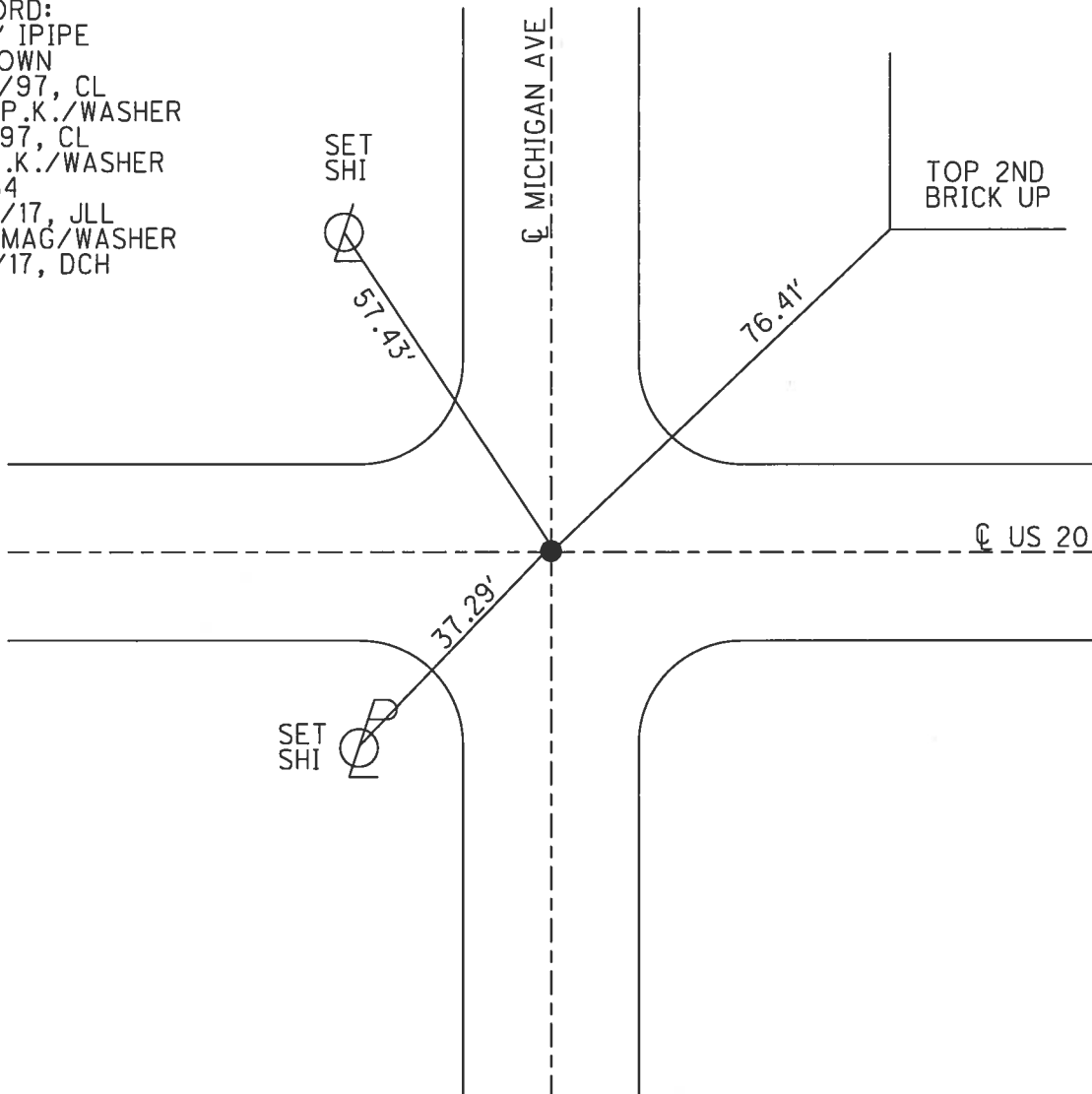
PERSONNEL _____ REFERENCE NO. 54 SHEET 2 OF 11
NOTES LEU DATE 4/10/2017 ROUTE US 20
H.C. HOMAN WEATHER CLOUDY COUNTY WILLIAMS
R.C. LEU TEMP. 65° TOWNSHIP MILLCREEK
SECTION 21
T 9 S R 1 W

TYPE MONUMENT P.K./WASHER
ON SURFACE - ~~BELOW~~ ON
LEFT - ☉ PAV'T - RIGHT ON
- TO - EDGE PAVEMENT
S.L.M. 1072+67



Grid: Northing: 734258.554 Easting: 1439129.831

RECORD:
FD 1" IPIPE
4" DOWN
5/21/97, CL
SET P.K./WASHER
7/1/97, CL
FD P.K./WASHER
REF54
4/10/17, JLL
SET MAG/WASHER
8/11/17, DCH



O.D.O.T. DISTRICT 2 SURVEY OFFICE

PERSONNEL

REFERENCE NO. 54

SHEET 9 OF 17

NOTES LOEHRKE

H.C. COEDS D

R.C. HUSS

P MOSEK

DATE 5-21-97

WEATHER SUN

TEMP. +50°F

ROUTE 20

COUNTY WILLIAMS

TOWNSHIP MILLICEK

SECTION 21

T 9 S R 1 W

Set PK/WASHER
11.97

TYPE MONUMENT 1 1/2" PIPE

~~ON~~ SURFACE - BELOW 4"

~~LEFT -~~ ~~E~~ PAV'T. - RIGHT .4 RT

TO EDGE PAVEMENT

S.L.M. 1072 +67

