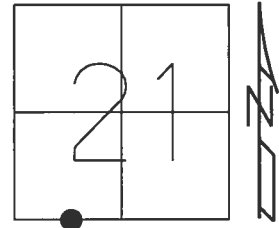


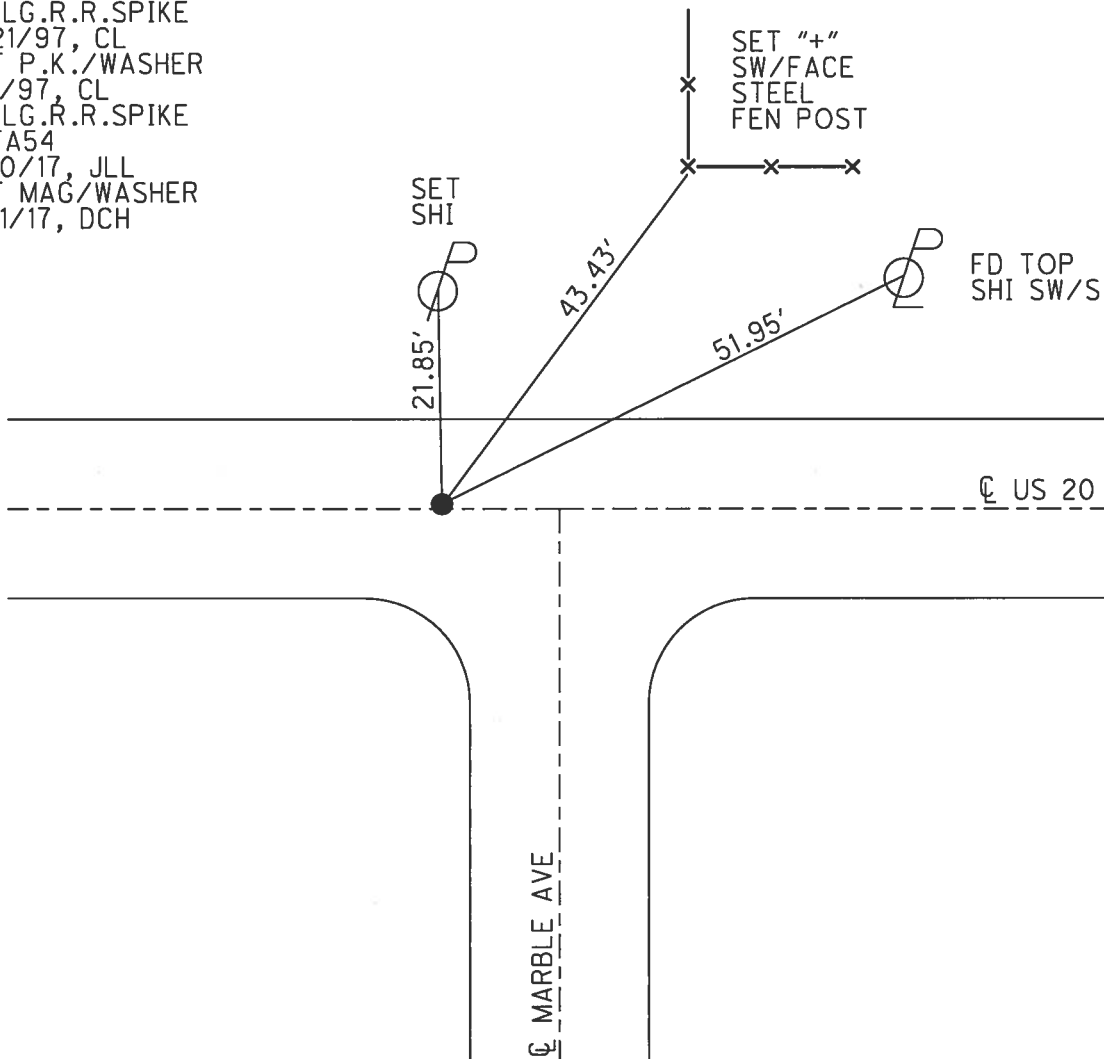
O.D.O.T. DISTRICT 2 SURVEY OFFICE (USE ONLY)

PERSONNEL \_\_\_\_\_ REFERENCE NO. 54 B SHEET 4 OF 11  
 NOTES LEU DATE 4/10/2017 ROUTE US 20  
 H.C. HOMAN WEATHER CLOUDY COUNTY WILLIAMS  
 R.C. LEU TEMP. 65° TOWNSHIP MILLCREEK  
 \_\_\_\_\_ SECTION 21  
 \_\_\_\_\_ T 9 S R 1 W

TYPE MONUMENT 3/4" IPIPE  
~~ON SURFACE~~ - BELOW 7"  
 LEFT - ☉ PAV'T - RIGHT ON, 30'W OF ☉ S  
11.8' TO RT EDGE PAVEMENT  
 S.L.M. 1085+83  
 Grid: Northing: 734237.817 Easting: 1440440.715



RECORD:  
 FD LG.R.R.SPIKE  
 5/21/97, CL  
 SET P.K./WASHER  
 7/1/97, CL  
 FD LG.R.R.SPIKE  
 REFA54  
 4/10/17, JLL  
 SET MAG/WASHER  
 8/11/17, DCH



# O.D.O.T. DISTRICT 2 SURVEY OFFICE

PERSONNEL

REFERENCE NO. 54-B SHEET 11 OF 17

NOTES LOEHRKE  
 H.C. CORDES DA  
 R.C. MUSS  
P MOSEK

DATE 5-21-97  
 WEATHER SUN  
 TEMP. +50°F

ROUTE 20  
 COUNTY WILLIAMS  
 TOWNSHIP MILLCREEK  
 SECTION 21  
 T 9 S R L W

Set P.K./WASHER  
 7-1-97

TYPE MONUMENT 3/4" I PIPE  
~~ON SURFACE~~ - BELOW 4"  
~~LEFT - C~~ PAV'T. - ~~RIGHT~~ YES  
11.8 TO RT EDGE PAVEMENT  
 S.L.M. 1085+03

