

O.D.O.T. DISTRICT 2 SURVEY OFFICE (USE ONLY)

PERSONNEL _____ REFERENCE NO. 55 SHEET 5 OF 11

NOTES LEU DATE 4/10/2017 ROUTE US 20
 H.C. HOMAN WEATHER PTLY CLOUDY COUNTY WILLIAMS
 R.C. LEU TEMP. 64° TOWNSHIP MILLCREEK
 _____ SECTION 21
 _____ T 9 S R 1 W

TYPE MONUMENT 1" IPIPE

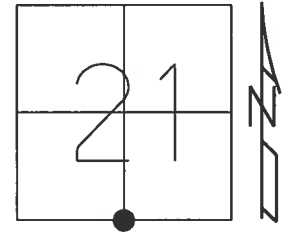
~~ON SURFACE~~ - BELOW 7"

LEFT - CL PAV'T - RIGHT ON

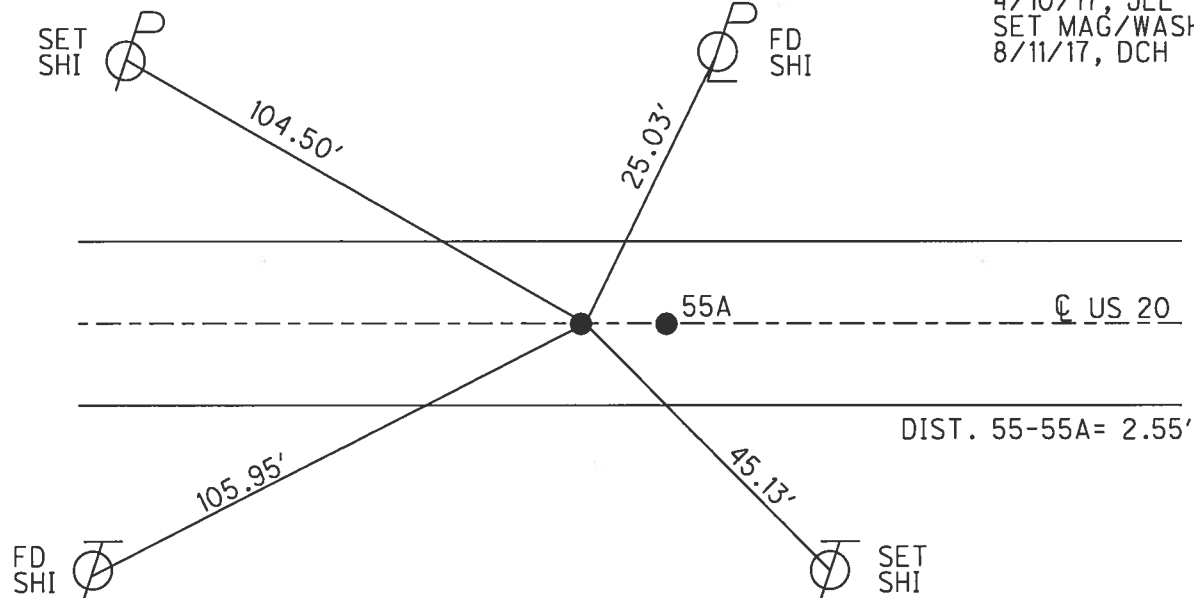
11.9' TO RT EDGE PAVEMENT

S.L.M. 1098+94

Grid: Northing: 734216.877 Easting: 1441751.203



RECORD:
 FD P.K./WASHER
 5/21/97, CL
 SET P.K./WASHER
 7/1/97, CL
 FD 1" IPIPE
 7" BELOW
 REF55
 4/10/17, JLL
 SET MAG/WASHER
 8/11/17, DCH



O.D.O.T. DISTRICT 2 SURVEY OFFICE

PERSONNEL

REFERENCE NO. 55

SHEET 12 OF 17

NOTES LOERKE

H.C. CORDES DJ

R.C. MOSER

P NUSS

DATE 5-21-97

WEATHER SUN

TEMP. +50°F

ROUTE 20

COUNTY WILLIAMS

TOWNSHIP MILLCREEK

SECTION 21

T. 9 S R. 1 W

Reset Ball
7-97

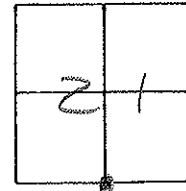
TYPE MONUMENT "A" = PK & WASHER "B" = PK & WASHER

ON SURFACE - ~~BELOW~~ YES

LEFT- ~~PAV'T~~ - ~~RIGHT~~ "A" = 0.2 LT "B" = 0.2 LT

11.9 TO RT EDGE PAVEMENT BOTH "A" & "B"

S.L. "A" = 1098+94 "B" = 1098+96



ALLOCATION EAST CORP LINE
West of R.P. Crossing

