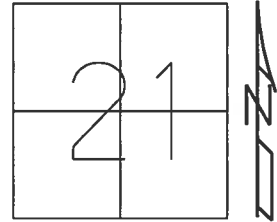


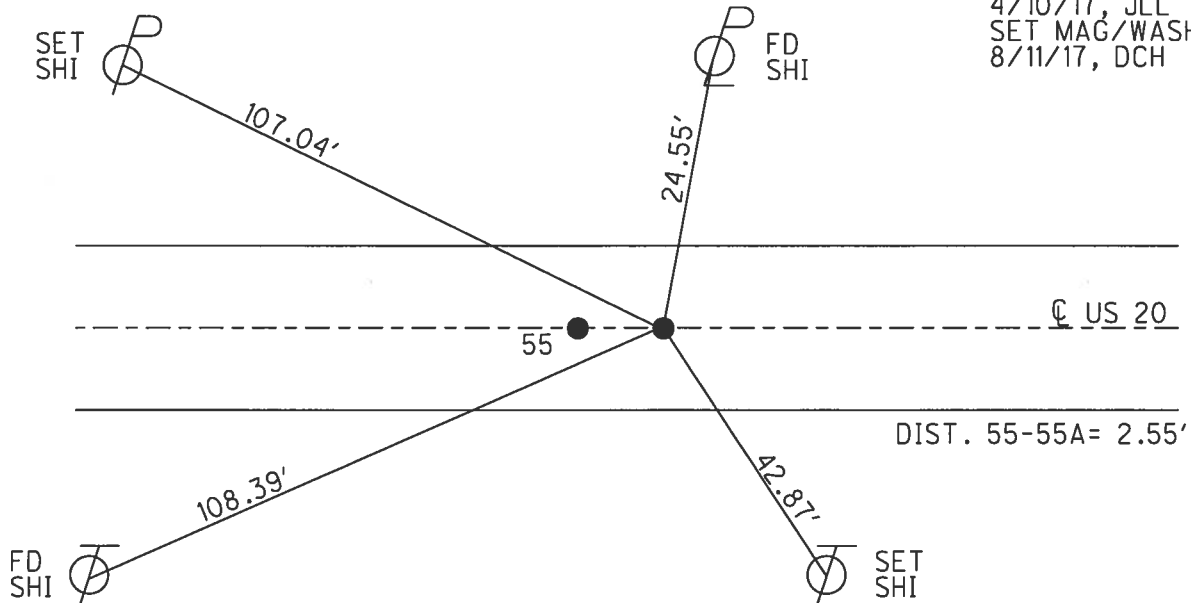
O.D.O.T. DISTRICT 2 SURVEY OFFICE (USE ONLY)

PERSONNEL \_\_\_\_\_ REFERENCE NO. 55 A SHEET 6 OF 11  
 NOTES LEU DATE 4/10/2017 ROUTE US 20  
 H.C. HOMAN WEATHER PTLY CLOUDY COUNTY WILLIAMS  
 R.C. LEU TEMP. 64° TOWNSHIP MILLCREEK  
 \_\_\_\_\_ SECTION 21  
 \_\_\_\_\_ T 9 S R 1 W

TYPE MONUMENT LG.R.R.SPIKE  
~~ON SURFACE~~ - BELOW 4 1/2"  
 LEFT - ☉ PAV'T - RIGHT ON  
11.9' TO RT EDGE PAVEMENT  
 S.L.M. 1098+96  
 Grid: Northing: 734216.650 Easting: 1441753.771



RECORD:  
 FD P.K./WASHER  
 5/21/97, CL  
 SET P.K./WASHER  
 7/1/97, CL  
 FD LG.R.R.SPIKE  
 4 1/2" DOWN  
 REFA55  
 4/10/17, JLL  
 SET MAG/WASHER  
 8/11/17, DCH



# O.D.O.T. DISTRICT 2 SURVEY OFFICE

PERSONNEL

REFERENCE NO. 55

SHEET 12 OF 17

NOTES LOERKE

H.C. CORDES DJ

R.C. MOSER

P NUSS

DATE 5-21-97

WEATHER SUN

TEMP. +50°F

ROUTE 20

COUNTY WILLIAMS

TOWNSHIP MILLCREEK

SECTION 21

T 9 S R 1 W

Reset Ball  
7-97

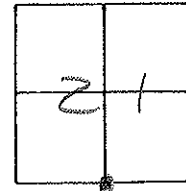
TYPE MONUMENT "A" = PK & WASHER "B" = PK & WASHER

ON SURFACE - ~~BELOW~~ YES

LEFT- ~~PAV'T~~ - ~~RIGHT~~ "A" = 0.2 LT "B" = 0.2 LT

11.9 TO RT EDGE PAVEMENT BOTH "A" & "B"

S.L. "A" = 1098+94 "B" = 1098+96



ALLOCATION EAST CORP LINE  
West of R.P. Crossing

