

O.D.O.T. DISTRICT 2 SURVEY OFFICE (USE ONLY)

PERSONNEL _____ REFERENCE NO. 57 SHEET 8 OF 11

NOTES LEU DATE 4/10/2017 ROUTE US 20
 H.C. HOMAN WEATHER PTLY CLOUDY COUNTY WILLIAMS
 R.C. LEU TEMP. 59° TOWNSHIP MILLCREEK
 SECTION 22
 T 9 S R 1 W

TYPE MONUMENT 1" IPIPE

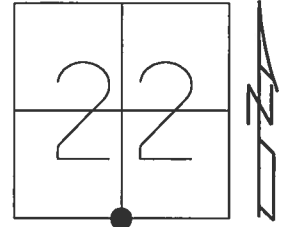
~~ON SURFACE~~ - BELOW 8 1/2"

LEFT - CL PAV'T - ~~RIGHT~~ 1.0'

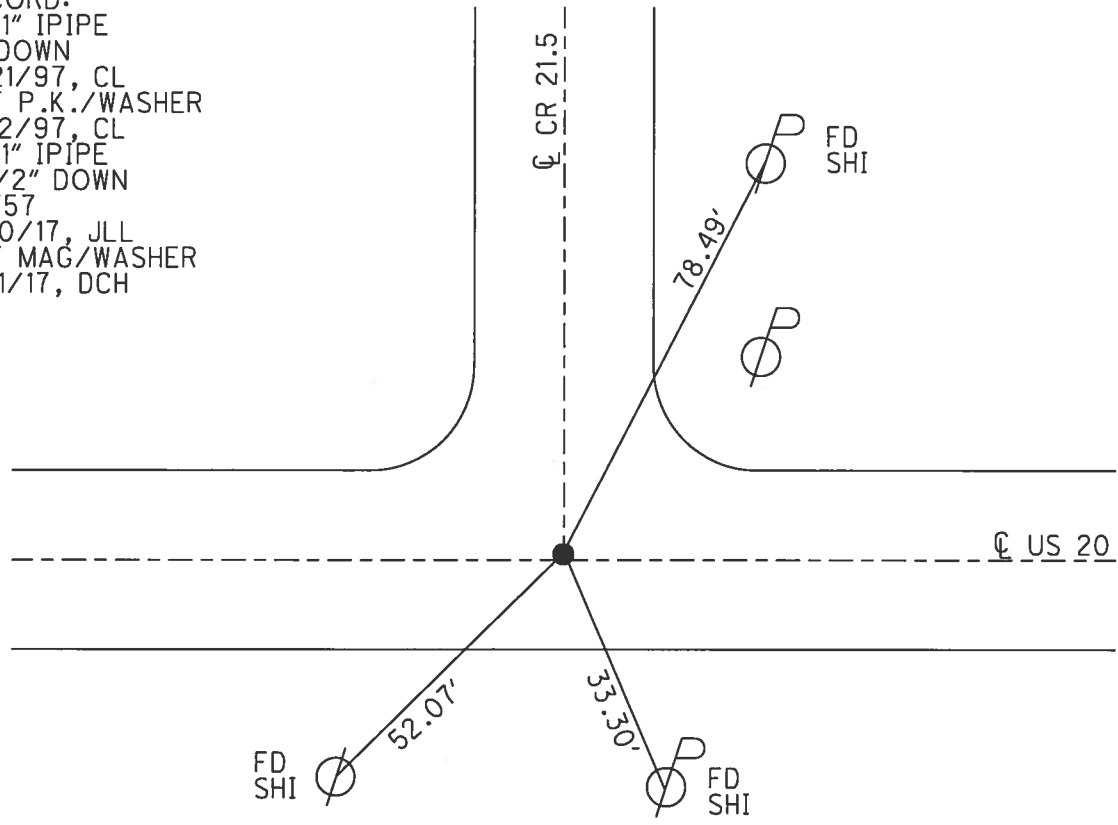
12.5' TO RT EDGE PAVEMENT

S.L.M. 1151+71

Grid: Northing: 734141.975 Easting: 1447013.063



RECORD:
 FD 1" IPIPE
 4" DOWN
 5/21/97, CL
 SET P.K./WASHER
 8/12/97, CL
 FD 1" IPIPE
 8 1/2" DOWN
 REF57
 4/10/17, JLL
 SET MAG/WASHER
 8/11/17, DCH



O.D.O.T. DISTRICT 2 SURVEY OFFICE

PERSONNEL

REFERENCE NO. 57

SHEET 14 OF 17

NOTES LOEHRKE

H.C. CORDES M

R.C. MOSER

N HUSS

DATE 5-21-97

WEATHER SUN

TEMP. +55°F

*Set P.K./WASHER
8-17-97*

ROUTE 20

COUNTY WILLIAMS

TOWNSHIP MILLCREEK

SECTION 22

T 9 S R 1 W

TYPE MONUMENT 1" I PIPE

~~ON SURFACE~~ - BELOW 4"

~~PAV'T~~ - RIGHT .4 FT LEFT

12.5 TO RT EDGE PAVEMENT

S.L.M. 1151471

