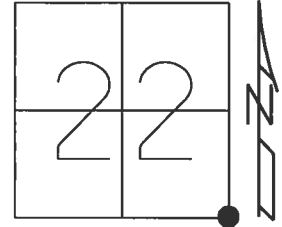


O.D.O.T. DISTRICT 2 SURVEY OFFICE (USE ONLY)

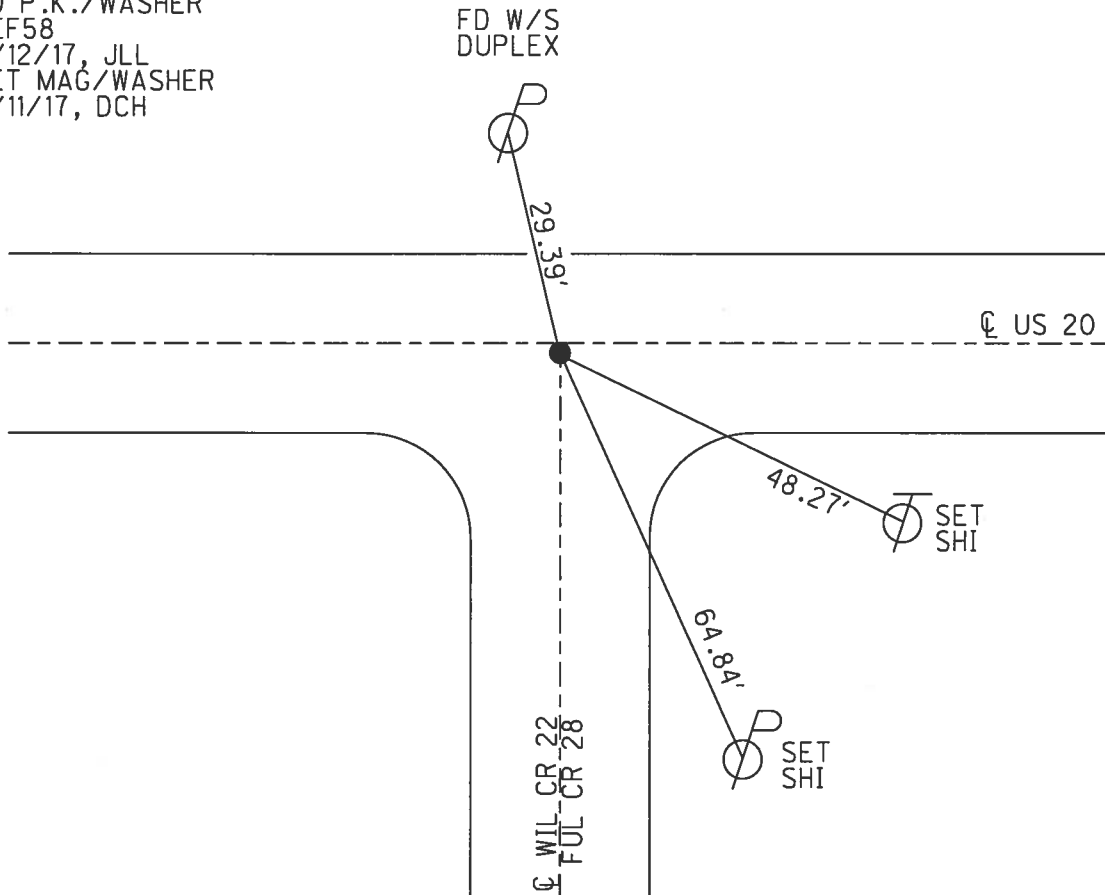
PERSONNEL _____ REFERENCE NO. 58 SHEET 11 OF 11
 NOTES LEU DATE 4/12/2017 ROUTE US 20
 H.C. HOMAN WEATHER SUNNY COUNTY WILLIAMS
 R.C. LEU TEMP. 42° TOWNSHIP MILLCREEK
 _____ SECTION 22
 _____ T 9 S R 1 W

TYPE MONUMENT P.K./WASHER
 ON SURFACE - ~~BELOW~~ ON _____
~~LEFT~~ - CL PAV'T - RIGHT 1.0'
12.9' TO RT EDGE PAVEMENT
 S.L.M. 1177+96
 Grid: Northing: 734080.677 Easting: 1449631.269



NOTE: REF 1 FULTON CO.

RECORD:
 FD 3/4" IPIPE
 3" DOWN
 5/21/97, CL
 SET P.K./WASHER
 8/12/97, CL
 FD P.K./WASHER
 REF58
 4/12/17, JLL
 SET MAG/WASHER
 8/11/17, DCH



O.D.O.T. DISTRICT 2 SURVEY OFFICE

PERSONNEL

REFERENCE NO. 58

SHEET 17 OF 17

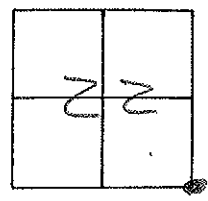
NOTES LOETIKER
 H.C. CORDES
 R.C. MOSEK
MUSS

DATE 5-21-97
 WEATHER SUN
 TEMP. +60°F

ROUTE 20
 COUNTY WILLIAMS
 TOWNSHIP MILLCREEK
 SECTION 22
 T 9 S R 1 W

Set P.K. WASHER
8-12-97

TYPE MONUMENT 3/4" I PIPE
~~ON~~ SURFACE - BELOW 3"
~~LEFT - C~~ PAV'T - RIGHT 0.5 RT
12.9 TO RT EDGE PAVEMENT
 S.L.M. 1177496



WILLIAMS - FULTON CO LINE

