

#1012

FOR ALL QUESTIONS CONTACT DISTRICT 2 REAL ESTATE AT 419-353-8131

# STATE OF OHIO DEPARTMENT OF HIGHWAYS

FED. RD. DIST. NO.	STATE	PROJECT	FISCAL YEAR
10	OHIO		1938

1  
6

WILLIAMS COUNTY  
S.H. 310 - SEC. F-1

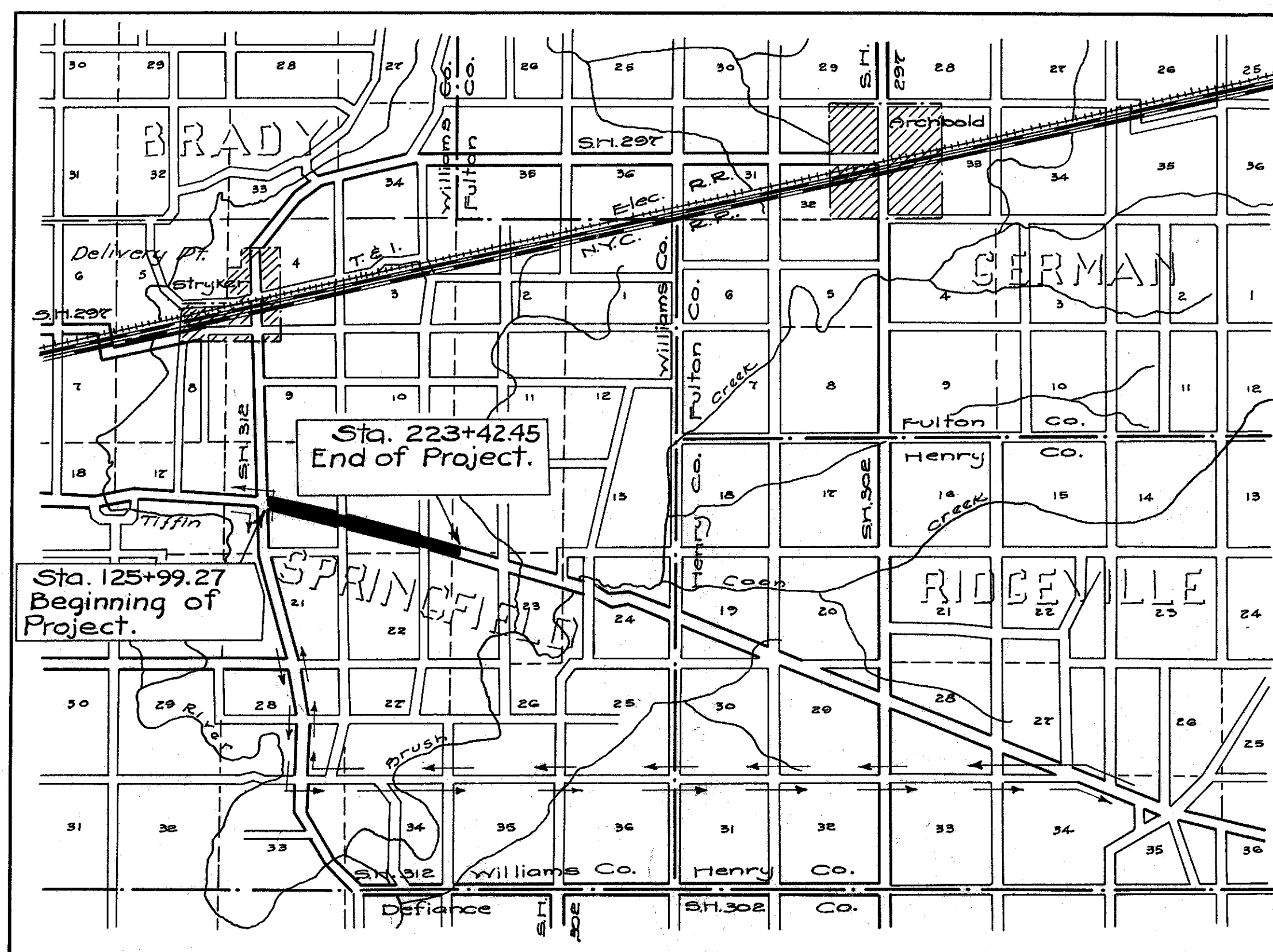
# BRYAN-NAPOLEON ROAD S.H. No. 310 SEC. F-1 WILLIAMS COUNTY SPRINGFIELD TOWNSHIP

NET LENGTH OF PROJECT = 9735.18 LIN. FT.  
OR 1.843 MILES

The Standard Specifications of the State of Ohio, Department of Highways as adopted Nov. 1, 1935, except as noted herein with reference to Item E-1.05, together with Changes and Errata No. 3 and No. 4, and Items B-20, T-30, T-31, G-6.05, M-2.7, M-5 and E-1.11 adopted June 7, 1938, Section 9-3 adopted July 18, 1938, and Section G-2.11 as modified in accordance with note in the proposal, will govern this improvement.

### CONVENTIONAL SIGNS

STATE LINE	-----
COUNTY LINE	-----
TOWNSHIP LINE	-----
SECTION LINE	-----
CENTER LINE	-----
PROPERTY LINE	-----
CITY OR VILLAGE LINE	-----
FENCE LINE	x x x
STEAM RAILROAD	====
ELECTRIC RAILROAD	---+---+---+---
POLE LINE	o o o o
GUARD RAIL	o o o o
DRAIN PIPE, NEW	-----
DRAIN PIPE, OLD	-----



### LOCATION PLAN

SCALE OF MILES  
0 1 2 3

DELIVERY POINT  
STRYKER - OHIO  
AVERAGE HAUL 2 3/4 MILES

PORTION TO BE IMPROVED  
DETOURS SHOWN THIS  
STATE HIGHWAYS  
IMPROVED COUNTY ROADS  
UNIMPROVED COUNTY ROADS

### SCALES

PLAN 1" = 100'  
PROFILE-VERTICAL 1" = 5'  
PROFILE-HORIZONTAL 1" = 100'

### INDEX OF SHEETS

TITLE SHEET	1
PLAN & PROFILE	3-6
SUMMARY OF DRAINAGE	6
GENERAL SUMMARY	2
TYPICAL SECTION	2

### LINE DATA

Beginning of Project , Sta. 125+99.27  
End of Project , Sta. 223+42.45  
Gross Length = 9743.18 Lin. Ft.  
Additions ~ None  
Deductions ~ For existing pavement,  
Sta. 125+99.27 to Sta. 126+07.27 = 8.00 Lin. Ft.  
Net Length = 9743.18 - 8.00 = 9735.18 Lin. Ft.  
or 1.843 Miles.

SUPPLEMENTAL PRINTS OF STANDARD CONST. DRAWINGS	
DRAWING	DATE
G-7.07	OCT. 1935
S-27, P.O. 3	1-1-36
I-1, 2, 3, 4 & 5	1-1-36
I-8 C.B. 1, 2, 2-2	11-12-35
I-8 C.B. 1-3, 1-4	11-12-35

I hereby approve these plans and declare that the making of this improvement will require the closing to traffic of the highway and that a detour will be provided as shown on the plans and estimates.

The right of way necessary for this improvement will be provided by the State of Ohio.

Approved \_\_\_\_\_  
Date \_\_\_\_\_ Resident District Deputy Director.

Approved *M. St. Joseph*  
Date *6-11-38* Resident Division Deputy Director.

Approved *W. H. ...*  
Date \_\_\_\_\_ Chief Engineer, Bureau of Maintenance.

Approved \_\_\_\_\_  
Date \_\_\_\_\_ Chief Engineer, Bureau of Bridges.

Approved *W. H. ...* P.C. 483  
Date *6-27-38* Chief Engineer, Location & Design.

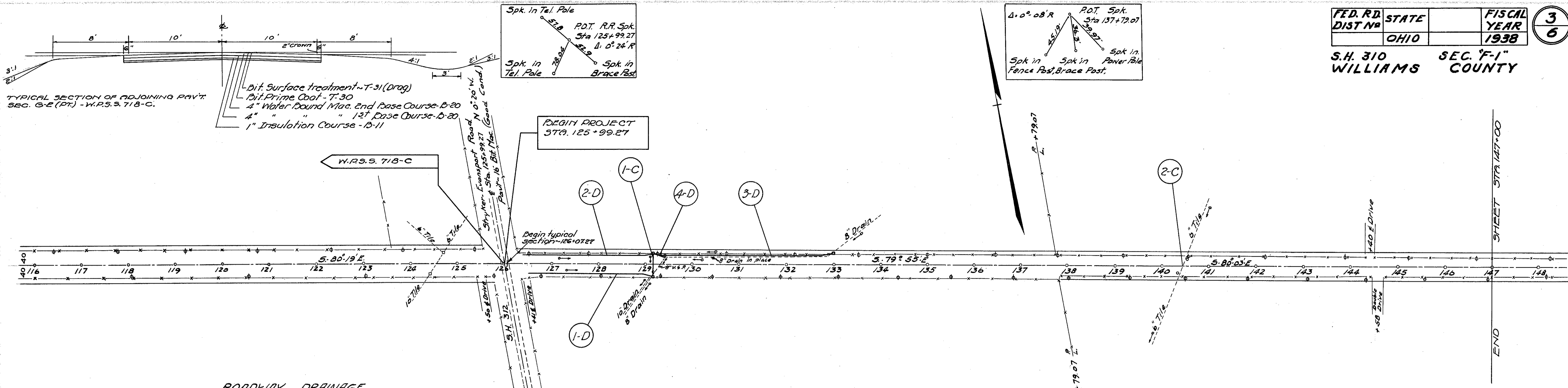
Approved *W. H. ...*  
Date *6-27-38* First Asst. Director and Chief Engineer.

Approved *John J. ...*  
Date *6-28-38* Director of Highways.



296

FILE WILLIAMS - 310 - F-1  
NO. DATE OF LETTING  
296 CONTRACT NO.

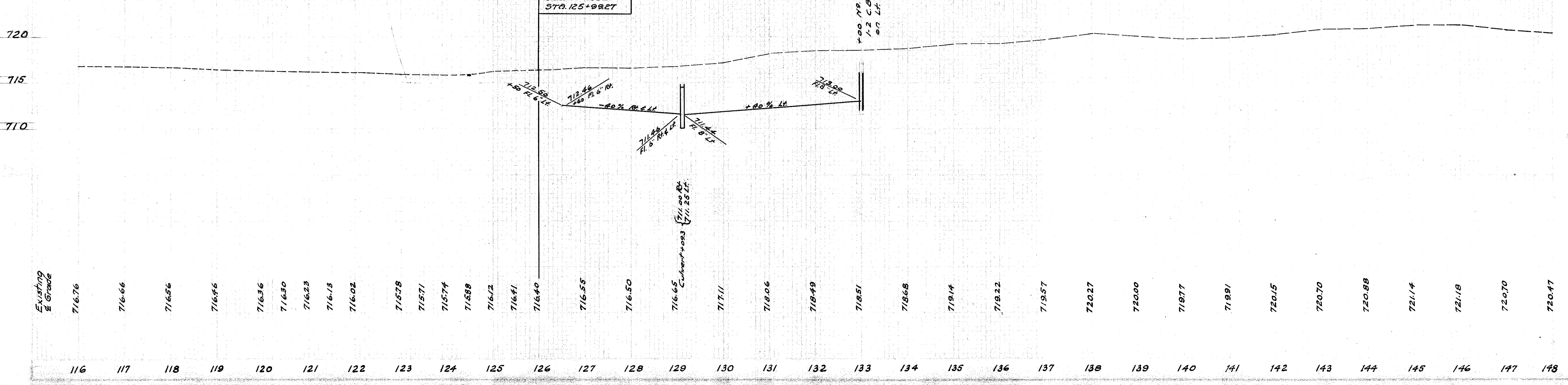


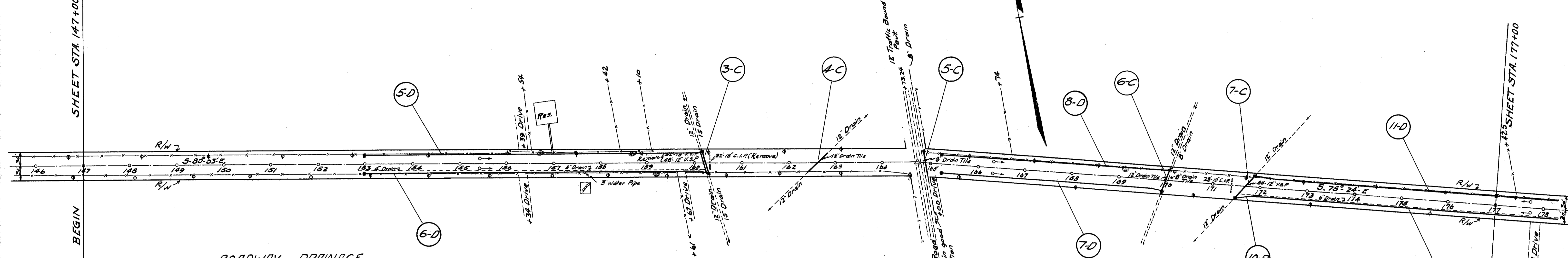
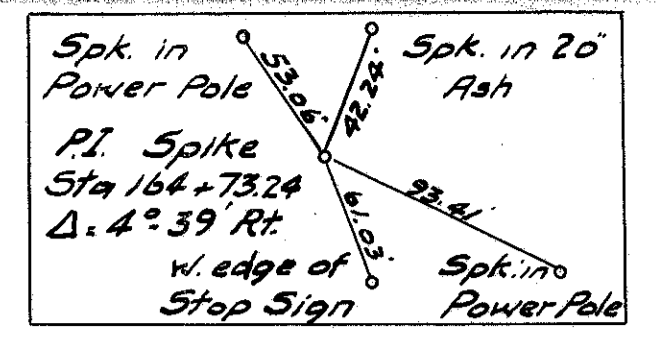
ROADWAY DRAINAGE

Ref. No.	Station From	Station To	Rt. or Lt.	Pipe for Roadway Drainage - Lin. Ft.	Roadway Pipe under Drives - Lin. Ft.	Catch Basins No. 1-2 Each	REMARKS
1-D	126+60	129+08	Rt.	248			
2-D	126+50	129+08	Lt.	258			
3-D	129+10	133+00	Lt.	389		1	Build C.B. Sta 133+00
4-D	129+10	129+46	Lt.	36			Use to connect existing 8" drain to C.B.
<b>TOTALS</b>				506	425	1	

STRUCTURES 20' SPAN & UNDER "C"

Structure Number and Station	Data on Existing Structure	Proposed Work	Item E-2 Structure Excav (Unc) Cu.Yds	Item I-6 - Pipe Removed and Stored - Lin. Ft.			Item S-27 - Pipe for Roadway Culverts - Lin. Ft.	Item I-8 Catch Basins No. 1-2 Each	Item "Spec." Existing Catch Basins Removed and Disposed of Each
				6"	10"	12"			
1-C 129+093	Type - C.I.P. Culvert and Catch Basins Size - 12" x 32" Condition ~ Poor	Remove and store 32'-12" C.I.P. Remove and dispose of existing Catch Basin. Build 12' x 48' Pipe Culv. and 2 Std. 1-2 C.B. Make all Connections.	30		32		48	2	1
2-C 140+443	Type - Drain Tile Culvert Size - 6" x 52" Condition Poor	Remove and store 6'-52" Drain Tile Culvert. Abandon existing Inlets. Build 12' x 48' Pipe Culv. 2 Std. 1-2 C.B. Make all Connections	23	52			48	2	
<b>Totals</b>				53	52	32	96	4	1



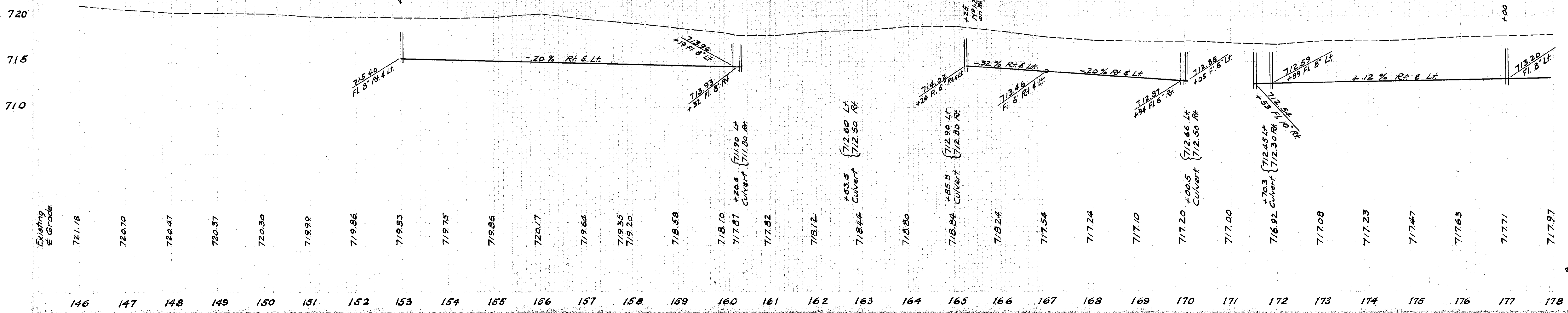


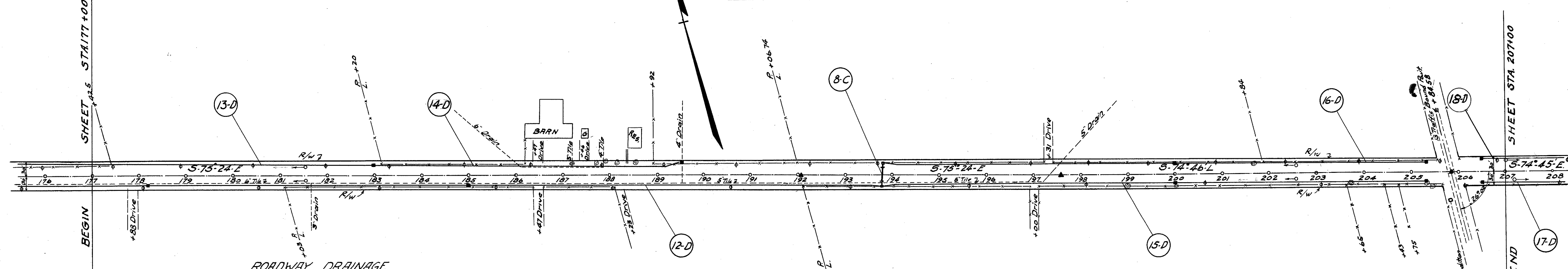
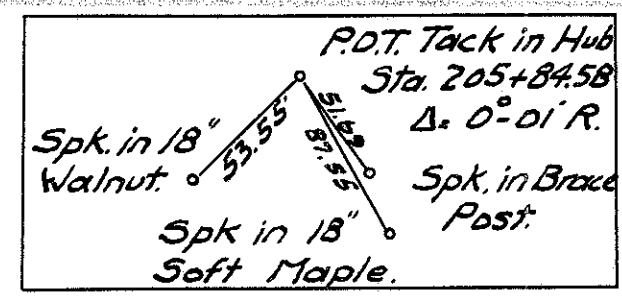
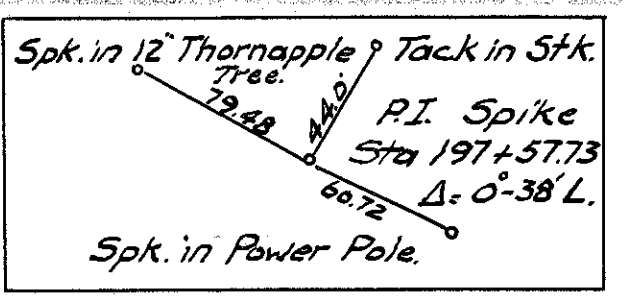
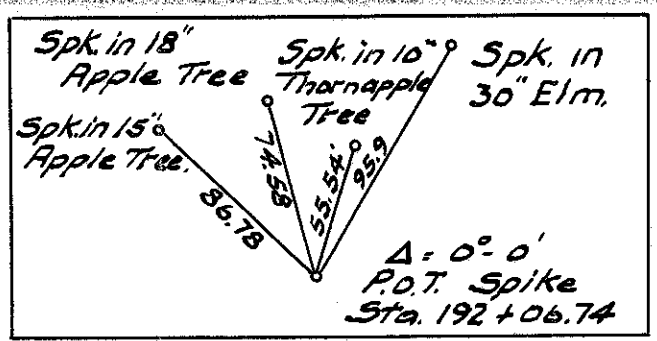
ROADWAY DRAINAGE.

Ref. No.	Station		Rt. or Lt.	Pipe for Roadway Drainage - Lin. Ft.			Roadway Pipe under Drives - Lin. Ft.			Catch Basin No. 1-2 Each	REMARKS
	From	To		6"	8"	10"	6"	8"	10"		
5-D	153+00	160+19	Lt.	697			21			1	C.B. at Sta. 153+00 - Pipe at Drive Sta. 156+38
6-D	153+00	160+32	Rt.	689			42			1	C.B. at Sta. 153+00 - Pipe at Drive Sta. 159+34
7-D	165+24	169+94	Rt.	468						1	C.B. at Sta. 165+25
8-D	165+24	170+05	Lt.	479						1	C.B. at Sta. 165+25
9-D	171+53	177+00	Rt.		547						Connect to 6" Drain at Sta. 172+00
10-D	171+53	172+00	Rt.	47							C.B. at Sta. 172+00
11-D	171+89	177+00	Lt.		509						
Totals				994	1895	547		63		5	

STRUCTURES 20' SPAN AND UNDER "C."

Structure Number and Station	Data on Existing Structure	Proposed Work.	Item E-2 Structure Exco. (Und.) Cu. Yds.	Item I-6 - Pipe Removed and Stored - Lin. Ft.					Item S-27 - Pipe for Roadway Culverts - Lin. Ft.		Item I-8 Catch Basins			
				8"	10"	12"	15"	18"	12"	15"	24"	No. 1-2 Each	No. 1-3 Each	
3-C 160+26.6	Type: V.S.P. and C.I.P. Culverts and Inlets Size: 32"x18", 52"x15" and 48"x12" Condition: Poor	Remove and store existing Pipe, Abandon the Inlets Build new 12"x48" and 24"x52" Pipe Culverts and 2 Std. 1-2 Catch Basins. Make all connections.	60			48	52	32	48	52		2		
4-C 162+63	Type: Drain Tile Culvert Size: 57" x 12" Condition: Poor	Remove and store existing Pipe Build new 12" x 57" Pipe Culvert	34			57			57					
5-C 164+85.8	Type: Drain Tile Culvert Size: 51" x 8" Condition: Poor	Remove and store existing Pipe Build new 12" x 51" Pipe Culvert	26	51					51					
6-C 170+00.5	Type: Drain Tile Culvert Size: 52" x 12" Condition: Poor	Remove and store existing Pipe Build new 18" x 48" Pipe Culvert and 2 Std. 1-2 Catch Basins, make all Conn.	27			52			48			2		
7-C 171+70.3	Type: V.S.P. and C.I.P. Culverts and Drain Tile Size: 64"x12", V.S.P. 28"x10", C.I.P. 12" x 8" Drain Tile Condition: Poor	Remove and store existing 10" and 12" Pipe and 8" Drain, Remove and dispose of 2 existing Catch Basins. Build new 15" x 60" Pipe Culvert, 2 Std. 1-2 Catch Basins and make all connections.	30	12	28	64			60			2		
TOTALS				177	63	28	221	52	32	156	108	52	4	2



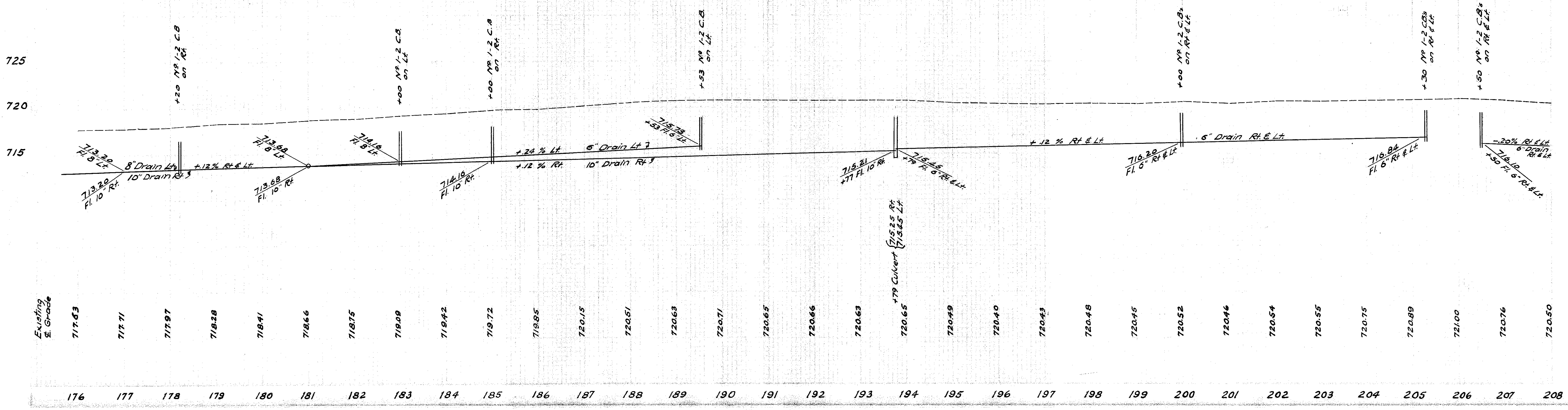


ROADWAY DRAINAGE.

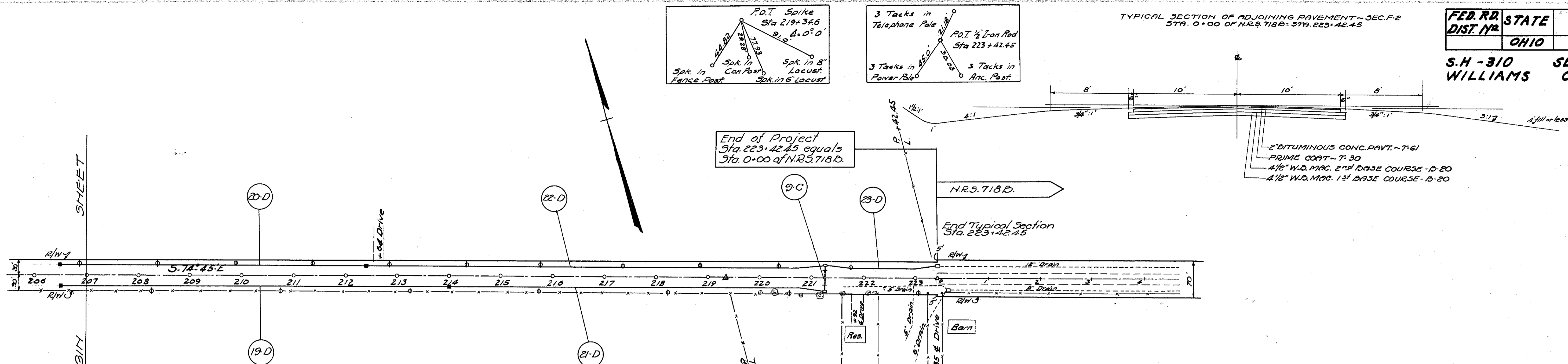
Ref. No.	Station		Rt or Lt	Pipe for Roadway Drainage - Lin. Ft.			Roadway Pipe under Drives - Lin. Ft.			Catch Basins Sta. No. 1-2	REMARKS
	From	To		6"	8"	10"	6"	8"	10"		
12-D	177+00	193+77	Rt			1610			63	C.B. at Sta. 178+20, C.B. at Sta. 183+00, Pipe at Drives	
13-D	177+00	183+00	Lt	598					1	C.B. at Sta. 183+00	
14-D	183+00	189+53	Lt	609		42			1	C.B. at Sta. 182+53, Pipe at Drive Sta. 181+44 (Sta. 186+47)	
15-D	193+79	205+30	Rt	1126		21			2	C.B. at Sta. 200+00, Pipe at Drive Sta. 197+00	
16-D	193+81	205+30	Lt	1124		21			2	C.B. at Sta. 200+00, C.B. at Sta. 205+30, Pipe at Drive Sta. 197+00	
17-D	206+50	207+00	Rt	49					1	C.B. at Sta. 206+50	
18-D	206+50	207+00	Lt	49					1	C.B. at Sta. 206+50	
Totals.				2957	598	1610	84		63	10	

STRUCTURES 20' SPAN & UNDER "C"

Structure Number and Station	Data on Existing Structure	Proposed Work	Item E-2 Structure Excavation (unclass.) Cu.Yds.		Item I-6 Pipe Removed Delivered And Relaid - Lin. Ft.		Item S-22 Removal of Portions of Existing Masonry Cu.Yds.		Item S-27 - Pipe for Roadway Culvert Lin. Ft.		Item I-8 Catch Basins	
			No.	16'	No.	15'	No. 1-2	Each				
8-C 193+79.2	Type: C.I.P. Culvert with Conc. Hdws. Size: 16' x 24' Condition: Poor.	Remove existing 16' C.I.P., clean, deliver and relay at sta. 221+26.7, Structure 9-C. Build 15' x 48' Pipe Culvert, 2 Std. No. 1-2 Catch Basins and make all connections. Remove and dispose of necessary portions of existing concrete headwalls.	18	24	1.5	48		2				
Totals.			18	24	1.5	48		2				



S.H - 310 SEC. "F-1" WILLIAMS COUNTY.



**ROADWAY DRAINAGE**

Ref. No.	Station		Rt. or Lt.	Pipe for Roadway Drainage ~ Lin. Ft.				Roadway Pipe Under Drives ~ Lin. Ft.				Catch Basins No. 2 Each	REMARKS
	From	To		6"	8"	10"	12"	6"	8"	10"	12"		
19-D	207+00	214+01	Rt.	699								1	C.D. at Sta. 214+00
20-D	207+00	212+41	Lt.	539								1	C.D. at Sta. 212+40
21-D	214+01	221+25	Rt.		724								
22-D	212+41	221+27	Lt.		865					21			
23-D	221+28	223+42	Lt.				214						
<b>Totals</b>				1238	1589		214			21		2	

**STRUCTURES 20 FT. SPAN AND UNDER 'C'**

Structure Number and Station	Data of Existing Structure	Proposed Work	Item E-2 Structure Excavation (Uncl.) cu. Yds.				Item I-6, Pipe removed, cleaned and relaid. Lin. Ft.		Item I-8 Catch Basin No. 1-2 Each		Item S-22 Removal of portions of existing masonry cu. Yds.
			22	26	2	1.5					
9-C 221+26.7	Type: C.I.P. Culvert with Concrete Hdws Size: 16" x 26" Condition: Poor	Remove and dispose of existing concrete headwalls. Remove, clean, and relay 26" x 16" C.I.P. to new grade line. Build 2 std. No. 1-2 Catch Basins and make all connections.	22	26	2	1.5					
<b>Totals</b>			22	26	2	1.5					

**SUMMARY OF ROADWAY DRAINAGE**

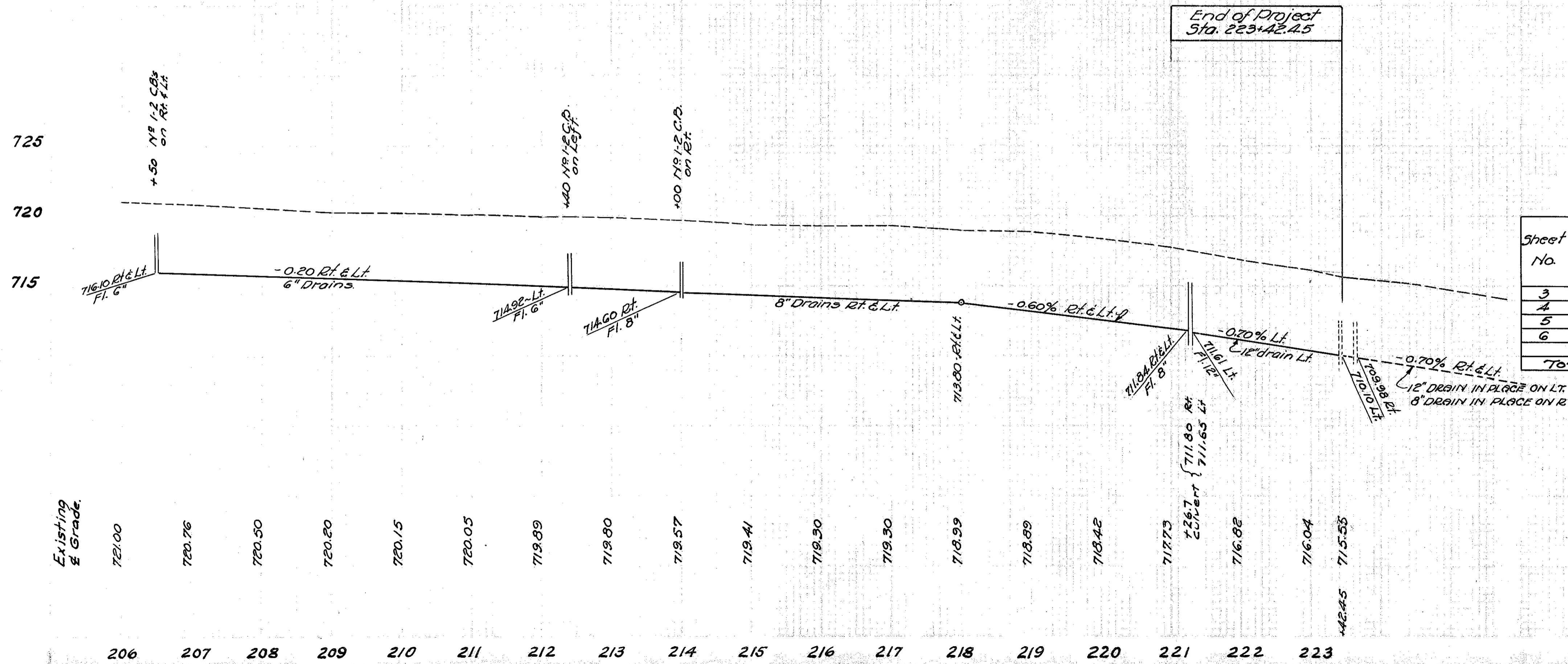
SHEET NO.	Ref. Nos.	Pipe for Roadway Drainage ~ Lin. Ft.				Roadway Pipe Under Drives ~ Lin. Ft.				Catch Basins No. 1-2 Each	10" x 8" Stone Drains (No. 2) Lin. Ft.	4" Pipe for Underdrains Incl. Porous Backfill Lin. Ft.
		6"	8"	10"	12"	6"	8"	10"	12"			
3	10-AD	506	425						1			
4	50-11-D	994	1895	347			63		5			
5	18-D-18-D	2957	598	1610		84	63		10			
6	19-D-23-D	1238	1589	214			21		2			
<b>TOTALS</b>		5695	4507	2157	214	84	84	63	18	1200	1200	

Note: Pipe Underdrains and No. 2 Stone Drains shall be installed where directed by the Engineer.

**SUMMARY OF STRUCTURES ~ 20 FT. SPAN AND UNDER**

Sheet No.	Ref. Nos.	C.D. removed & disposed of Each	E-2 Structure Excav. (Uncl.) Cu. Yds.	I-6, Pipe for Roadway Culverts Lin. Ft.			I-8 Catch Basins Each	I-6, Pipe removed cleaned & relaid Lin. Ft.	I-6, Pipe removed & stored Lin. Ft.						I-6, Pipe removed Delivered & Relaid - Lin. Ft.	S-22, Removal of portions of masonry Cu. Yds.
				12"	15"	24"			6"	8"	10"	12"	15"	18"		
3	1-C-2-C	1	53	96			4									
4	3-C-7-C		177	156	108	52	2									
5	8-C		18	48			2							24	1.5	
6	9-C		22				2	26							1.5	
<b>TOTALS</b>		1*	270	252	156	52	12	26	52	63	28	23	52	32	24	3.0

\* Note - Payment for Removal and Disposal of existing Catch Basin is included in the price bid per cu. yd. for the Item E-2, "Structure Excavation (Unclassified)".



8-4 00  
0-2