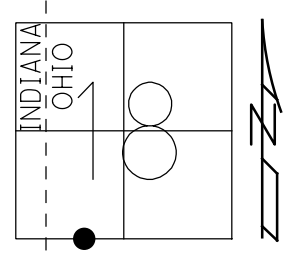


O.D.O.T. DISTRICT 2 SURVEY OFFICE (USE ONLY)

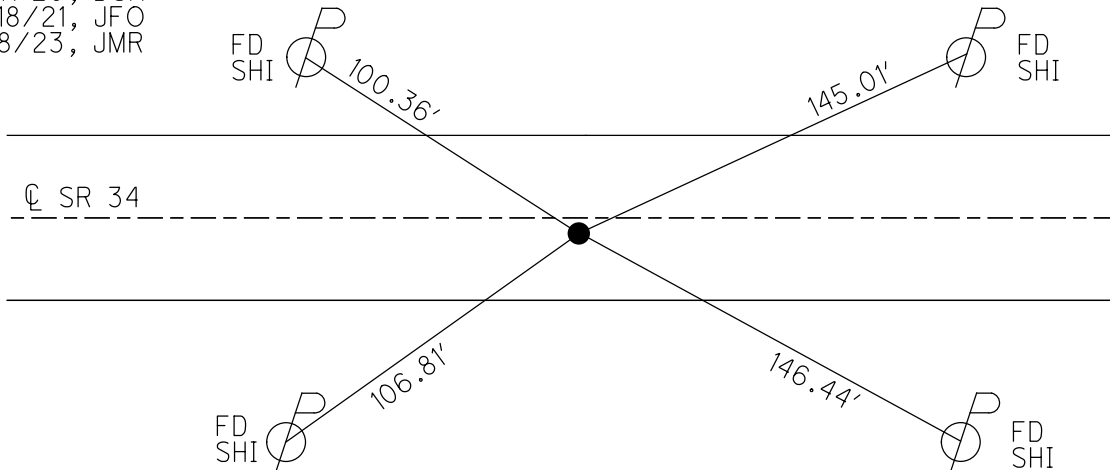
PERSONNEL _____ REFERENCE NO. 1 B SHEET 3 OF 25
 NOTES RHOADES DATE 5/4/12 ROUTE SR 34
 H.C. AUBLE WEATHER SUNNY COUNTY WILLIAMS
 R.C. MAHLER TEMP. 75° TOWNSHIP FLORENCE
 DWG BY NIESE PID PAVE TRAIN SECTION 18
 T 7 N R 1 E

TYPE MONUMENT MAG/WASHER
 ON SURFACE - ~~BELOW~~ ON
 OFFSET \varnothing PAVEMENT 2.7' ~~LT~~ : RT
7.7' TO RT EDGE PAVEMENT
 STATION: 9+95.06

HORZ.DATUM: NAD83 2011 GEOID: NAVD88 2012A
 GRID: NORTHING: 696790.474 EASTING: 1338713.819



RECORD
 SET P.K.NAIL
 6/18/96, SAH
 FD P.K./WASHER
 1/26/11, MC
 FD P.K.SHANK
 5/4/12, SAH
 SET MAG/WASHER
 8/24/12, SAH
 FD MAG/WASHER
 REFB1
 8/7/20, DSA
 8/18/21, JFO
 3/8/23, JMR

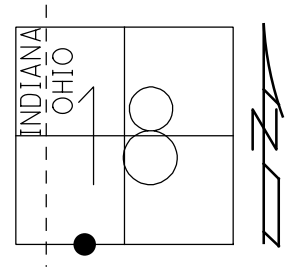


O.D.O.T. DISTRICT 2 SURVEY OFFICE (USE ONLY)

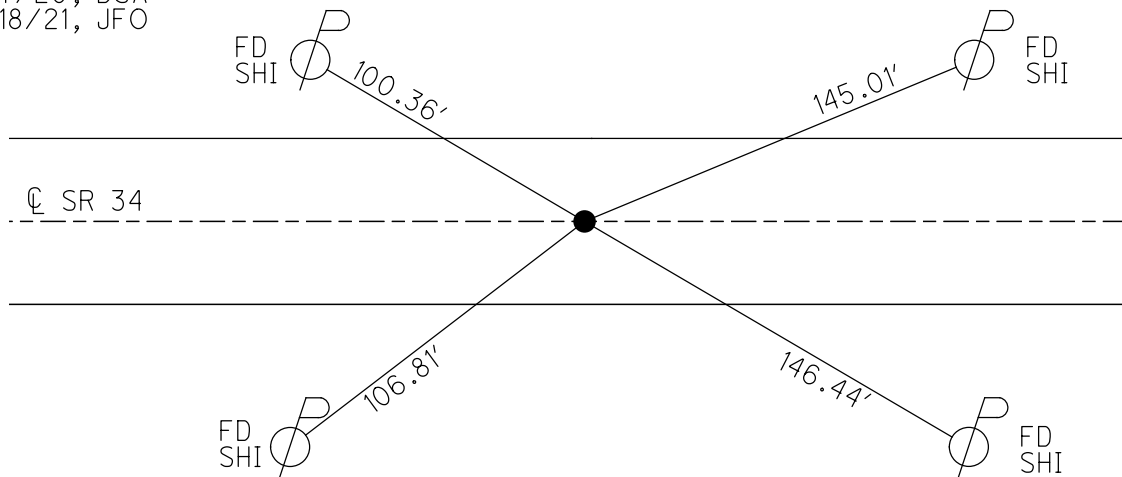
PERSONNEL _____ REFERENCE NO. 1 B SHEET 3 OF 25
 NOTES RHOADES DATE 5/4/12 ROUTE SR 34
 H.C. AUBLE WEATHER SUNNY COUNTY WILLIAMS
 R.C. MAHLER TEMP. 75° TOWNSHIP FLORENCE
 DWG BY NIESE PID PAVE TRAIN SECTION 18
 T 7 N R 1 E

TYPE MONUMENT MAG/WASHER
 ON SURFACE - ~~BELOW~~ ON
 OFFSET \varnothing PAVEMENT 2.7' ~~LT~~ : RT
7.7' TO RT EDGE PAVEMENT
 STATION: 9+95.06

HORIZ.DATUM: NAD83 2011 GEOID: NAVD88 2012A
 GRID: NORTHING: 696790.474 EASTING: 1338713.819



RECORD
 SET P.K.NAIL
 6/18/96, SAH
 FD P.K./WASHER
 1/26/11, MC
 FD P.K.SHANK
 5/4/12, SAH
 SET MAG/WASHER
 8/24/12, SAH
 FD MAG/WASHER
 REFB1
 8/7/20, DSA
 8/18/21, JFO



O.D.O.T. DISTRICT 2 SURVEY OFFICE (USE ONLY)

PERSONNEL

REFERENCE NO. 1 B

SHEET 3 OF 25

NOTES HUSS

DATE 5/4/12

ROUTE SR 34

H.C. CANTERBURY

WEATHER FAIR

COUNTY WILLIAMS

R.C. HARBAUGH

TEMP. 75°

TOWNSHIP FLORENCE

SECTION 18

T 7 N R 1 E

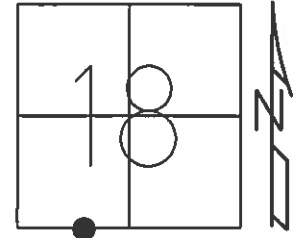
TYPE MONUMENT P.K.SHANK

~~ON SURFACE~~ - BELOW 0.1'

~~LEFT~~ - Q PAV'T - RIGHT 2.7'

7.7' TO RT EDGE PAVEMENT

S.L.M. 16+41



Grid: Northing: 696790.383 Easting: 1338713.826

SET P.K.NAIL
TO SURFACE
6/18/96, SAH

FD P.K./WASHER
1/26/11, MC
GPS, REFB1
1/27/11, MC

SET MAG/WASHER
8/24/12, SAH

