

O.D.O.T. DISTRICT 2 SURVEY OFFICE (USE ONLY)

PERSONNEL

REFERENCE NO. 28 D

SHEET 38 OF 55

NOTES RHOADES

DATE 7-1-20

ROUTE SR 34

H.C. AUBLE

WEATHER SUNNY

COUNTY WILLIAMS

R.C. MAHLER

TEMP. 81°F

TOWNSHIP CENTER

LEU

SECTION 11

DWG BY MAHLER PID PAVETRAIN

T 6 N R 2 E

TYPE MONUMENT MAG/WASHER

ON SURFACE - ~~BELOW~~ ON

OFFSET ☉ PAVEMENT ON LT : RT

- TO - EDGE PAVEMENT

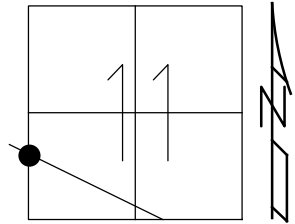
STATION: 707+94

HORZ. DATUM: NAD83 2011

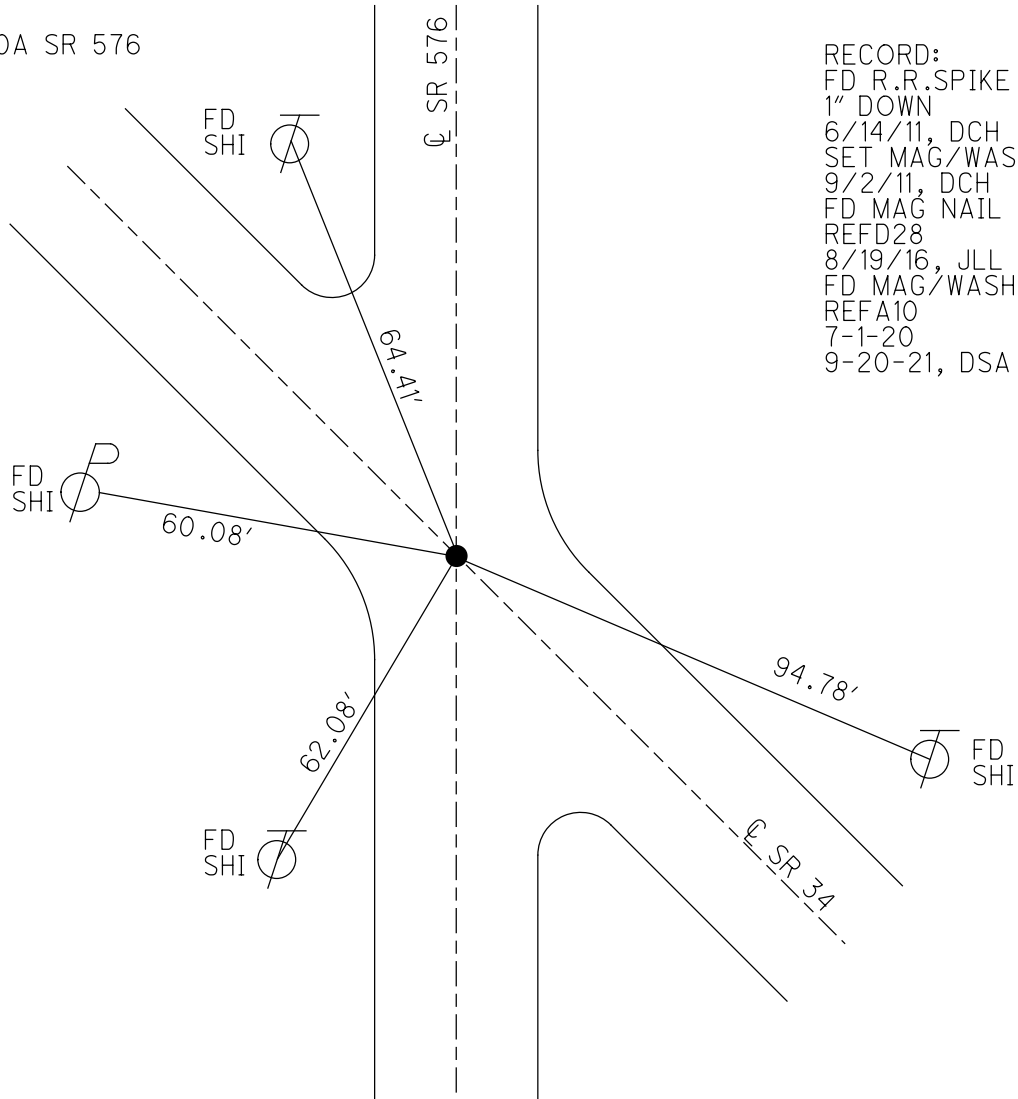
GEOID: NAVD88 2018

GRID: NORTHING: 671167.414

EASTING: 1389631.048



NOTE: REF10A SR 576

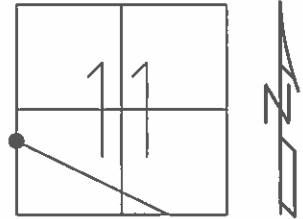


RECORD:
 FD R.R. SPIKE
 1" DOWN
 6/14/11, DCH
 SET MAG/WASHER
 9/2/11, DCH
 FD MAG NAIL
 REF28
 8/19/16, JLL
 FD MAG/WASHER
 REF10
 7-1-20
 9-20-21, DSA

O.D.O.T. DISTRICT 2 SURVEY OFFICE (USE ONLY)

PERSONNEL	REFERENCE NO.	28 D	SHEET	38	OF	55
NOTES	LEU	DATE	04/08/16	ROUTE	SR 34	
H.C.	HOMAN	WEATHER	CLOUDY	COUNTY	WILLIAMS	
R.C.	LEU	TEMP.	32°	TOWNSHIP	CENTER	
				SECTION	11	
				T. 6 N	R. 2 E	

TYPE MONUMENT SM RR SPIKE
~~ON SURFACE~~ - BELOW 1"
~~LEFT - C PAV'T - RIGHT~~ ON
TO EDGE PAVEMENT
 S.L.M. 707+94, 229+55 = SR 576
 GRID: NORTHING: 671167.475 EASTING: 1389631.004



RECORD:
 SET MAG/WASHER
 09/02/11, DCH
 FD MAG NAIL
 REFD28
 08/19/2016, JLL
 NOT COVERED

