

O.D.O.T. DISTRICT 2 SURVEY OFFICE (USE ONLY)

PERSONNEL

REFERENCE NO. 35 A

SHEET 1 OF 17

NOTES LOEHRKE

DATE 4/20/94

ROUTE SR 34

H.C. CANTERBURY

WEATHER CLOUDY

COUNTY WILLIAMS

R.C. HERMILLER

TEMP. 55°

TOWNSHIP PULOSKI

VOGEL

SECTION 18

DWG BY RHOADES PID _____

T 6 N R 3 E

TYPE MONUMENT MONBOX

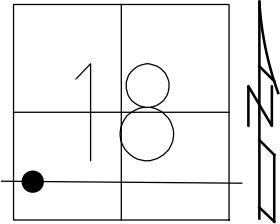
ON SURFACE - ~~BELOW~~ ON

OFFSET CL PAVEMENT ON _____ LT : RT
23.9' TO LT EDGE PAVEMENT

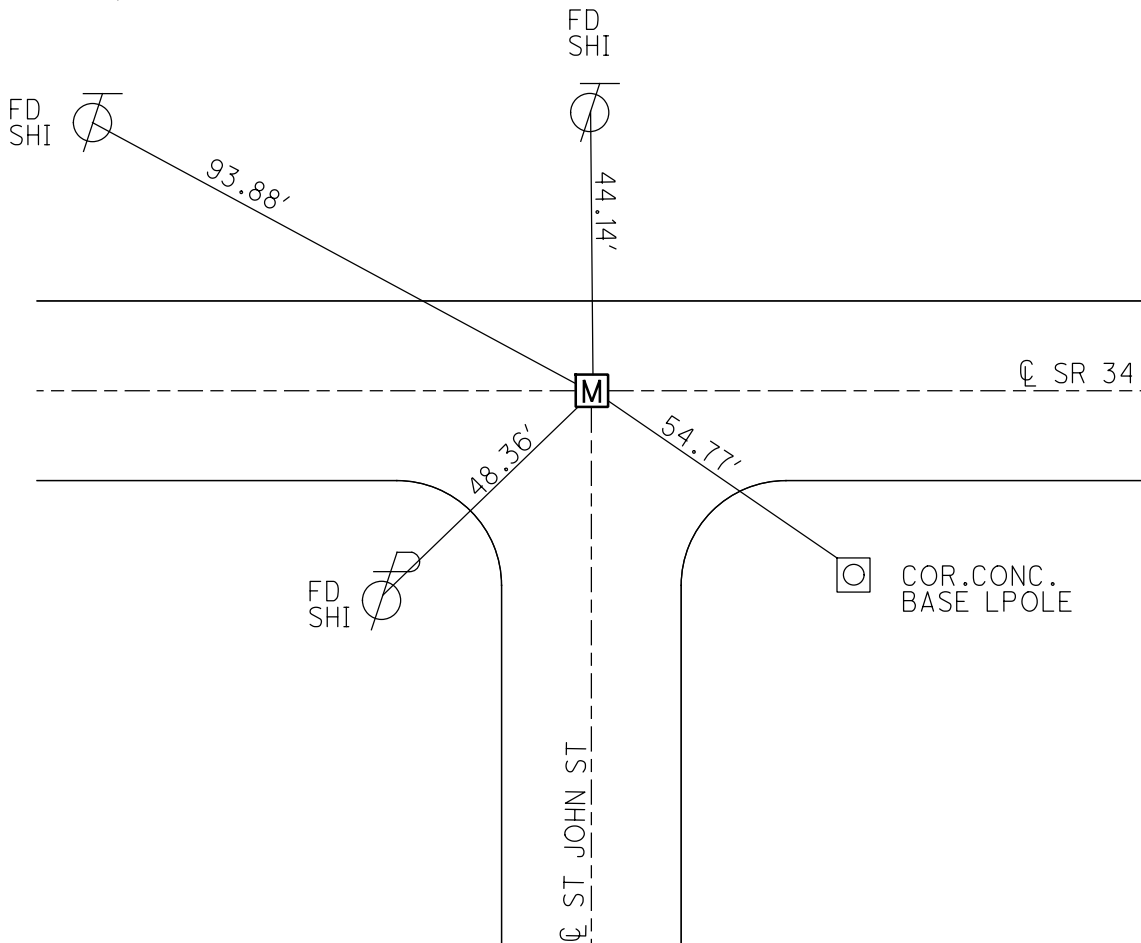
STATION: 846+42

HORIZ.DATUM: _____ GEOID: _____

GRID: NORTHING: _____ EASTING: _____



RECORD:
FD MONBOX
4/20/94, CL



O.D.O.T. DISTRICT 2 SURVEY OFFICE

PERSONNEL

REFERENCE NO. 35 A

SHEET 3 OF 19

NOTES LOHRKE

H.C. CANTERBURY

DATE 4-20-94

ROUTE S.R. 34

R.C. HERMILLER

WEATHER Nice

COUNTY WILLIAMS

VOGEL

TEMP. +55

TOWNSHIP PULOSKI

SECTION 18

T 6 N R 3 E

TYPE MONUMENT Mon. Box
 ON SURFACE - BELOW ON SURFACE
 LEFT- & PAV'T. - RIGHT & BOTH PAV'T
23.9 TO Lt EDGE PAVEMENT
 S.L.M. 846 + 42

