

O.D.O.T. DISTRICT 2 SURVEY OFFICE (USE ONLY)

PERSONNEL

REFERENCE NO. 35 B

SHEET 2 OF 17

NOTES LOEHRKE DATE 4/20/94
 H.C. CANTERBURY WEATHER CLOUDY
 R.C. HERMILLER TEMP. 55°
VOGEL

ROUTE SR 34
 COUNTY WILLIAMS
 TOWNSHIP PULOSKI
 SECTION 18

DWG BY RHOADES PID _____

T 6 N R 3 E

TYPE MONUMENT P.K.NAIL

ON SURFACE - ~~BELOW~~ ON _____

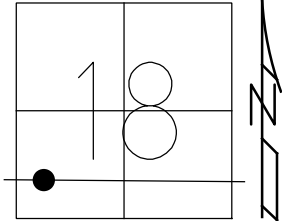
OFFSET \varnothing PAVEMENT ON _____ LT : RT

23.8' TO LT EDGE PAVEMENT

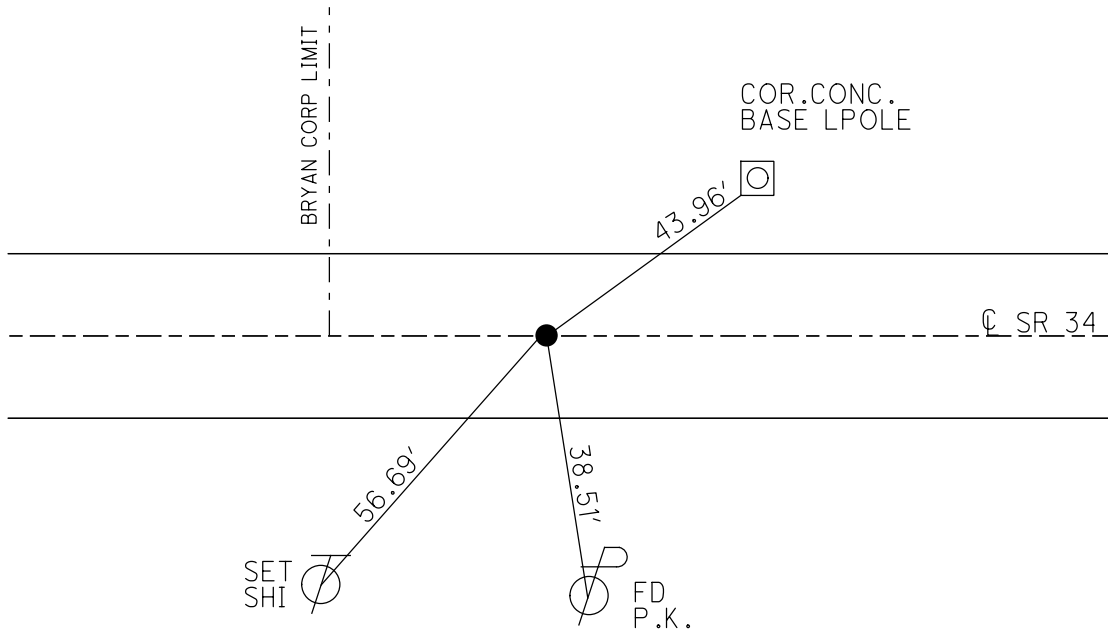
STATION: 849+55

HORZ.DATUM: _____ GEOID: _____

GRID: NORTHING: _____ EASTING: _____



RECORD: P.O.T.
 STA. 19+46.79
 FD P.K.NAIL
 4/20/94, CL



O.D.O.T. DISTRICT 2 SURVEY OFFICE

PERSONNEL

REFERENCE NO. 35 B

SHEET 4 OF 19

NOTES LOHRKE

H.C. CANTERBURY

DATE 4-20-94

ROUTE S.R. 34

R.C. HERMILLER

WEATHER Cloudy

COUNTY WILLIAMS

Vogel

TEMP. +55

TOWNSHIP PULASKI

SECTION 18

T. 6 N. R. 3 E

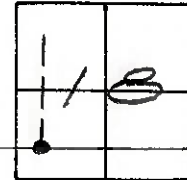
TYPE MONUMENT P.K.

ON SURFACE - ~~BELOW~~ Yes

~~LEFT - & PAV'T.~~ - ~~RIGHT~~ Yes

23.8 TO Lt EDGE PAVEMENT

S.L.M. 849+55



RECORD POT.
19+46.79



BRYAN W/CORR. LINE

