

O.D.O.T. DISTRICT 2 SURVEY OFFICE (USE ONLY)

PERSONNEL \_\_\_\_\_ REFERENCE NO. 35 D SHEET 5 OF 17  
 NOTES LOEHRKE DATE 4/20/94 ROUTE SR 34  
 H.C. CANTERBURY WEATHER NICE COUNTY WILLIAMS  
 R.C. HERMILLER TEMP. 55° TOWNSHIP PULOSKI  
VOGEL SECTION 18  
 DWG BY RHOADES PID \_\_\_\_\_ T 6 N R 3 E

TYPE MONUMENT 3" BRASS DISK

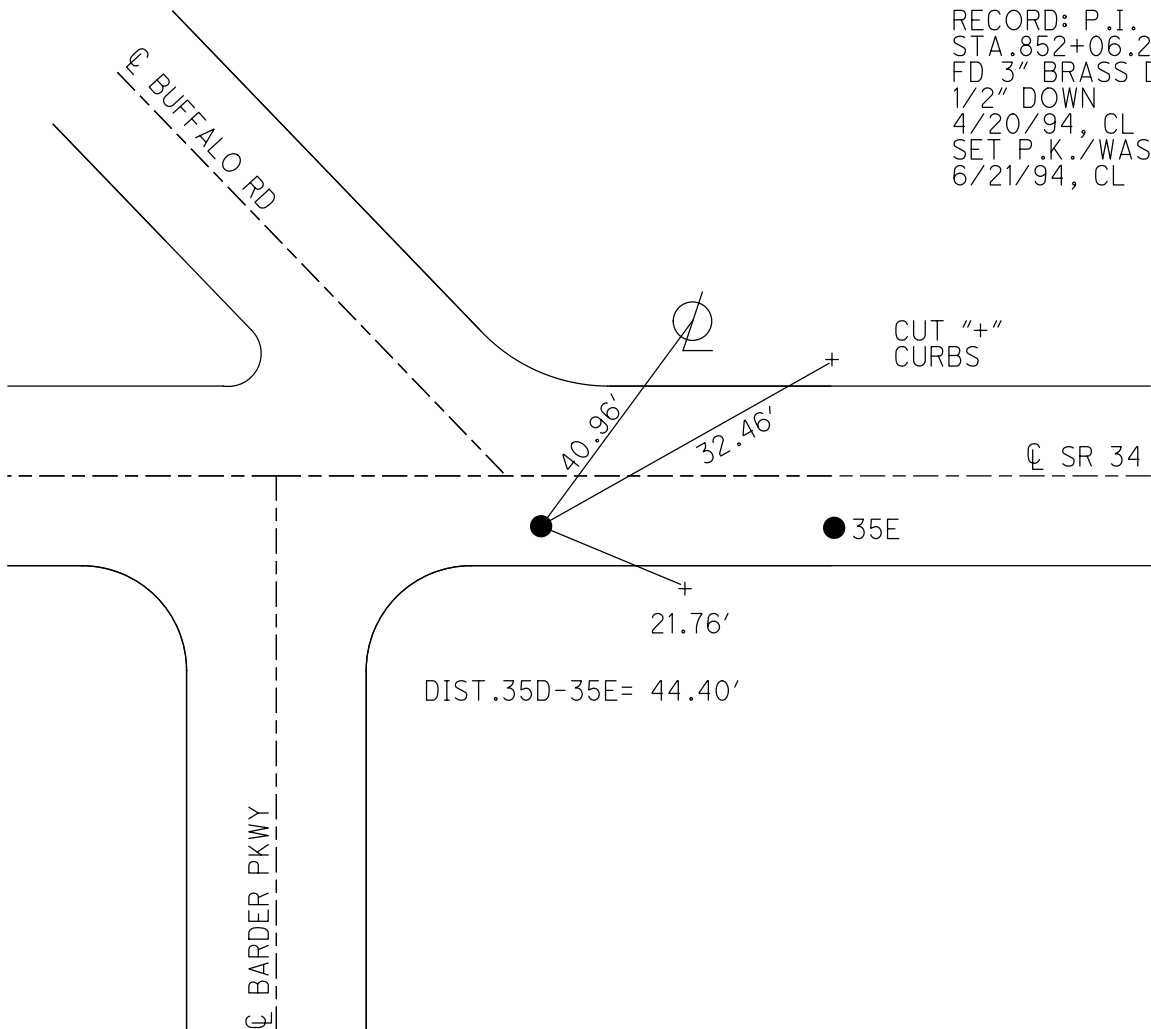
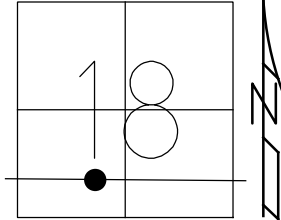
~~ON SURFACE~~ - BELOW 1/2"

OFFSET  $\odot$  PAVEMENT 7.9'  $\pm$  : RT  
14.9' TO RT EDGE PAVEMENT

STATION: 859+72

HORZ. DATUM: \_\_\_\_\_ GEOID: \_\_\_\_\_

GRID: NORTHING: \_\_\_\_\_ EASTING: \_\_\_\_\_



RECORD: P.I.  
 STA. 852+06.25  
 FD 3" BRASS DISK  
 1/2" DOWN  
 4/20/94, CL  
 SET P.K./WASHER  
 6/21/94, CL

# O.D.O.T. DISTRICT 2 SURVEY OFFICE

PERSONNEL

REFERENCE NO. 35 D.

SHEET 8 OF 19

NOTES LOEHRKE

H.C. CANTERBURY

R.C. HERMILLER

VOGEL

DATE 4-20-94

WEATHER Nice

TEMP. +55

Set PK/WASHER  
6-21-94

ROUTE S.R. 34

COUNTY WILLIAMS

TOWNSHIP PULASKI

SECTION 18

T 6 N R 3 E

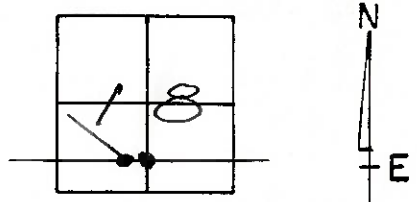
TYPE MONUMENT (A) = 3" BRASS DISKS  
(B) = 1/2" Below

ON SURFACE - BELOW 1/2" Below

LEFT - 17.5 PAV'T. - RIGHT 7.9' Rt

TO Rt EDGE PAVEMENT

S.L.M. A: 859+72 B: 860+16



Record A - P.I. Sta 852+06.25

Record B - P.I. Sta 852+50.67  
 $\Delta = 0^{\circ} 05' 30''$  Rt

LINE - ?  
LOCATION

