

O.D.O.T. DISTRICT 2 SURVEY OFFICE (USE ONLY)

PERSONNEL

REFERENCE NO. 35 E

SHEET 6 OF 17

NOTES LOEHRKE
 H.C. CANTERBURY
 R.C. HERMILLER
VOGEL

DATE 4/20/94
 WEATHER NICE
 TEMP. 55°

ROUTE SR 34
 COUNTY WILLIAMS
 TOWNSHIP PULOSKI
 SECTION 18

DWG BY RHOADES PID _____

T 6 N R 3 E

TYPE MONUMENT 3" BRASS DISK

~~ON SURFACE~~ - BELOW 1/2"

OFFSET \odot PAVEMENT 7.9' \pm : RT

14.9' TO RT EDGE PAVEMENT

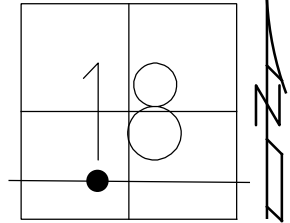
STATION: 860+16

HORZ. DATUM: _____

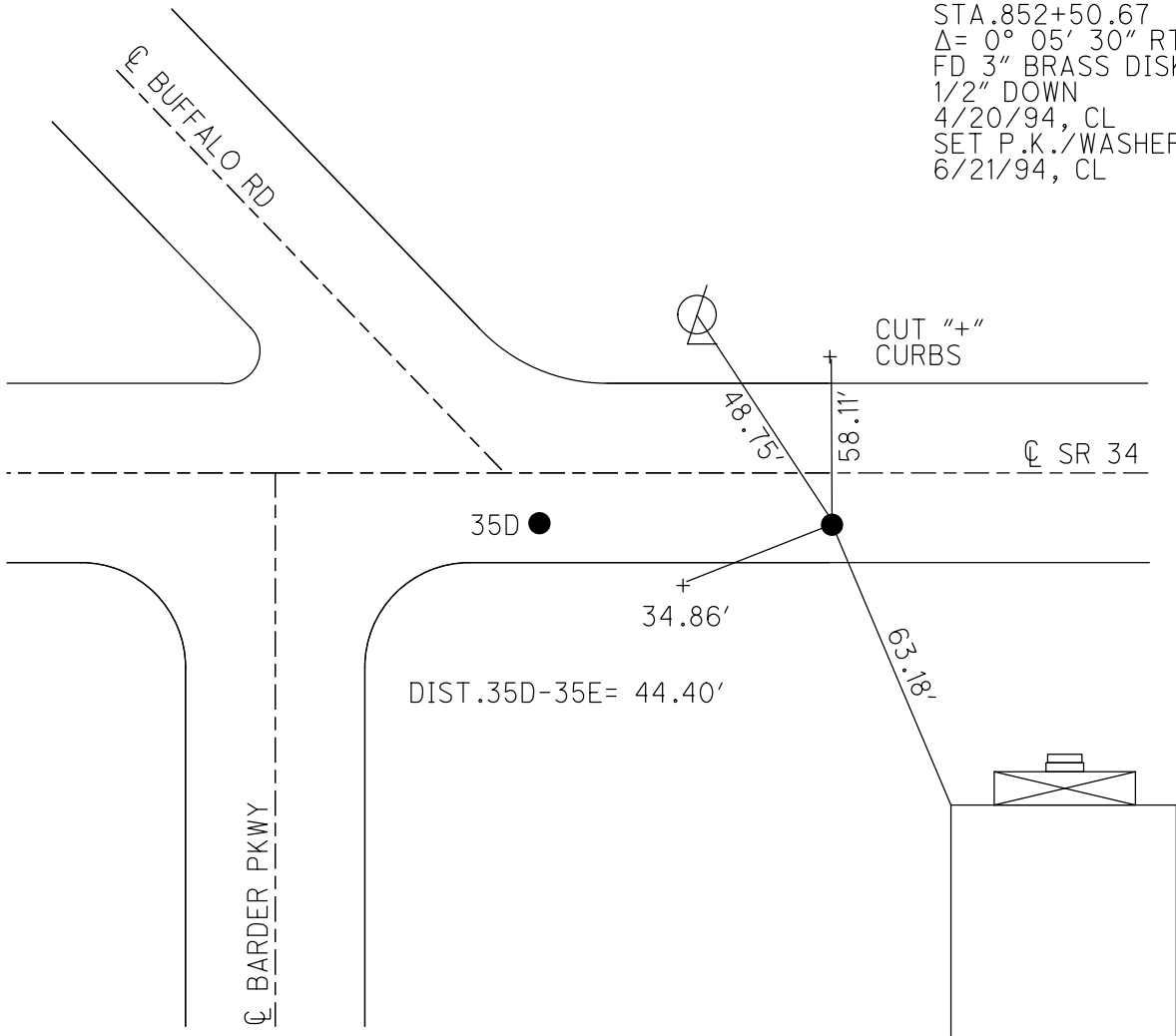
GEOID: _____

GRID: NORTHING: _____

EASTING: _____



RECORD: P.I.
 STA. 852+50.67
 $\Delta = 0^\circ 05' 30''$ RT
 FD 3" BRASS DISK
 1/2" DOWN
 4/20/94, CL
 SET P.K./WASHER
 6/21/94, CL



O.D.O.T. DISTRICT 2 SURVEY OFFICE

PERSONNEL

REFERENCE NO. 35 D.
35 E

SHEET 8 OF 19

NOTES LOEHRKE

H.C. CANTERBURY

R.C. HERMILLER

VOGEL

DATE 4-20-94

WEATHER Nice

TEMP. +55

Set PK/WASHER
6-21-94

ROUTE S.R. 34

COUNTY WILLIAMS

TOWNSHIP PULASKI

SECTION 18

T 6 N 3 E

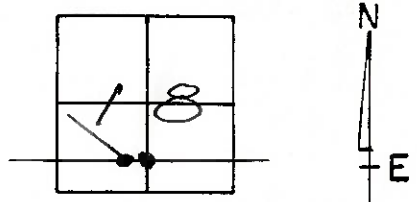
TYPE MONUMENT (A) = 3" BRASS DISKS
(B) = 1/2" Below

ON SURFACE - BELOW 1/2" Below

LEFT - 17.5 PAV'T. - RIGHT 7.9' Rt

17.5 TO Rt EDGE PAVEMENT

S.L.M. A: 859+72 B: 860+16



Record A - P.I. Sta 852+06.25

Record B - P.I. Sta 852+50.67
 $\Delta = 0^\circ - 05' - 30''$ Rt

LINE - ?
LOCATION

