

O.D.O.T. DISTRICT 2 SURVEY OFFICE (USE ONLY)

PERSONNEL

REFERENCE NO. 35 F

SHEET 7 OF 17

NOTES LOEHRKE DATE 4/20/94
 H.C. CANTERBURY WEATHER NICE
 R.C. HERMILLER TEMP. 55°
VOGEL

ROUTE SR 34
 COUNTY WILLIAMS
 TOWNSHIP PULOSKI
 SECTION 18
T 6 N R 3 E

DWG BY RHOADES PID _____

TYPE MONUMENT 1/2" IPIN

ON SURFACE - ~~BELOW~~ ON _____

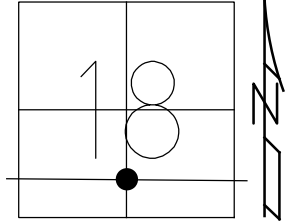
OFFSET \odot PAVEMENT 8.2' ~~RT~~ : RT

30' TO LT EDGE PAVEMENT

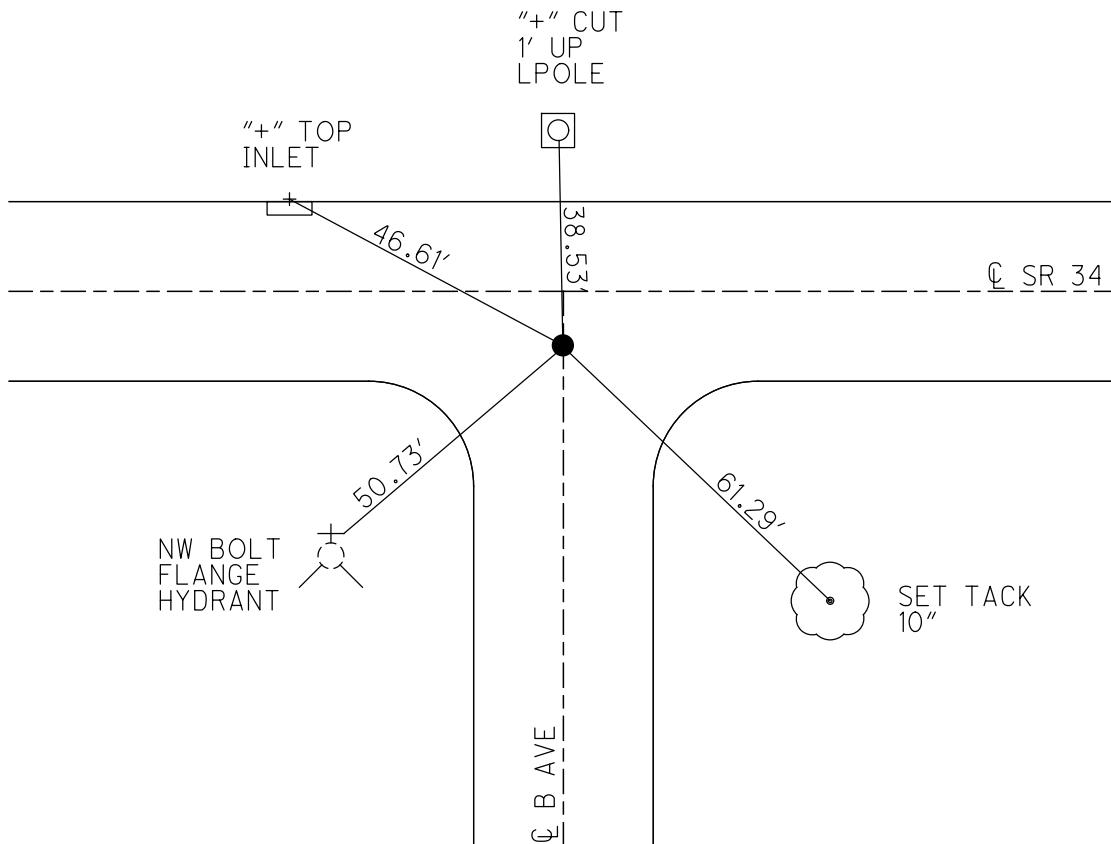
STATION: 861+85

HORZ. DATUM: _____ GEOID: _____

GRID: NORTHING: _____ EASTING: _____



RECORD: P.O.T.
 STA. 854+18.87
 FD 1/2" IPIN
 4/20/94, CL
 SET P.K./WASHER
 6/21/94, CL



O.D.O.T. DISTRICT 2 SURVEY OFFICE

PERSONNEL

REFERENCE NO. 35 F

SHEET 9 OF 19

NOTES LOEHARKE

H.C. CANTERBURY

DATE 4-20-94

ROUTE S.R. 34

R.C. HERMILLER

WEATHER Nice

COUNTY WILLIAMS

VOGEL

TEMP. +55

TOWNSHIP PULASKI

SECTION 18

T 6 N R 3 E

TYPE MONUMENT 1/2" IRON PIN

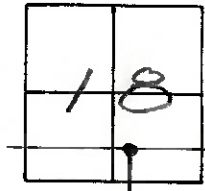
Set P.K./WASHER
8-21-94

ON SURFACE - BELOW Yes

LEFT - & PAV'T. - RIGHT B.2' RT

30.0 TO LT EDGE PAVEMENT

S.L.M. B61 + B5



RECORD P.O.T. Sta 854+18.87

