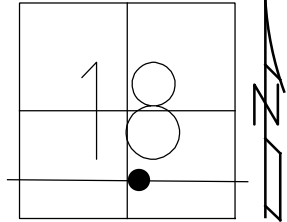


O.D.O.T. DISTRICT 2 SURVEY OFFICE (USE ONLY)

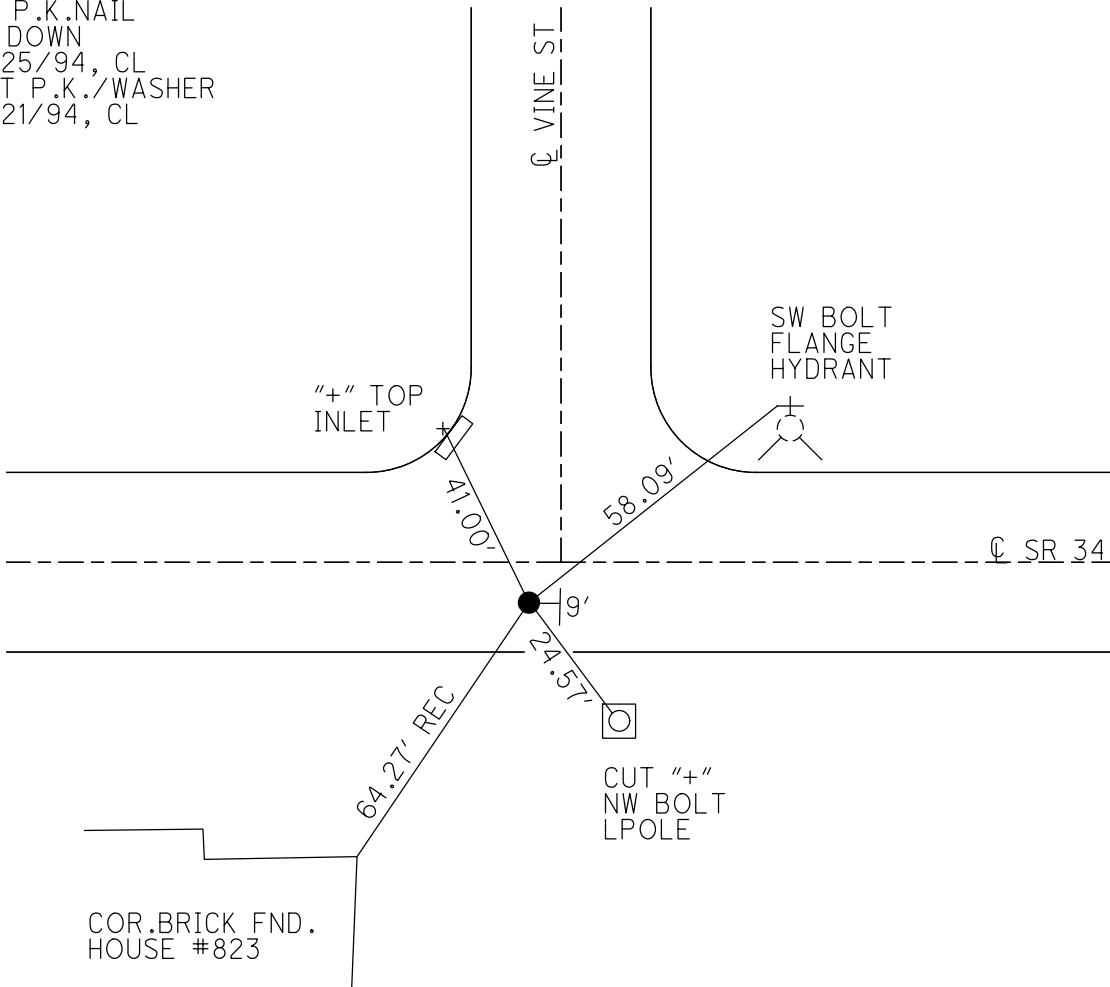
PERSONNEL _____ REFERENCE NO. 35 H SHEET 9 OF 17
 NOTES LOEHRKE DATE 4/25/94 ROUTE SR 34
 H.C. VOGEL WEATHER NICE COUNTY WILLIAMS
 R.C. LOEHRKE TEMP. 75° TOWNSHIP PULOSKI
 DWG BY RHOADES PID _____ SECTION 18
 T 6 N R 3 E

TYPE MONUMENT P.K.NAIL
~~ON SURFACE~~ - BELOW 4"
 OFFSET C PAVEMENT 7.6' ~~ET~~ : RT
14' TO RT EDGE PAVEMENT
 STATION: 866+79



HORIZ.DATUM: _____ GEOID: _____
 GRID: NORTHING: _____ EASTING: _____

RECORD:
 FD P.K.NAIL
 4" DOWN
 4/25/94, CL
 SET P.K./WASHER
 6/21/94, CL



O.D.O.T. DISTRICT 2 SURVEY OFFICE

PERSONNEL

REFERENCE NO. 35 H

SHEET 11 OF 19

NOTES LOEHRKE

H.C. VOGEL

R.C. LOEHRKE

DATE 4-25-94

WEATHER Nice

TEMP. +75

ROUTE S.R. 34

COUNTY WILLIAMS

TOWNSHIP PULASKI

SECTION 18

T 6 N R 3 E

Set P.K./WASHER
6-21-94

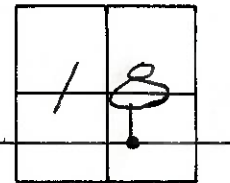
TYPE MONUMENT P.K.

ON SURFACE - BELOW 4"

LEFT - & PAV'T. - RIGHT 7.6

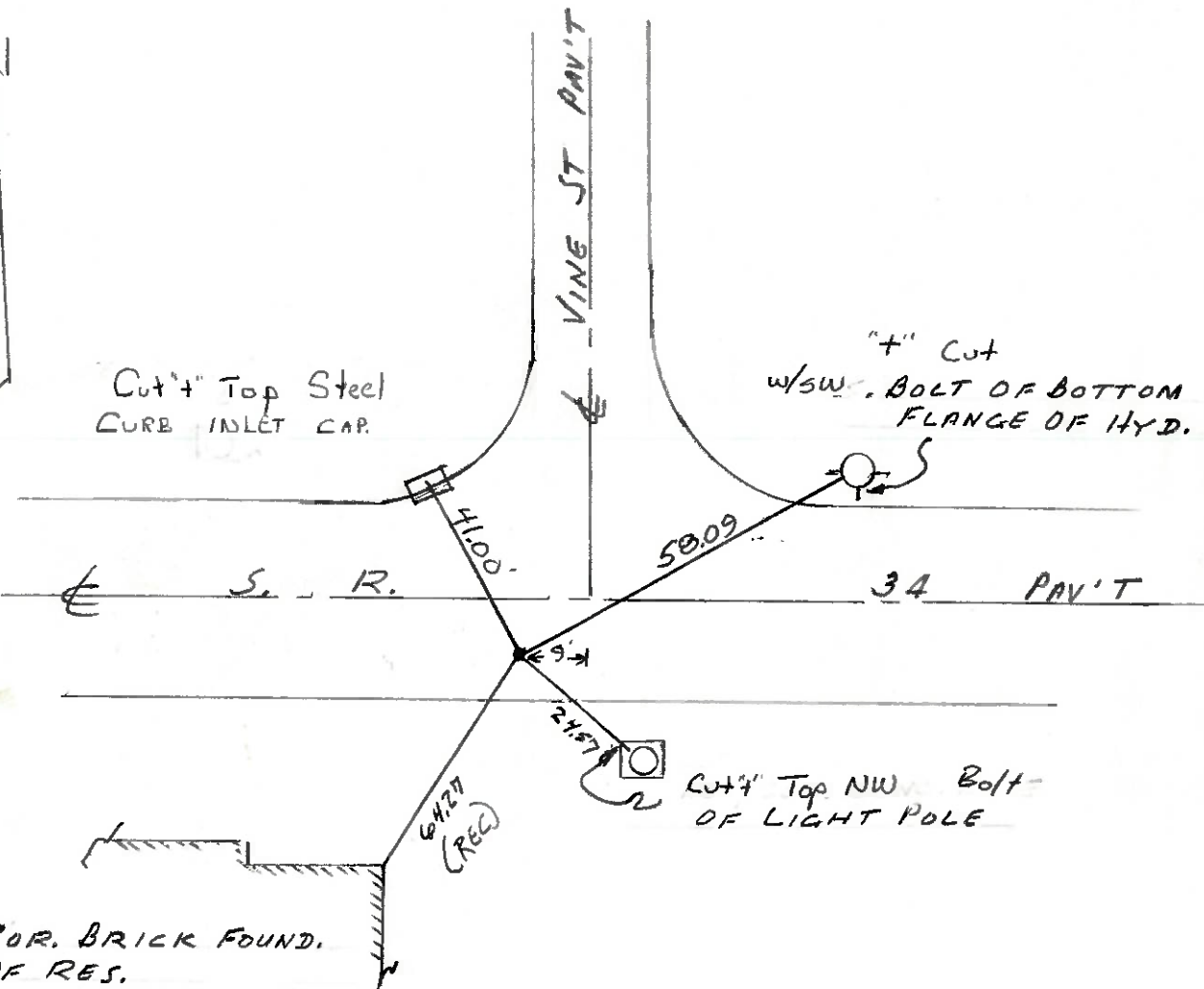
14' TO Rt EDGE PAVEMENT

S.L.M. 866 +79



Cut 4" Top Steel
CURB INLET CAP.

4" Cut
w/SW. BOLT OF BOTTOM
FLANGE OF HYD.



COR. BRICK FOUND.
OF RES.
HOUSE No. 823