

O.D.O.T. DISTRICT 2 SURVEY OFFICE (USE ONLY)

PERSONNEL

REFERENCE NO. 35 I

SHEET 10 OF 17

NOTES LOEHRKE DATE 4/27/94
 H.C. CANTERBURY WEATHER WINDY
 R.C. HERMILLER TEMP. 68°
VOGEL

ROUTE SR 34
 COUNTY WILLIAMS
 TOWNSHIP PULOSKI
 SECTION 18

DWG BY RHOADES PID _____

T 6 N R 3 E

TYPE MONUMENT 1/2" BRASS PIN

ON SURFACE - ~~BELOW~~ ON _____

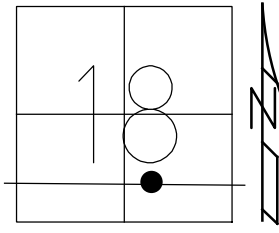
OFFSET \varnothing PAVEMENT 8.2' ~~LT~~ : RT

- TO - EDGE PAVEMENT

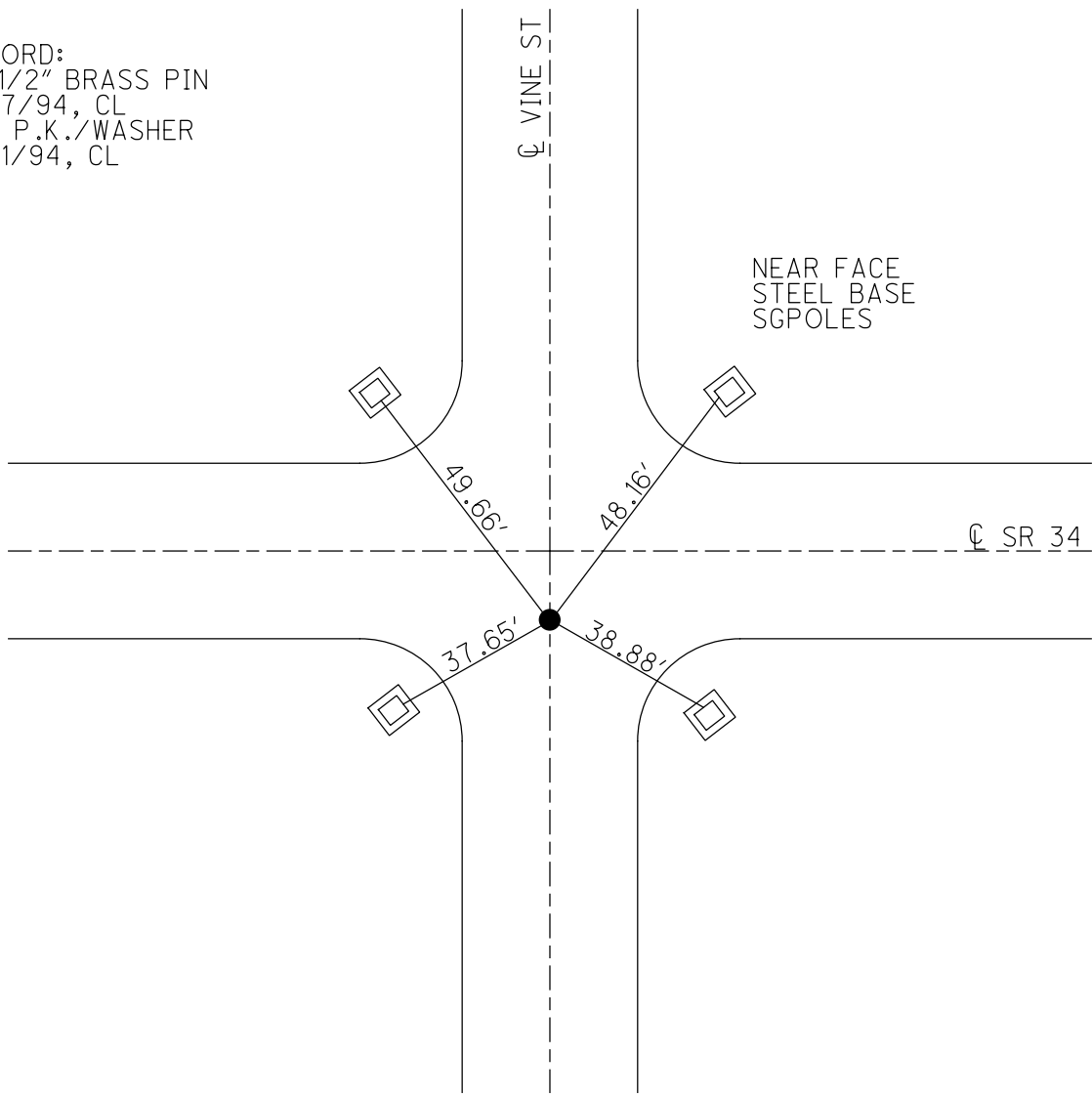
STATION: 870+10

HORZ.DATUM: _____ GEOID: _____

GRID: NORTHING: _____ EASTING: _____



RECORD:
 FD 1/2" BRASS PIN
 4/27/94, CL
 SET P.K./WASHER
 6/21/94, CL



O.D.O.T. DISTRICT 2 SURVEY OFFICE

PERSONNEL

REFERENCE NO. 35 I

SHEET 12 OF 19

NOTES LOHRKE

H.C. CANTERBURY

R.C. HERMILLER

VOGEL

DATE 4-27-94

WEATHER WINDY

TEMP. 76B

set P.K./WASHER
6-21-94

ROUTE S.R. 34

COUNTY WILLIAMS

TOWNSHIP PULASKI

SECTION 18

T6 N R 3 E

TYPE MONUMENT 1/2" BRASS ROD

ON SURFACE - BELOW YES

LEFT - ~~E~~ PAV'T. - RIGHT B.2

— TO — EDGE PAVEMENT

S.L.M. 870+10

