

O.D.O.T. DISTRICT 2 SURVEY OFFICE (USE ONLY)

PERSONNEL

REFERENCE NO. 35 L

SHEET 13 OF 17

NOTES LOEHRKE
 H.C. CANTERBURY
 R.C. HERMILLER
VOGEL

DATE 4/27/94
 WEATHER WINDY
 TEMP. 68°

ROUTE SR 34
 COUNTY WILLIAMS
 TOWNSHIP PULOSKI
 SECTION 18
T 6 N R 3 E

DWG BY RHOADES PID _____

TYPE MONUMENT P.K.NAIL

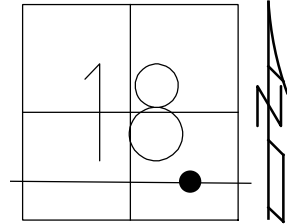
ON SURFACE - ~~BELOW~~ ON _____

OFFSET \odot PAVEMENT 8.1" ~~ET~~ : RT
13.9' TO RT EDGE PAVEMENT

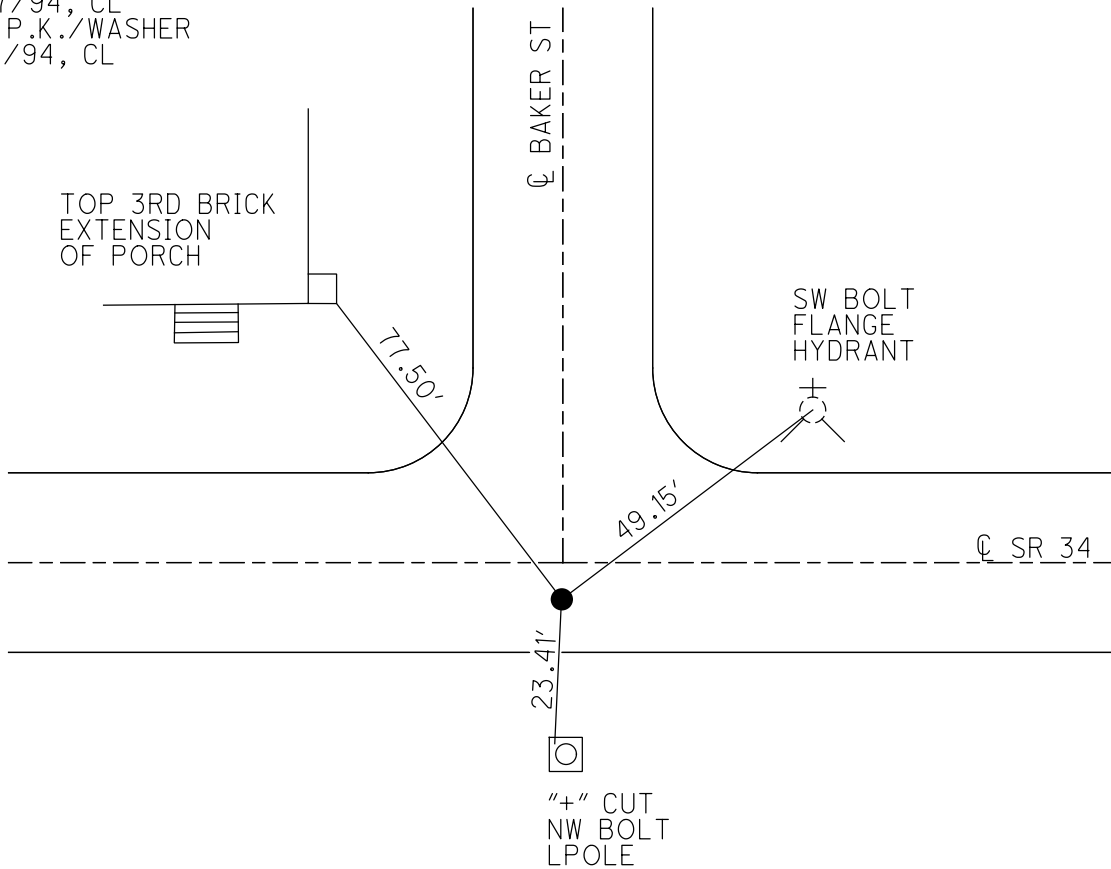
STATION: 876+79

HORIZ.DATUM: _____ GEOID: _____

GRID: NORTHING: _____ EASTING: _____



RECORD:
 FD P.K.NAIL
 4/27/94, CL
 SET P.K./WASHER
 6/21/94, CL



O.D.O.T. DISTRICT 2 SURVEY OFFICE

PERSONNEL

REFERENCE NO. 35L

SHEET 15 OF 19

NOTES LOEHRKE

H.C. CANTERBURY

DATE 4-27-94

ROUTE S.R. 34

R.C. HERMILLER

WEATHER WINDY

COUNTY WILLIAMS

VOGEL

TEMP. +68

TOWNSHIP PULASKI

SECTION 18

T 6 N R 3 E

Set P.K. WASHCR
6-21-94

TYPE MONUMENT P.K. Nail

ON SURFACE - BELOW Yes

~~LEFT~~ - PAV'T. - RIGHT 8.1

13.9 TO Rt EDGE PAVEMENT

S.L.M. 876 + 79

