

O.D.O.T. DISTRICT 2 SURVEY OFFICE (USE ONLY)

PERSONNEL

REFERENCE NO. 35 N

SHEET 15 OF 17

NOTES LOEHRKE

DATE 4/27/94

ROUTE SR 34

H.C. CANTERBURY

WEATHER WINDY

COUNTY WILLIAMS

R.C. HERMILLER

TEMP. 68°

TOWNSHIP PULOSKI

VOGEL

SECTION 17

DWG BY RHOADES

PID _____

T 6 N R 3 E

TYPE MONUMENT MONBOX

ON SURFACE - ~~BELOW~~ ON

OFFSET \bar{C} PAVEMENT 5.6' ~~LT~~ : RT

- TO - EDGE PAVEMENT

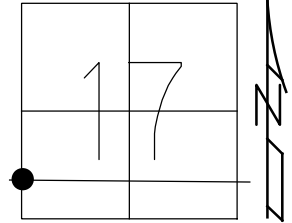
STATION: 886+63

HORZ.DATUM: _____

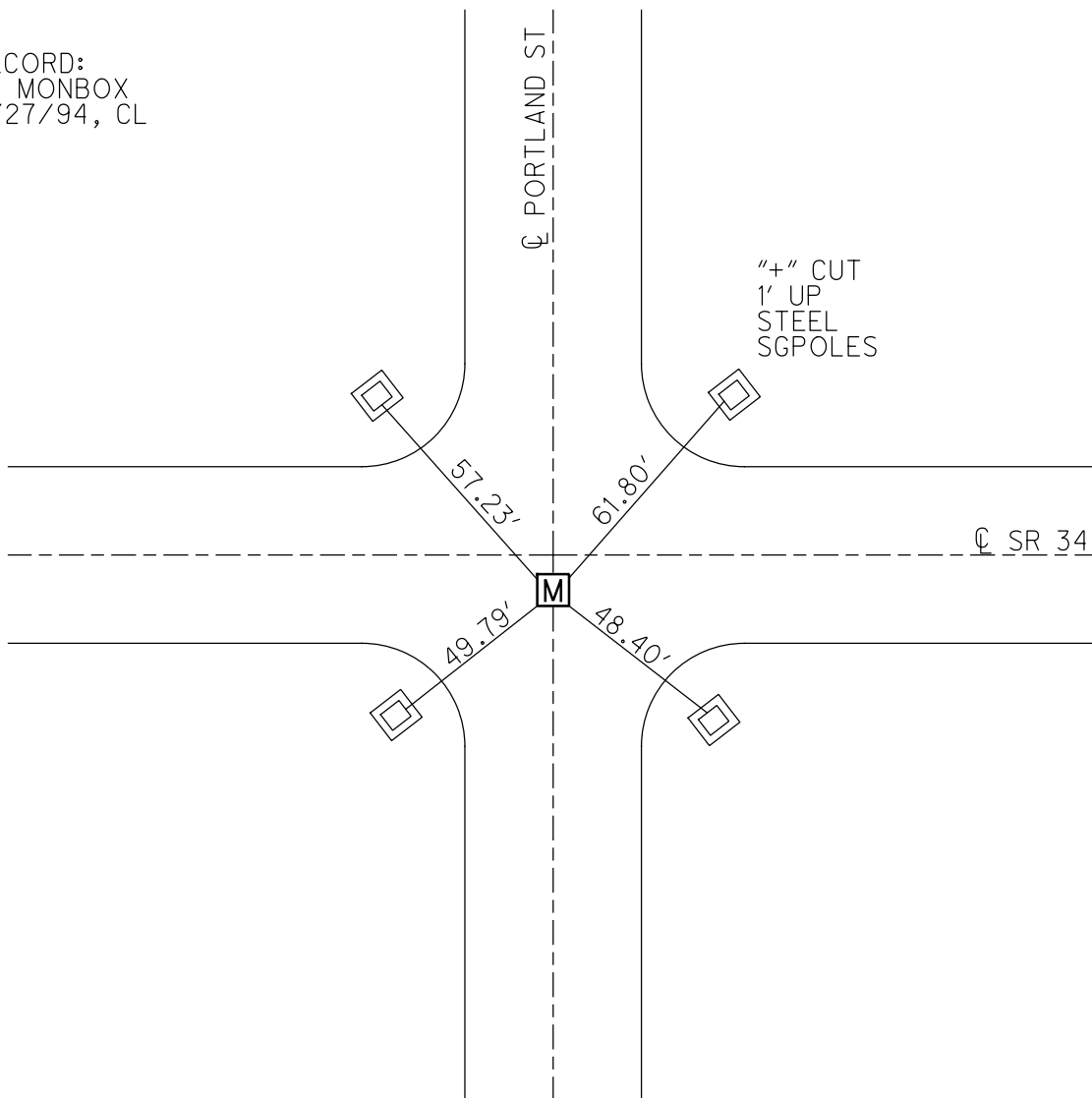
GEOID: _____

GRID: NORTHING: _____

EASTING: _____



RECORD:
FD MONBOX
4/27/94, CL



O.D.O.T. DISTRICT 2 SURVEY OFFICE

PERSONNEL

REFERENCE NO. 35 N

SHEET 17 OF 19

NOTES LOEHRKE

H.C. CANTERBURY

DATE 4-27-94

ROUTE S.R. 34

R.C. HERMILLER

WEATHER WINDY

COUNTY WILLIAMS

VOGEL

TEMP. +68

TOWNSHIP PULASKI

SECTION 17-18

T. 6 N. R. 3 E

TYPE MONUMENT MOB Box

ON SURFACE - BELOW Yes

~~LEFT~~ - RIGHT PAV'T. - RIGHT S.L.

TO EDGE PAVEMENT

S.L.M. 886+63

