

O.D.O.T. DISTRICT 2 SURVEY OFFICE (USE ONLY)

PERSONNEL

REFERENCE NO. 35 P

SHEET 17 OF 17

NOTES LOEHRKE  
H.C. CANTERBURY  
R.C. HERMILLER  
VOGEL

DATE 4/27/94  
WEATHER WINDY  
TEMP. 67°

ROUTE SR 34  
COUNTY WILLIAMS  
TOWNSHIP PULOSKI  
SECTION 17  
T 6 N R 3 E

DWG BY RHOADES PID \_\_\_\_\_

TYPE MONUMENT 5/8" BRASS PIN

ON SURFACE - ~~BELOW~~ ON

OFFSET CL PAVEMENT ON \_\_\_\_\_ LT : RT  
- TO - EDGE PAVEMENT

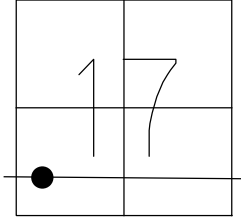
STATION: 896+12

HORZ. DATUM: \_\_\_\_\_

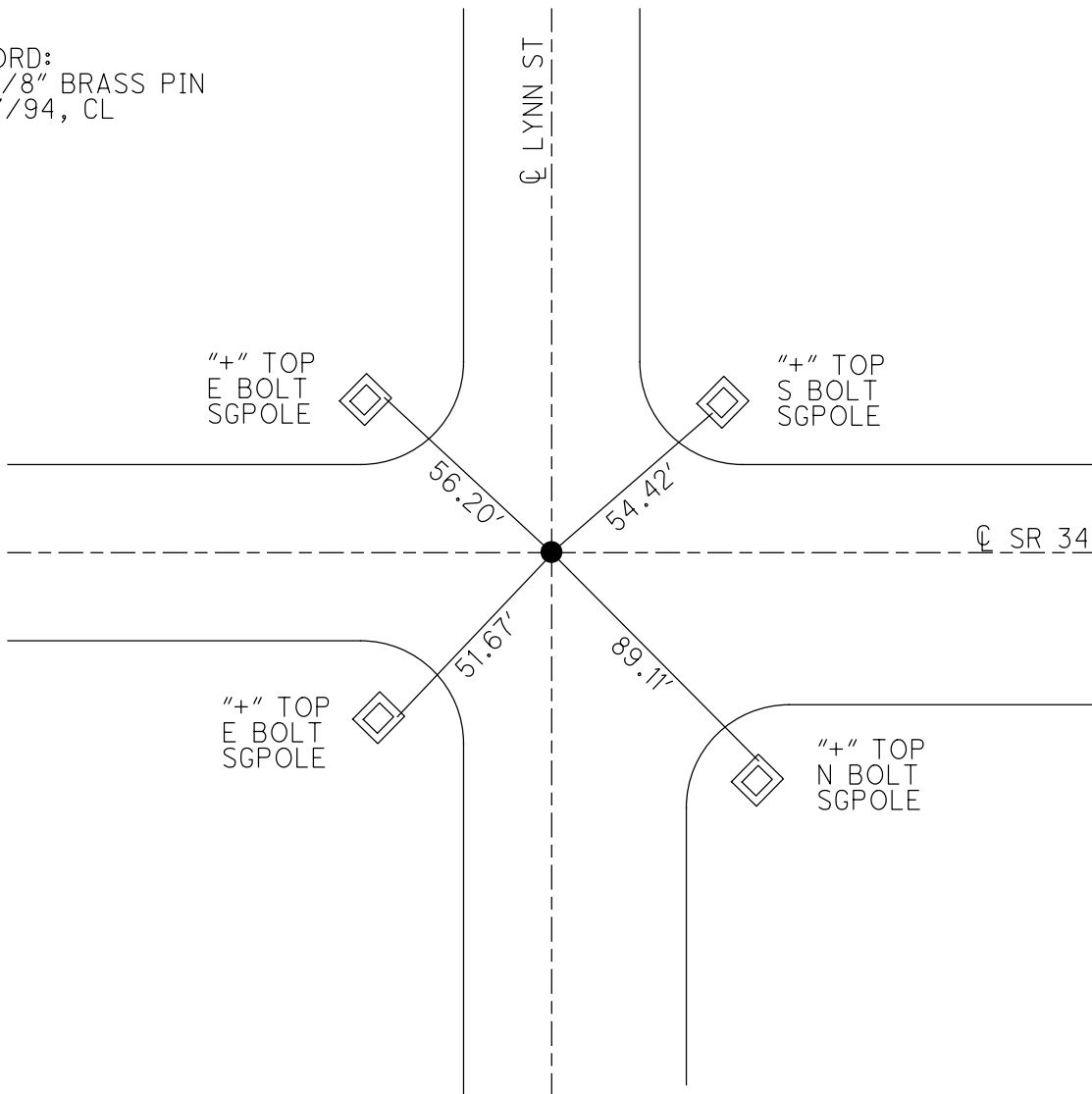
GEOID: \_\_\_\_\_

GRID: NORTHING: \_\_\_\_\_

EASTING: \_\_\_\_\_



RECORD:  
FD 5/8" BRASS PIN  
4/27/94, CL



# O.D.O.T. DISTRICT 2 SURVEY OFFICE

PERSONNEL

REFERENCE NO. 35P

SHEET 19 OF 19

NOTES LOGHRKE

H.C. CANTERBURY

DATE 4-27-94

ROUTE S.R. 34

R.C. HERMILLER

WEATHER WINDY

COUNTY WILLIAMS

VOGEL

TEMP. +67

TOWNSHIP PULASKI

SECTION 17

T 6 N R 3 E

TYPE MONUMENT 5/8" BRASS PIN

ON SURFACE - BELOW Yes

LEFT - PAV'T. - RIGHT Yes

- TO - EDGE PAVEMENT

S.L.M. 896+12

