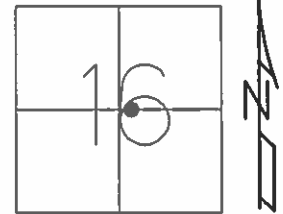


**O.D.O.T. DISTRICT 2 SURVEY OFFICE (USE ONLY)**

PERSONNEL	REFERENCE NO.	<u>36</u>	SHEET	<u>1</u>	OF	<u>17</u>
NOTES	HOMAN	DATE	<u>2/6/2013</u>	ROUTE	<u>SR 34</u>	
H.C.	<u>ROUSOS</u>	WEATHER	<u>SUNNY</u>	COUNTY	<u>WILLIAMS</u>	
R.C.	<u>HOMAN</u>	TEMP.	<u>16° F</u>	TOWNSHIP	<u>PULASKI</u>	
				SECTION	<u>16</u>	
				<u>T 6 N R 3 E</u>		

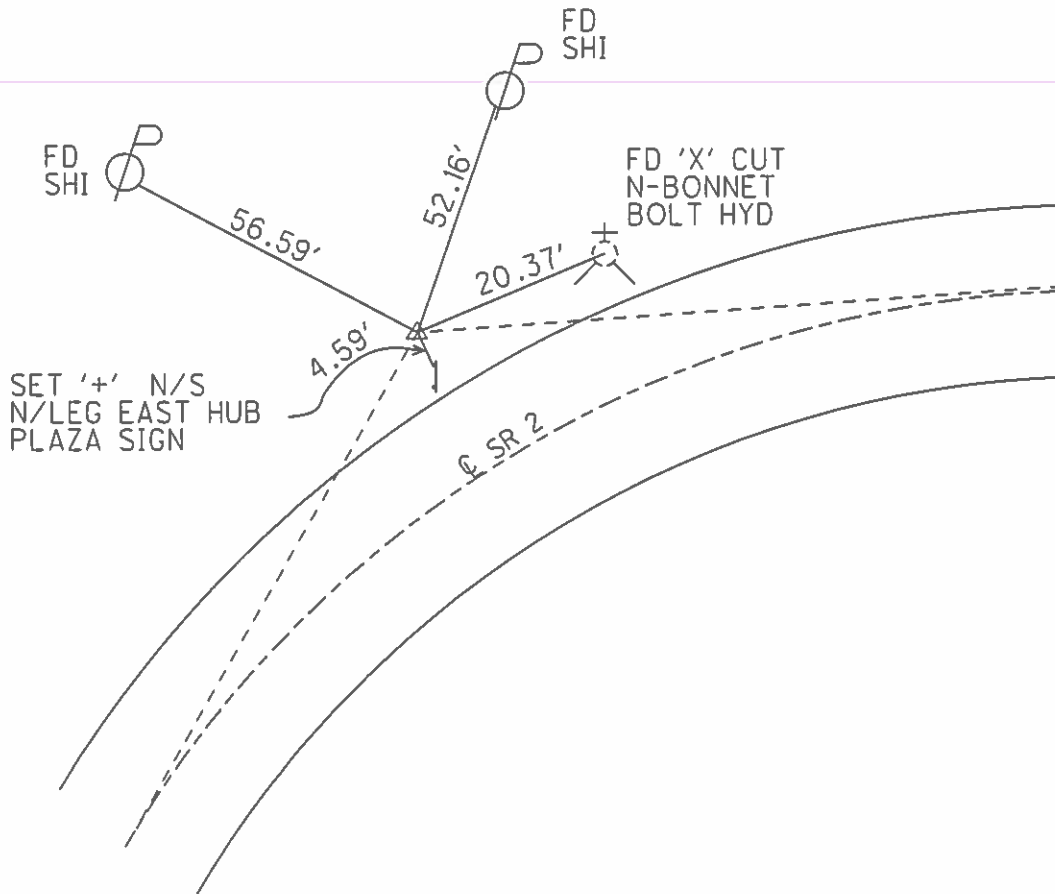
TYPE MONUMENT MAG NAIL  
 ON SURFACE - ~~BELOW~~ ON  
 LEFT - ☉ PAV'T - ~~RIGHT~~ 73.1'  
62.1' TO N EDGE PAVEMENT  
 S.L.M. 974+53



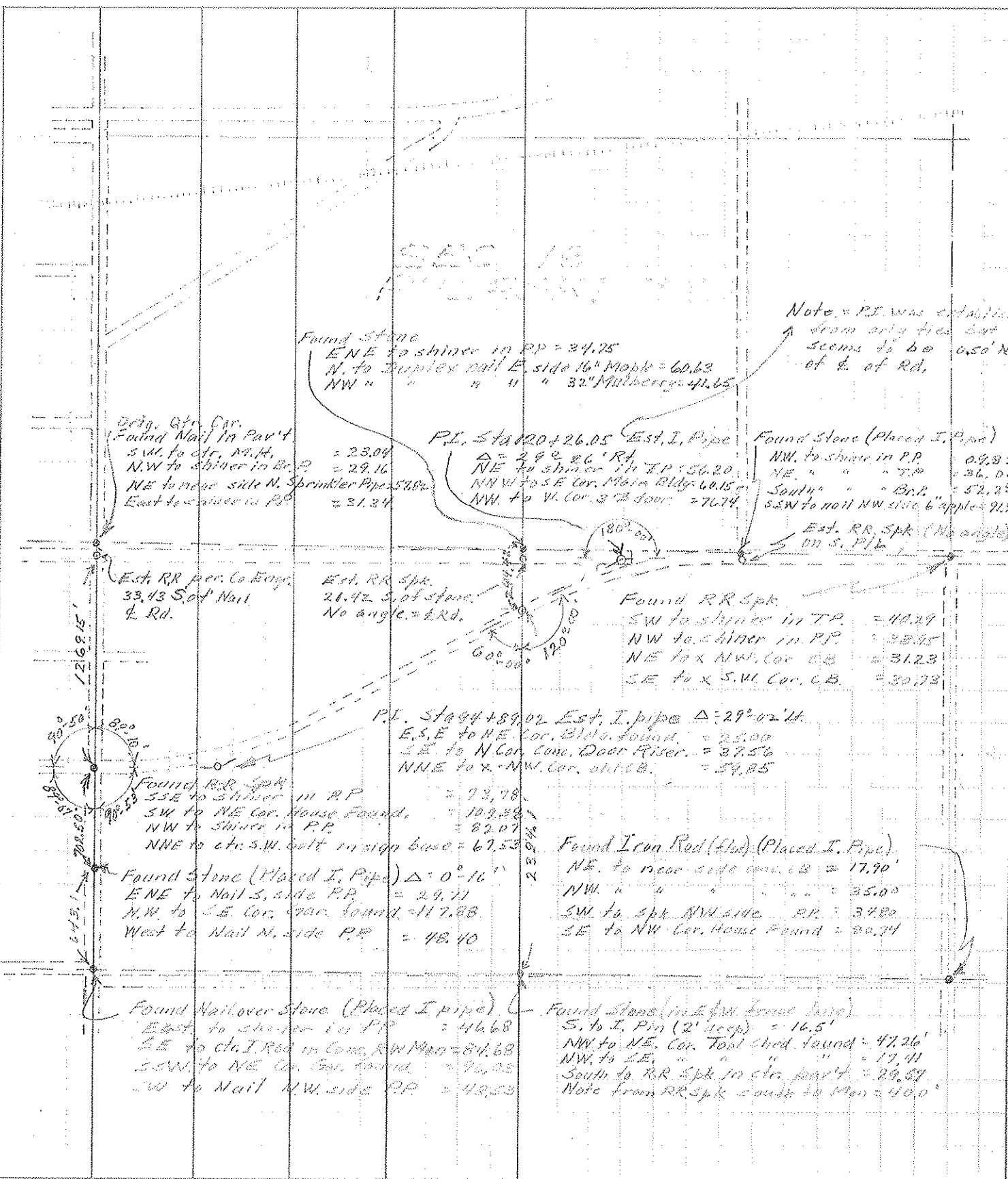
GRID: NORTHING: 665203.031 EASTING: 1444149.838

RECORD: P.I.  
 STA.390+06.8 REC  
 STA.390+06.8 2004 PLAN

NOTE:  
 SR 2 REF29



PERSONNEL TITLE PERSONNEL TITLE COUNTY WI DATE 12-9-69  
Louis \_\_\_\_\_  
Erikson \_\_\_\_\_  
Rou \_\_\_\_\_  
Stickney \_\_\_\_\_  
 S. R. # 34 P 2 WEATHER Fair  
 SEC. 16 Pulaski Twp TEMP. 40°  
 DESCRIPTION Monumenting JOB NO. \_\_\_\_\_



Found Stone  
 ENE to shiner in PP = 24.75  
 N. to Duplex nail E side 16" Maple = 60.63  
 NW " " " " " 32" Mulberry = 41.65

Note = PI was established from only ties but seems to be 0.50' N of E of Rd.

Orig. Qtr. Cor.  
 Found Nail in Pav't  
 S.W. to ctr. M.H. = 23.04  
 N.W. to shiner in Br.P. = 29.16  
 NE to near side N. Sprinkler Pipe = 57.82  
 East to shiner in PP = 31.34

P.I. Sta 120+26.05 Est. I. Pipe  
 $\Delta = 292.26$  ' Rd  
 NE to shiner in PP = 56.20  
 NNW to SE Cor. Main Bldg = 60.15  
 NW to V. Cor. 3rd door = 76.74

Found Stone (Placed I. Pipe)  
 NW to shiner in PP = 09.82  
 NE " " " " " = 26.06  
 South " " " " " Br.P. = 52.23  
 SSW to nail NW side 6" apple = 91.76

Est. RR per. Co. Engg.  
 33.43 S of Nail  
 E. Rd.

Est. RR Spk.  
 21.42 S. of stone.  
 No angle. = E.Rd.

Found RR Spk.  
 SW to shiner in TP = 40.29  
 NW to shiner in PP = 38.45  
 NE to x NW Cor. CB = 31.23  
 SE to x S.W. Cor. CB = 30.73

P.I. Sta 94+89.02 Est. I. pipe  $\Delta = 29^{\circ}02'$   
 E.S.E to NE Cor. Bldg. found. = 25.00  
 SE to N Cor. Conc. Door Riser = 37.56  
 NNE to x - NW Cor. old CB = 34.85

Found RR Spk  
 SSE to shiner in PP = 73.78  
 SW to NE Cor. House found. = 109.38  
 NW to shiner in PP = 82.07  
 NNE to ctr. S.W. belt in sign base = 67.53

Found Iron Rod (Placed I. Pipe)  
 NE to near side apple CB = 17.90'  
 NW " " " " " = 35.00  
 SW to spk NW side PP = 34.80  
 SE to NW Cor. House found = 30.71

Found Stone (Placed I. Pipe)  $\Delta = 0^{\circ}16'$   
 ENE to Nail S. side PP = 29.71  
 N.W. to SE Cor. Gar. found. = 117.88  
 West to Nail N. side PP = 48.40

Found Nail over Stone (Placed I. Pipe)  
 East to shiner in PP = 46.68  
 SE to ctr. I. Rod in Conc. RW Man = 84.68  
 SSW to NE Cor. Gar. found. = 96.03  
 SW to Nail NW side PP = 48.53

Found Stone (in E. Iron fence line)  
 S. to I. Pin (2' deep) = 16.5'  
 NW to NE Cor. Tool shed found = 47.26'  
 NW to SE " " " " " = 17.41  
 South to RR Spk in ctr. pav't = 29.57  
 Note from RR Spk south to Man = 40.0'