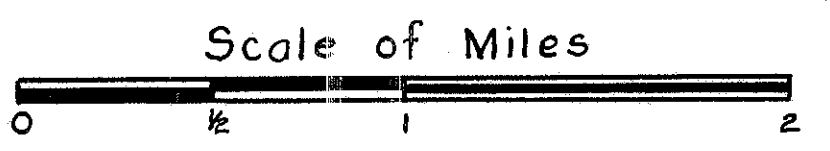
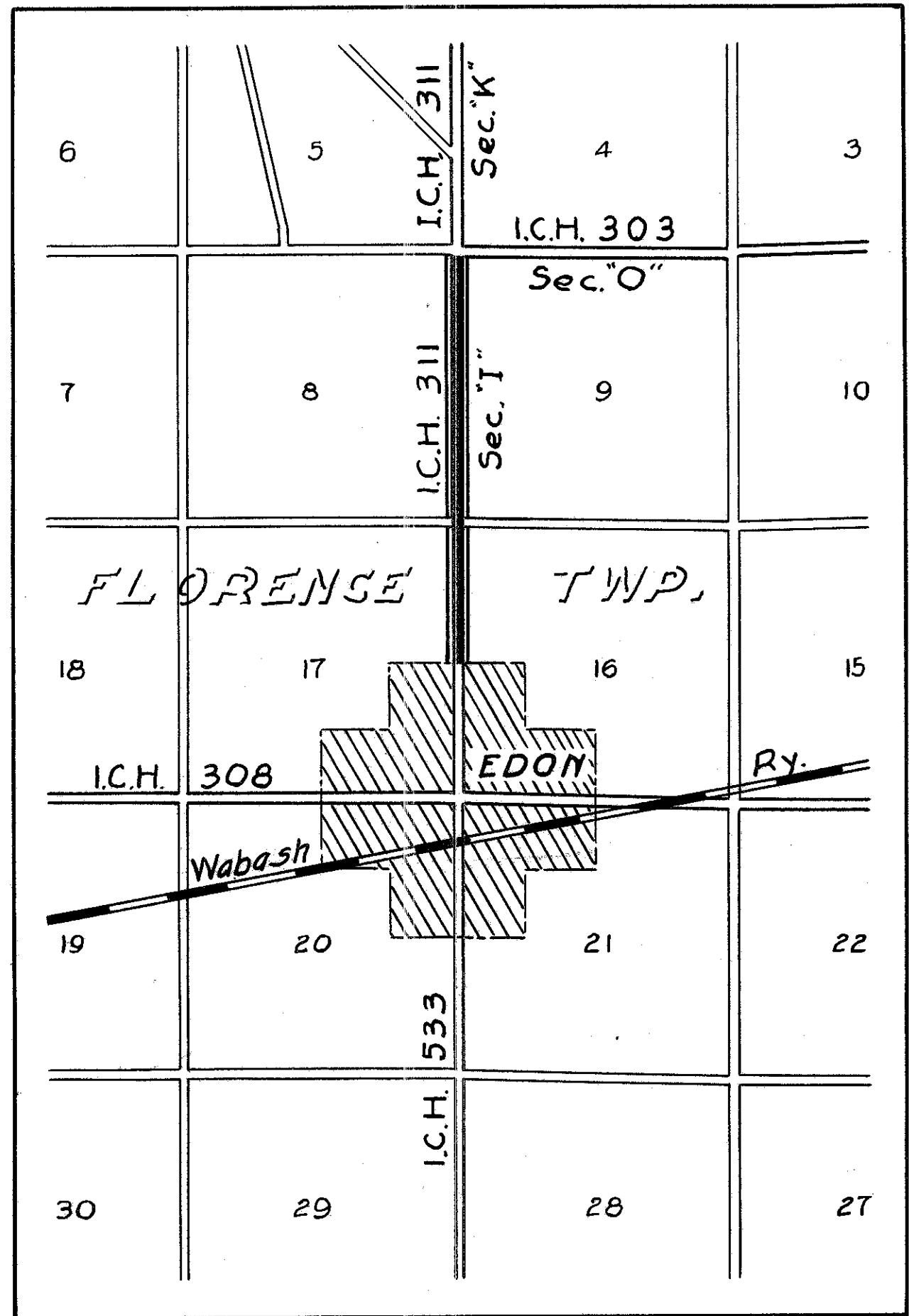


*R/W checked
casements of planned as shown
JP
3/27/44*

STATE OF OHIO
DEPARTMENT OF HIGHWAYS
RIGHT OF WAY PLANS
EDON COONEY ROAD
S.H. 311 SEC. 1
WILLIAMS COUNTY
FLORENCE TOWNSHIP



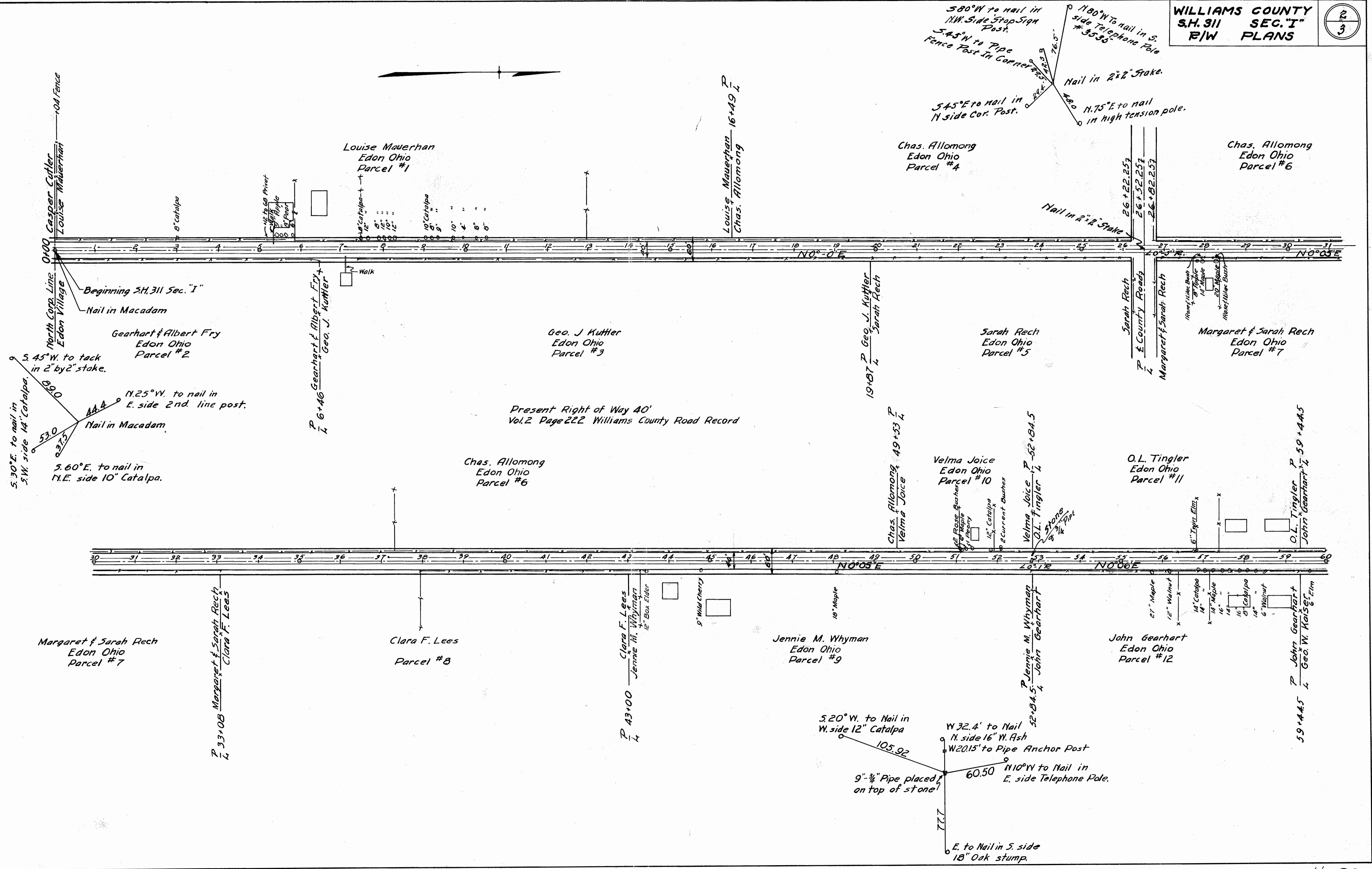
IMPROVED ROADS
PROPOSED IMPROVEMENT

Scanned
July 1997

72-1
646
7
H-22

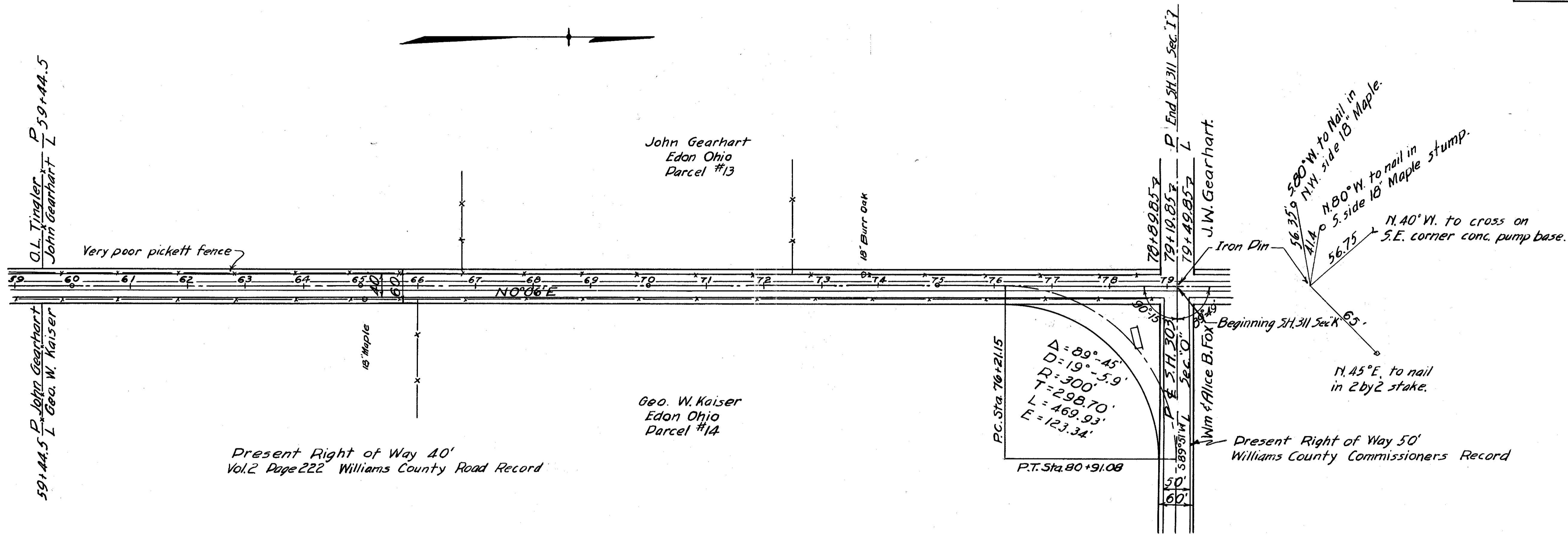
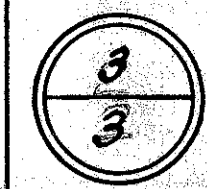
Scanned July 14, 2011

WILLIAMS COUNTY S.H. 311 SEC. "I" R/W PLANS



5.30°E. to nail in SW side 14" Catalpa.
5.45°W. to tack in 2" by 2" stake.
53.0
53.7
53.0
Nail in Macadam.
N.25°W. to nail in E. side 2nd. line post.
N.4.4

5.20°W. to Nail in W. side 12" Catalpa
105.92
W 32.4' to Nail N. side 16" W. Ash
W 20.15' to Pipe Anchor Post
60.50
N10°W to Nail in E. side Telephone Pole.
77.7
E. to Nail in S. side 18" Oak stump.



Scanned July 1987