

O.D.O.T. DISTRICT 2 SURVEY OFFICE (USE ONLY)

PERSONNEL _____

REFERENCE NO. 5

SHEET 16 OF 37

NOTES ROUSOS

DATE 8/04/09

ROUTE SR 49

H.C. HOMAN

WEATHER PTLY CLOUDY

COUNTY WILLIAMS

R.C. ROUSOS

TEMP. 80°

TOWNSHIP ST. JOSEPH

SECTION 22

DWG BY NIESE PID 94334

T 6 N R 1 E

TYPE MONUMENT P.K. NAIL

ON SURFACE - ~~BELOW~~ ON

OFFSET ☉ PAVEMENT ON LT : RT

- TO - EDGE PAVEMENT

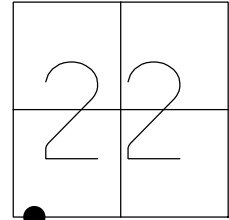
STATION: 106+89.24

HORIZ.DATUM: NAD83 (2011)

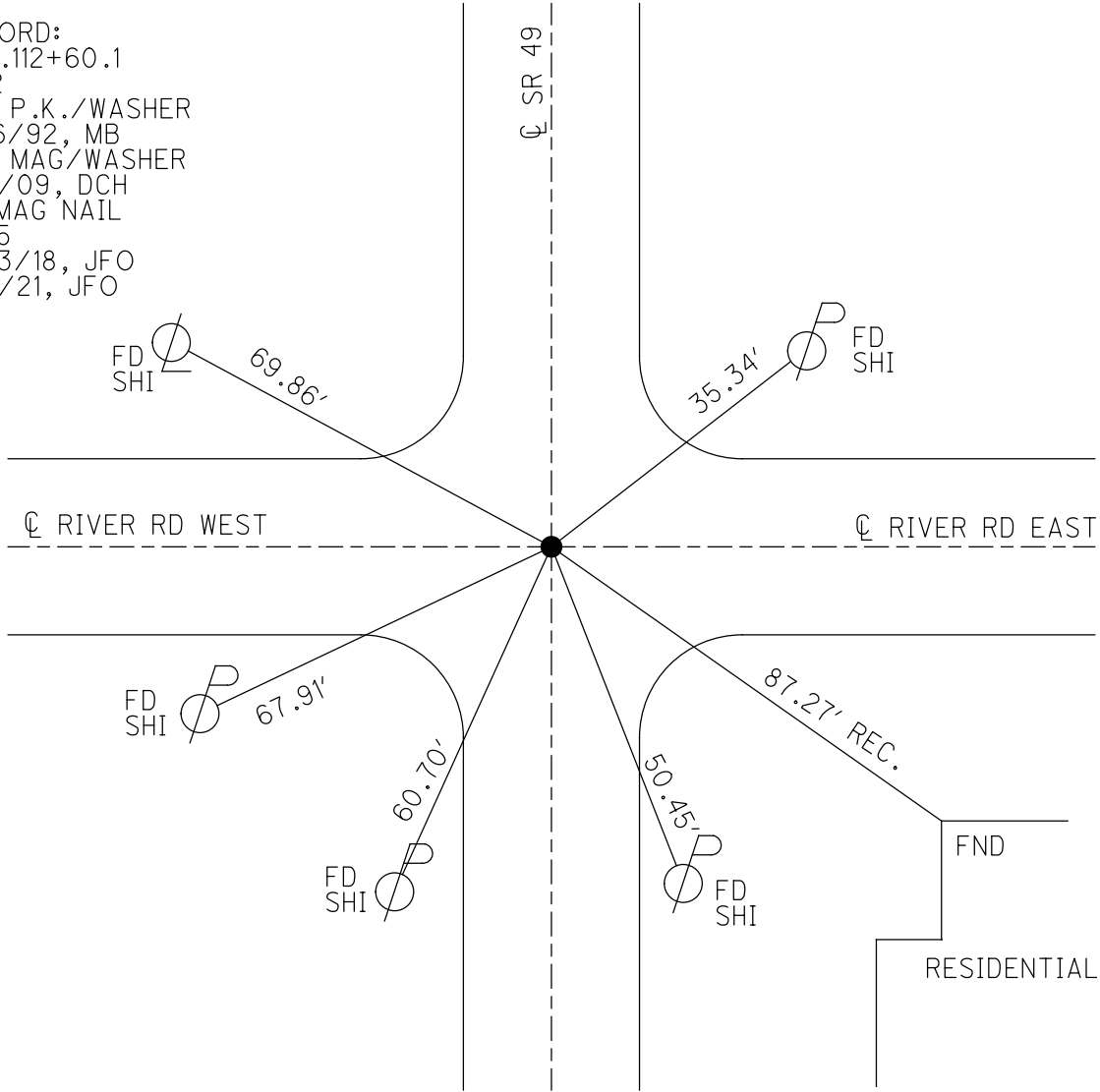
GEOID: NAVD88 2012A

GRID: NORTHING: 659539.695

EASTING: 1352323.713



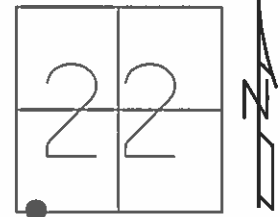
RECORD:
 STA.112+60.1
 1932
 SET P.K./WASHER
 9/16/92, MB
 SET MAG/WASHER
 8/4/09, DCH
 FD MAG NAIL
 REF5
 7/23/18, JFO
 4/5/21, JFO



O.D.O.T. DISTRICT 2 SURVEY OFFICE (USE ONLY)

PERSONNEL _____ REFERENCE NO. 4 D SHEET 16 OF 17
 NOTES ROUSOS DATE 8/4/09 ROUTE SR 49
 H.C. HOMAN WEATHER PTLY CLOUDY COUNTY WILLIAMS
 R.C. ROUSOS TEMP. 80° TOWNSHIP ST. JOSEPH
 _____ SECTION 22
 _____ T 6 N R 1 E

TYPE MONUMENT P.K. NAIL
 ON SURFACE - ~~BELOW~~ ON _____
 LEFT - ☉ PAV'T - RIGHT ON, 2.5' S OF ☉ W
 - TO - EDGE PAVEMENT
 S.L.M. 106+65



GRID: NORTHING: 659539.708 EASTING: 1352323.660

RECORD:
 STA. 112+60.1
 1932
 SET PK/WASHER
 9/16/92, MB
 SET MAG/WASHER
 8/4/09, DCH

