

O.D.O.T. DISTRICT 2 SURVEY OFFICE (USE ONLY)

PERSONNEL

REFERENCE NO. 6 B

SHEET 18 OF 37

NOTES O'DONNELL

DATE 4/5/21

ROUTE SR 49

H.C. AUBLE

WEATHER CLOUDY

COUNTY WILLIAMS

R.C. NIESE

TEMP. 50°

TOWNSHIP ST. JOSEPH

SECTION 22

DWG BY NIESE PID 94334

T 6 N R 1 E

TYPE MONUMENT MAG/WASHER

ON SURFACE - ~~BELOW~~ ON

OFFSET C PAVEMENT 1.0' ~~RT~~ : RT

10.1' TO RT EDGE PAVEMENT

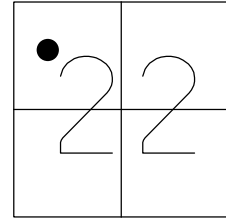
STATION: 146+62.73

HORIZ. DATUM: NAD83 (2011)

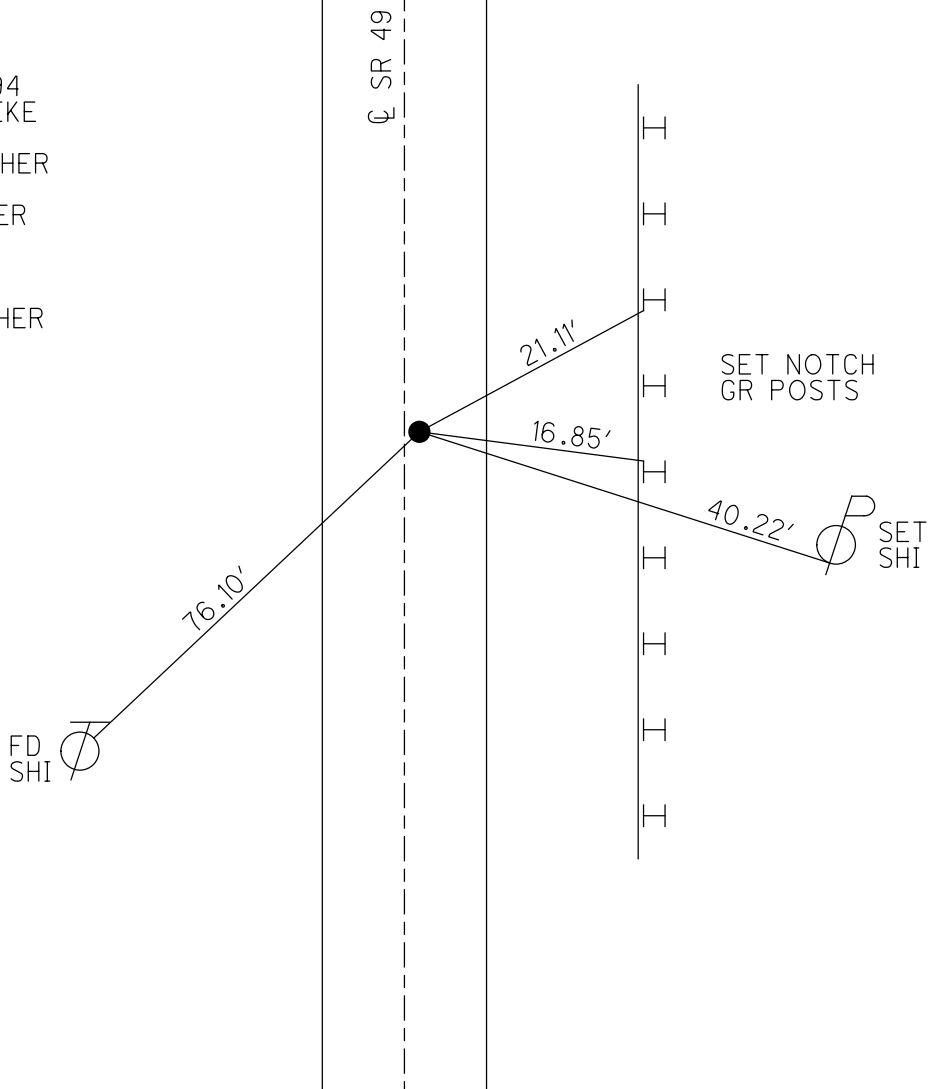
GEOID: NAVD88 2012A

GRID: NORTHING: 663512.417

EASTING: 1352399.596



RECORD:
 1932 PLAN
 STA. 152+37.94
 FD SM.R.R.SPIKE
 5/24/00, MB
 SET P.K./WASHER
 8/3/00, MDB
 FD MAG/WASHER
 REFB6
 7/23/18, JFO
 4/1/20, JFO
 SET MAG/WASHER
 4/5/21, JFO



O.D.O.T. DISTRICT 2 SURVEY OFFICE

PERSONNEL _____

REFERENCE NO. 6-B

SHEET 2 OF 25

NOTES BARNHISEL

H.C. MOSEK

R.C. CANTERBURY

DATE 5-24-00

WEATHER SUNNY

TEMP. +75°

ROUTE 49

COUNTY WILLIAMS

TOWNSHIP ST. JOSEPH

SECTION 22

T.G.N.R. 1 E

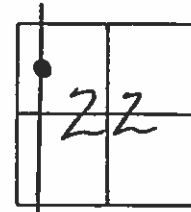
TYPE MONUMENT Sm RR Spk

ON SURFACE - ~~BELOW~~ yes

~~LEFT~~ - CL PAV'T. - RIGHT 1.0'

10.1' TO RT EDGE PAVEMENT

S.L.M. 146+45



Record: 1932 Plan
Sta = 152+37.94

RESET PK/WASHER
8-3-00
M.D.B.

