

O.D.O.T. DISTRICT 2 SURVEY OFFICE (USE ONLY)

PERSONNEL

REFERENCE NO. 7

SHEET 19 OF 37

NOTES RHOADES

DATE 4/1/20

ROUTE SR 49

H.C. O'DONNELL

WEATHER CLOUDY

COUNTY WILLIAMS

R.C. BALBAUGH

TEMP. 42°

TOWNSHIP ST. JOSEPH

SECTION 15

DWG BY NIESE

PID 94334

T 6 N R 1 E

TYPE MONUMENT MAG/WASHER

ON SURFACE - ~~BELOW~~ ON

OFFSET 0.9' LT : ~~RT~~

9.4' TO LT EDGE PAVEMENT

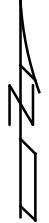
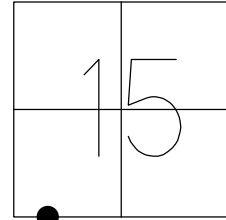
STATION: 159+66.08

HORIZ.DATUM: NAD83 (2011)

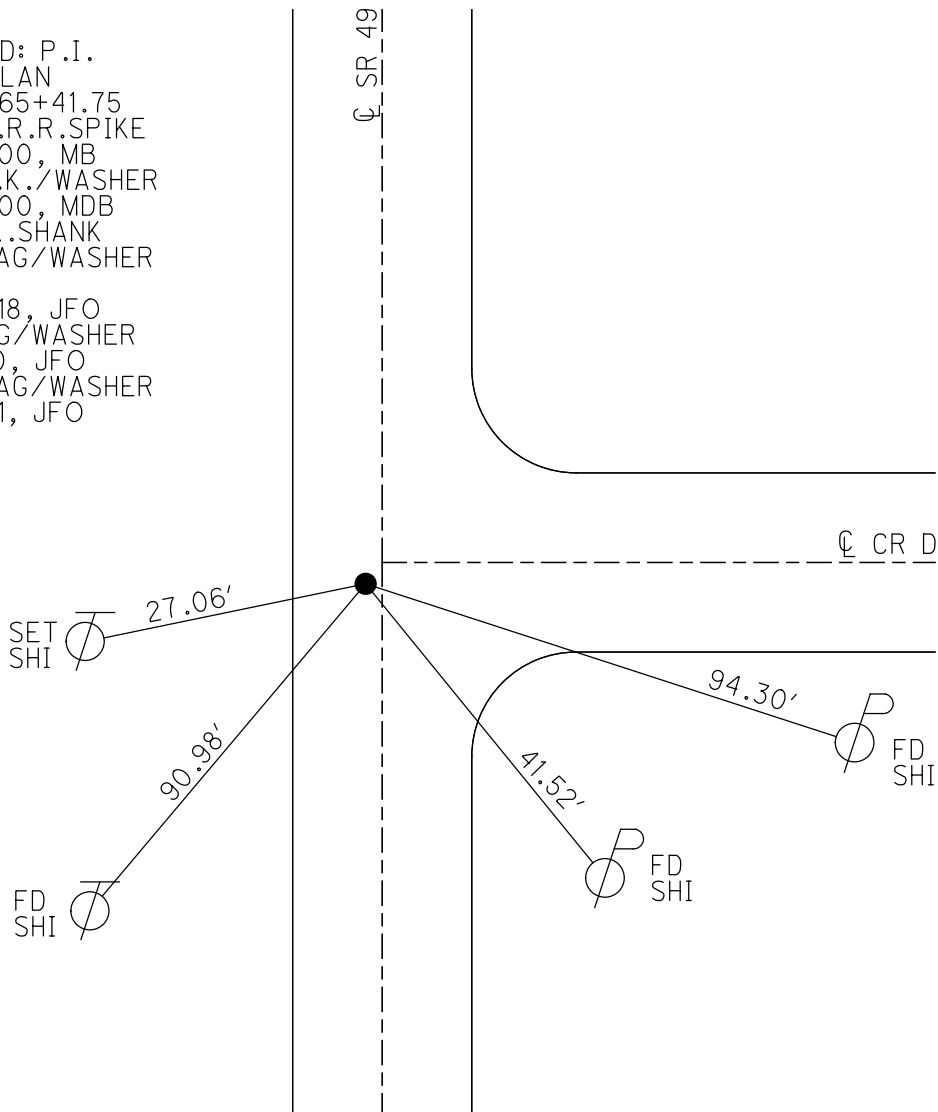
GEOID: NAVD88 2012A

GRID: NORTHING: 664815.733

EASTING: 1352408.402



RECORD: P.I.
1932 PLAN
STA. 165+41.75
FD SM.R.R.SPIKE
5/24/00, MB
SET P.K./WASHER
8/23/00, MDB
FD P.K.SHANK
SET MAG/WASHER
REF7
7/23/18, JFO
FD MAG/WASHER
4/1/20, JFO
SET MAG/WASHER
4/5/21, JFO



O.D.O.T. DISTRICT 2 SURVEY OFFICE

PERSONNEL

REFERENCE NO. 7

SHEET 3 OF 25

NOTES BARNHISEL

H.C. MOSEK

R.C. CANTERBURY

DATE 5-24-00

WEATHER SUNNY

TEMP. +75°

ROUTE 49

COUNTY WILLIAMS

TOWNSHIP ST. Joseph

SECTION 15

T 6 N R 1 E

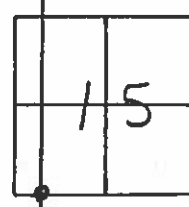
TYPE MONUMENT Sm RR Spk

ON SURFACE - BELOW yes

LEFT- & PAV'T. - RIGHT 0.9'

9.4' TO LT EDGE PAVEMENT

S.L.M. 159+49 2' South of & East



Record: 1932 PLAN
Sta: 165+41.75

8-23-00
Reset PK/washer
MIDB

