

O.D.O.T. DISTRICT 2 SURVEY OFFICE (USE ONLY)

PERSONNEL

REFERENCE NO. 7 A

SHEET 20 OF 37

NOTES RHOADES

DATE 4/1/20

ROUTE SR 49

H.C. O'DONNELL

WEATHER CLOUDY

COUNTY WILLIAMS

R.C. BALBAUGH

TEMP. 42°

TOWNSHIP ST. JOSEPH

SECTION 15

DWG BY NIESE PID 94334

T 6 N R 1 E

TYPE MONUMENT P.K. NAIL

ON SURFACE - ~~BELOW~~ ON

OFFSET 0 PAVEMENT ON LT : RT

10.6' TO RT EDGE PAVEMENT

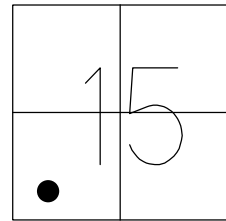
STATION: 167+70.11

HORIZ.DATUM: NAD83 (2011)

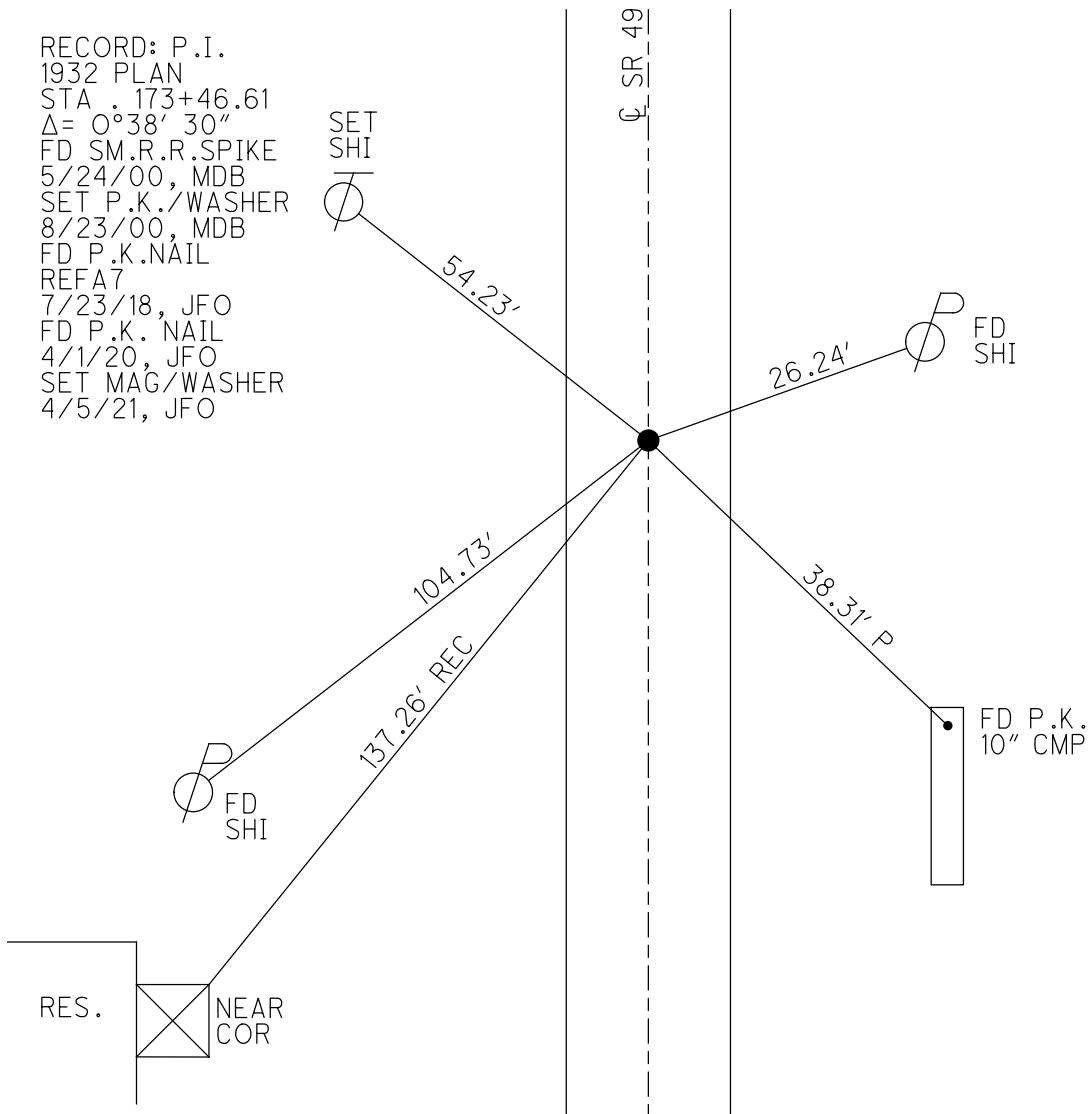
GEOID: NAVD88 2012A

GRID: NORTHING: 665619.509

EASTING: 1352428.741



RECORD: P.I.
1932 PLAN
STA . 173+46.61
 $\Delta = 0^{\circ}38'30''$
FD SM.R.R.SPIKE
5/24/00, MDB
SET P.K./WASHER
8/23/00, MDB
FD P.K.NAIL
REFA7
7/23/18, JFO
FD P.K. NAIL
4/1/20, JFO
SET MAG/WASHER
4/5/21, JFO



O.D.O.T. DISTRICT 2 SURVEY OFFICE

PERSONNEL

REFERENCE NO. 7-A

SHEET 4 OF 25

NOTES BARNHISEL

H.C. MOSEER

R.C. CANTERBURY

DATE 5-24-00

WEATHER SUNNY

TEMP. +75°

ROUTE 49

COUNTY WILLIAMS

TOWNSHIP ST. JOSEPH

SECTION 15

T6 N R 1 E

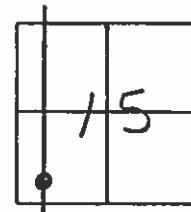
TYPE MONUMENT Sm RR Spk

ON SURFACE - ~~BELOW~~ yes

LEFT - ~~PAV'T.~~ RIGHT yes

10.6 TO RT EDGE PAVEMENT

S.L.M. 167+55



RECORD: 1932 PLAN

Sta: 173+46.61

$\Delta = 0^{\circ}-38'-30''$ LT (meas.)

$= 0^{\circ}-38'$ (rec.)

B-23-00
Reset PK/washer
MDB

