

O.D.O.T. DISTRICT 2 SURVEY OFFICE (USE ONLY)

PERSONNEL

REFERENCE NO. 8

SHEET 22 OF 37

NOTES RHOADES

DATE 4/1/20

ROUTE SR 49

H.C. O'DONNELL

WEATHER CLOUDY

COUNTY WILLIAMS

R.C. BALBAUGH

TEMP. 42°

TOWNSHIP ST. JOSEPH

DWG BY NIESE

PID 94334

SECTION 15

T 6 N R 1 E

TYPE MONUMENT 3/4" IPIPE

~~ON SURFACE~~ - BELOW 5 1/2"

OFFSET Q PAVEMENT ON LT : RT

11.1' TO RT EDGE PAVEMENT

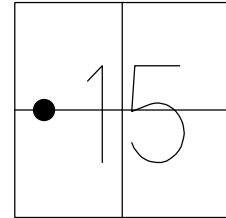
STATION: 186+10.84

HORZ. DATUM: NAD83 (2011)

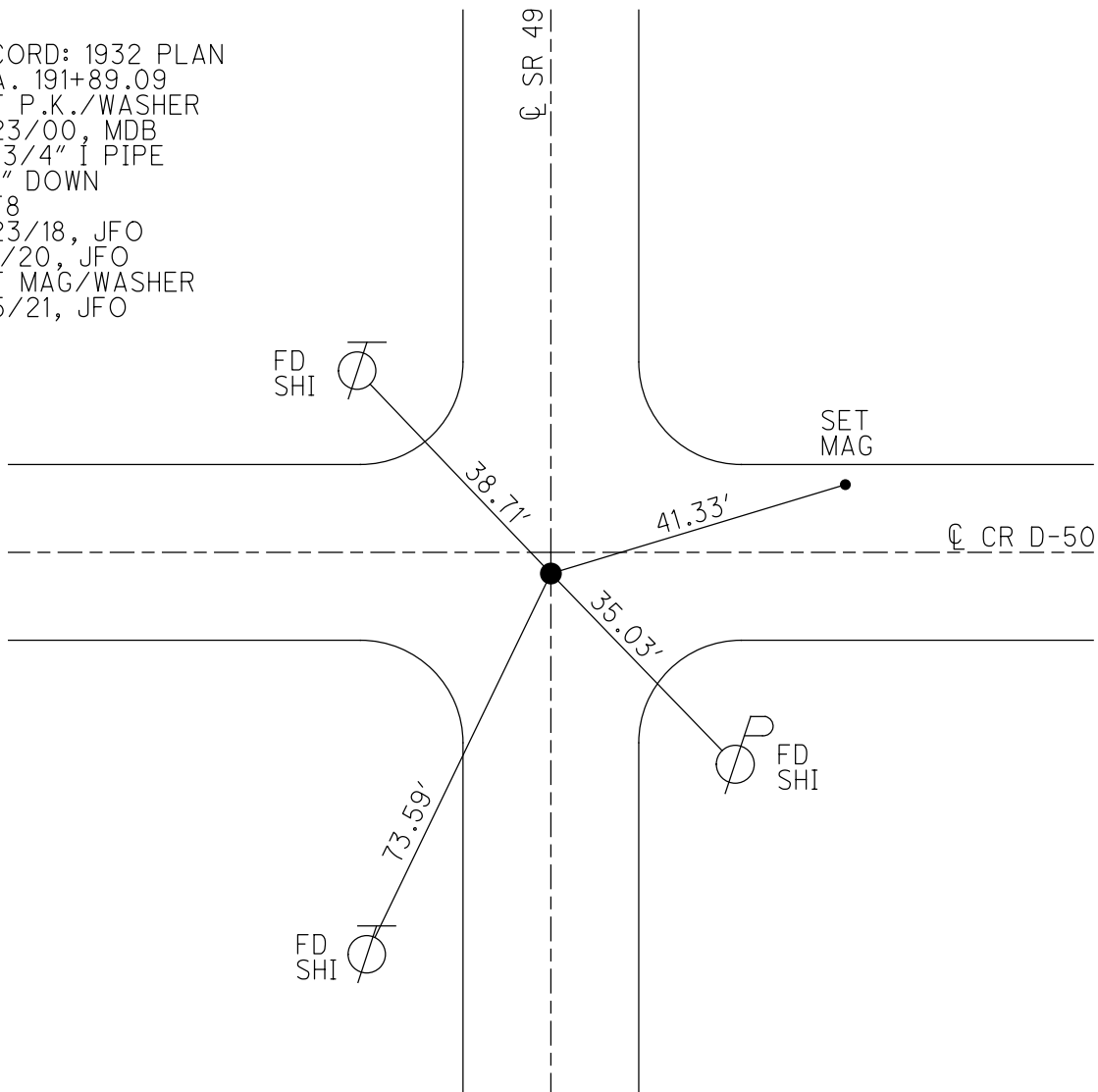
GEOID: NAVD88 2012A

GRID: NORTHING: 667460.087

EASTING: 1352452.301



RECORD: 1932 PLAN
 STA. 191+89.09
 SET P.K./WASHER
 8/23/00, MDB
 FD 3/4" I PIPE
 5.5" DOWN
 REF8
 7/23/18, JFO
 4/1/20, JFO
 SET MAG/WASHER
 4/5/21, JFO



O.D.O.T. DISTRICT 2 SURVEY OFFICE

PERSONNEL

REFERENCE NO. 8

SHEET 6 OF 25

NOTES BARNHISEL

H.C. MOSEK

R.C. CANTERBURY

DATE 6-1-00

WEATHER SUNNY

TEMP. +80°

ROUTE 49

COUNTY WILLIAMS

TOWNSHIP ST. JOSEPH

SECTION 15

T 6 N R 1 E

TYPE MONUMENT Sm RR Spk

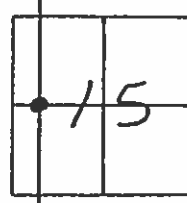
ON SURFACE - ~~BELOW~~ yes

~~LEFT - & PAV'T. - RIGHT~~ yes

11.1 TO RT EDGE PAVEMENT

S.L.M. 185+98

2' South of E WEST



RECORD: 1932 PLAN
Sta = 191+89.09

8-23-00
Reset PK/washer
MDB

