

O.D.O.T. DISTRICT 2 SURVEY OFFICE (USE ONLY)

PERSONNEL

REFERENCE NO. 8 C

SHEET 23 OF 37

NOTES RHOADES DATE 4/1/20  
 H.C. O'DONNELL WEATHER CLOUDY  
 R.C. BALBAUGH TEMP. 42°

ROUTE SR 49  
 COUNTY WILLIAMS  
 TOWNSHIP ST. JOSEPH  
 SECTION 15

DWG BY NIESE PID 94334

T 6 N R 1 E

TYPE MONUMENT P.K. NAIL

ON SURFACE - ~~BELOW~~ ON

OFFSET 0.3' ~~LT~~ : RT

10.8' TO RT EDGE PAVEMENT

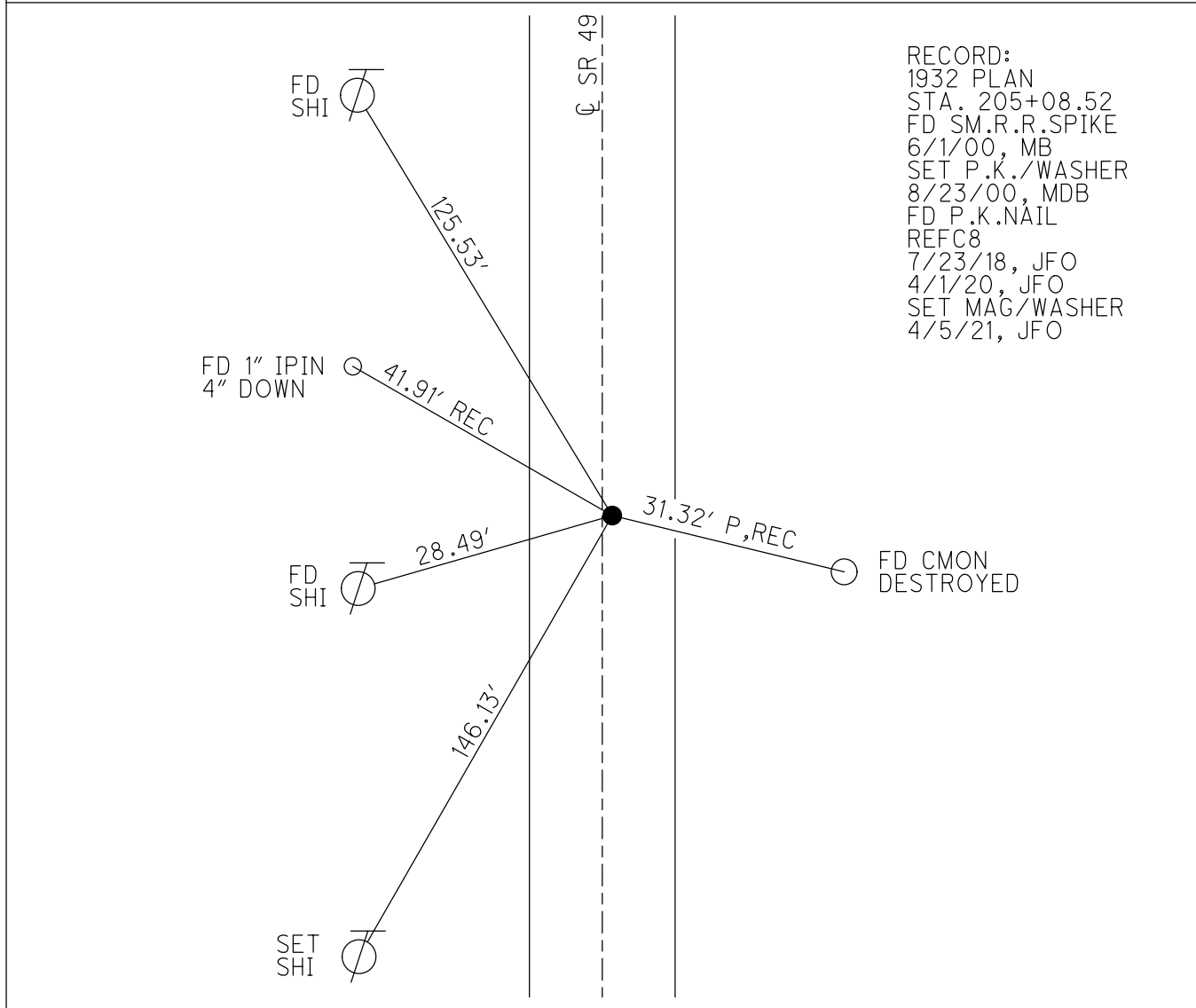
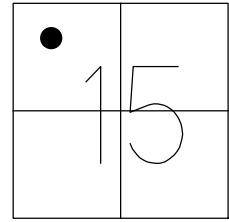
STATION: 199+30.97

HORZ.DATUM: NAD83 (2011)

GEOID: NAVD88 2012A

GRID: NORTHING: 668780.051

EASTING: 1352473.734



RECORD:  
 1932 PLAN  
 STA. 205+08.52  
 FD SM.R.R.SPIKE  
 6/1/00, MB  
 SET P.K./WASHER  
 8/23/00, MDB  
 FD P.K.NAIL  
 REFC8  
 7/23/18, JFO  
 4/1/20, JFO  
 SET MAG/WASHER  
 4/5/21, JFO

O.D.O.T. DISTRICT 2 SURVEY OFFICE

PERSONNEL

REFERENCE NO. B-C

SHEET 7 OF 25

NOTES BARNHISEL

H.C. MOSEK

R.C. CANTERBURY

DATE 6-1-00

WEATHER SUNNY

TEMP. +80°

ROUTE 49

COUNTY WILLIAMS

TOWNSHIP ST. Joseph

SECTION 15

T6 N R 1 E

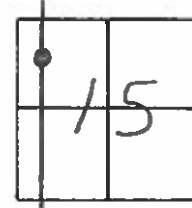
TYPE MONUMENT Sm RR Spk

ON SURFACE - ~~BELOW~~ yes

~~LEFT~~ - E PAV'T. - RIGHT 0.3'

10.8 TO RT EDGE PAVEMENT

S.L.M. 199+19



Record: 1932 Plat  
Sta = 205+08.52

B-23-00  
Reset PK/washer  
MDB

