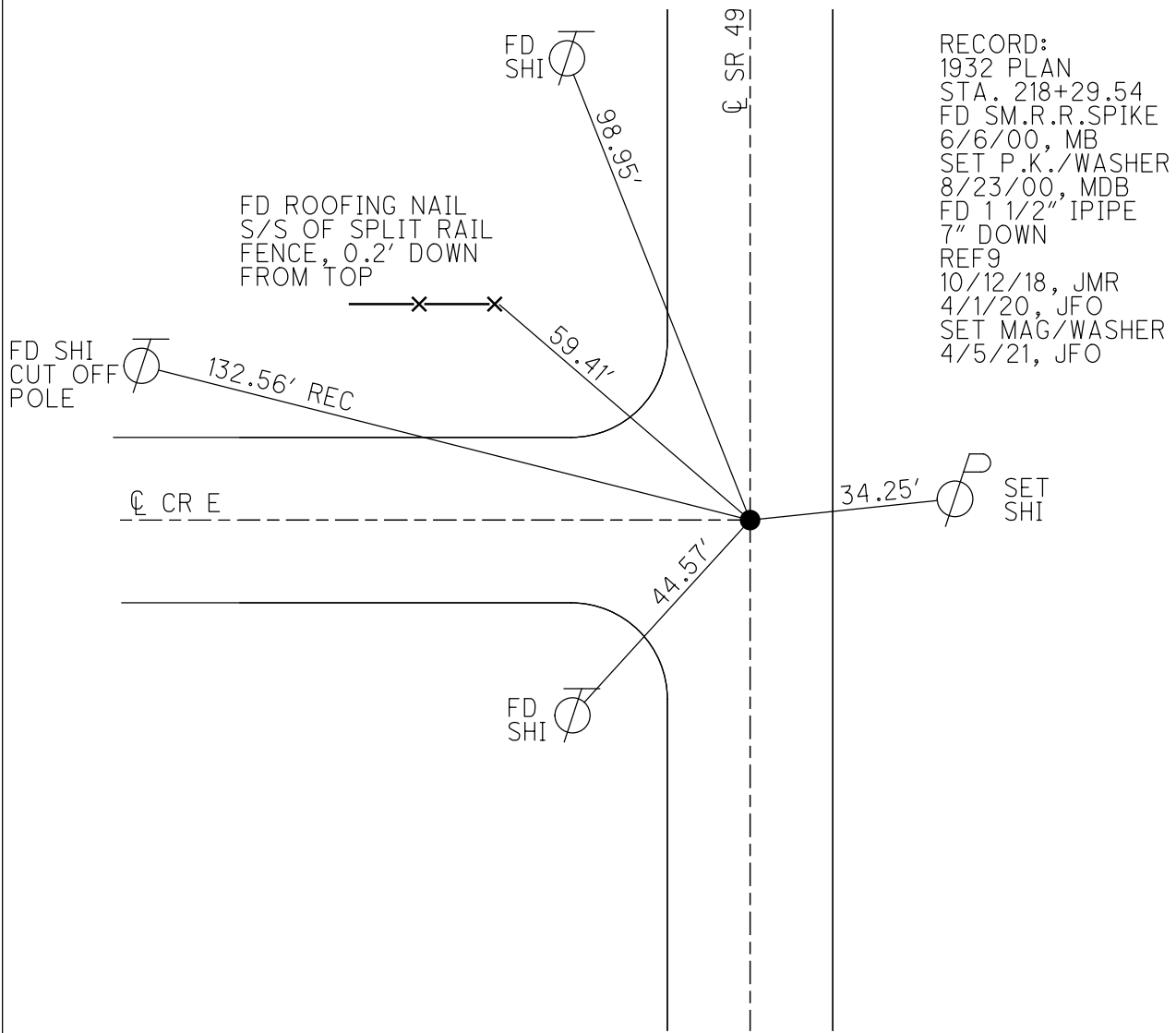
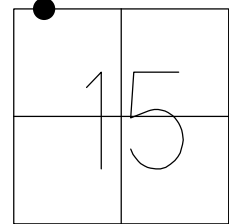


O.D.O.T. DISTRICT 2 SURVEY OFFICE (USE ONLY)

PERSONNEL _____ REFERENCE NO. 9 SHEET 24 OF 37
 NOTES RHOADES DATE 4/1/20 ROUTE SR 49
 H.C. O'DONNELL WEATHER CLOUDY COUNTY WILLIAMS
 R.C. BALBAUGH TEMP. 42° TOWNSHIP ST. JOSEPH
 DWG BY NIESE PID 94334 SECTION 15
 T 6 N R 1 E

TYPE MONUMENT 1 1/2" IPIPE
~~ON SURFACE~~ - BELOW 7"
 OFFSET ϕ PAVEMENT ON LT : RT
9.8' TO RT EDGE PAVEMENT
 STATION: 212+51.37

HORZ.DATUM: NAD83 (2011) GEOID: NAVD88 2012A
 GRID: NORTHING: 670100.263 EASTING: 1352495.933



RECORD:
 1932 PLAN
 STA. 218+29.54
 FD SM.R.R.SPIKE
 6/6/00, MB
 SET P.K./WASHER
 8/23/00, MDB
 FD 1 1/2" IPIPE
 7" DOWN
 REF9
 10/12/18, JMR
 4/1/20, JFO
 SET MAG/WASHER
 4/5/21, JFO

O.D.O.T. DISTRICT 2 SURVEY OFFICE

PERSONNEL

REFERENCE NO. 9 SHEET 8 OF 25

NOTES BARNHISEL

H.C. MOSEK

R.C. CANTERBURY

DATE 6-6-00

WEATHER SUNNY

TEMP. +65°

ROUTE 49

COUNTY WILLIAMS

TOWNSHIP ST. Joseph

SECTION 15

T 6 N R 1 E

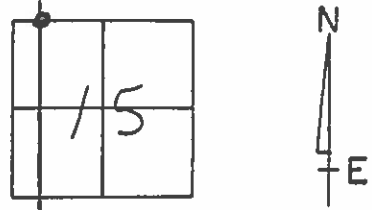
TYPE MONUMENT Sm RR Spk

ON SURFACE - BELOW yes

LEFT - & PAV'T. - RIGHT 0.8'

9.8' TO RT EDGE PAVEMENT

S.L.M. 212+42 ON E WEST



Record: 1932 PLAN
Sta = 218+29.54

8-23-00
Reset PK/washer
MDB

