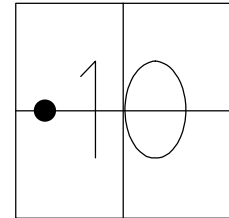


O.D.O.T. DISTRICT 2 SURVEY OFFICE (USE ONLY)

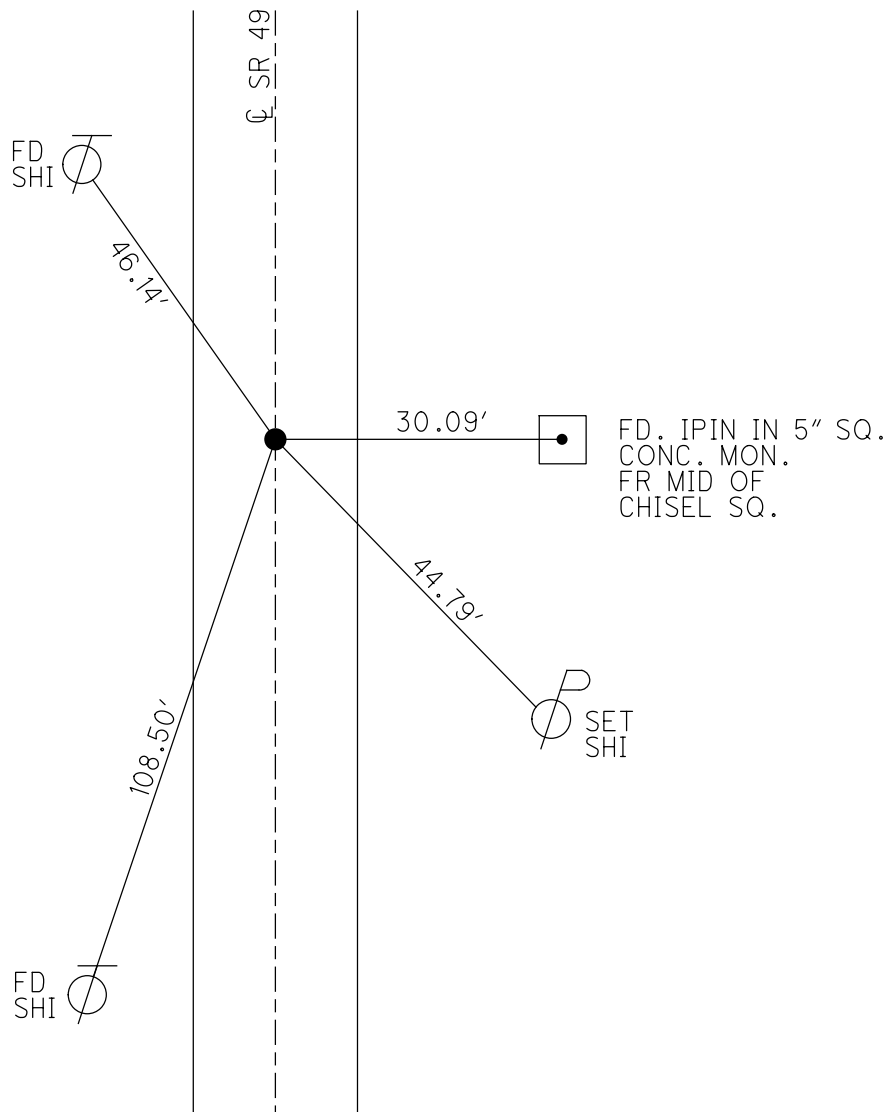
PERSONNEL _____ REFERENCE NO. 10 SHEET 25 OF 37
 NOTES RHOADES DATE 4/1/20 ROUTE SR 49
 H.C. O'DONNELL WEATHER CLOUDY COUNTY WILLIAMS
 R.C. BALBAUGH TEMP. 42° TOWNSHIP ST. JOSEPH
 DWG BY NIESE PID 94334 SECTION 10
 T 6 N R 1 E

TYPE MONUMENT _____ MAG/WASHER _____
 ON SURFACE - ~~BELOW~~ _____ ON _____
 OFFSET $\frac{C}{Q}$ PAVEMENT _____ ON _____ LT : RT _____
10.9' TO RT EDGE PAVEMENT
 STATION: 238+91.48



HORZ. DATUM: NAD83 (2011) GEOID: NAVD88 2012A
 GRID: NORTHING: 672740.201 EASTING: 1352525.889

RECORD:
 1932 PLAN
 STA. 244+71.44
 FD SM.R.R.SPIKE
 6/6/00, MB
 SET P.K./WASHER
 8/23/00, MDB
 FD P.K. NAIL
 SET MAG NAIL
 REF10
 10/12/18, JMR
 FD MAG NAIL
 4/1/20, JFO
 SET MAG/WASHER
 4/5/21, JFO



O.D.O.T. DISTRICT 2 SURVEY OFFICE

PERSONNEL

REFERENCE NO. 10

SHEET 9 OF 25

NOTES BARNHISEL

H.C. MOSEK

R.C. CANTERBURY

DATE 6-6-00

WEATHER SUNNY

TEMP. +65°

ROUTE 49

COUNTY WILLIAMS

TOWNSHIP ST. JOSEPH

SECTION 10

T 6 N R 1 E

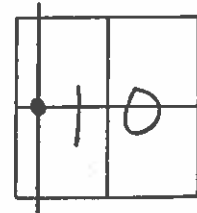
TYPE MONUMENT Sm RR Spk

ON SURFACE - ~~BELOW~~ yes

~~LEFT - & PAV'T. - RIGHT~~ yes

10.9' TO RT EDGE PAVEMENT

S.L.M. 238+86



Record: 1932 PLAN
Sta = 244+71.44

8-23-00
Reset PK/WASHER
MDB

