

O.D.O.T. DISTRICT 2 SURVEY OFFICE (USE ONLY)

PERSONNEL

REFERENCE NO. 13

SHEET 28 OF 37

NOTES RHOADES

DATE 4/1/20

ROUTE SR 49

H.C. O'DONNELL

WEATHER CLOUDY

COUNTY WILLIAMS

R.C. BALBAUGH

TEMP. 42°

TOWNSHIP ST. JOSEPH

DWG BY NIESE

PID 94334

SECTION 9

T 6 N R 1 E

TYPE MONUMENT MAG NAIL

ON SURFACE - ~~BELOW~~ ON

OFFSET CL PAVEMENT ON LT : RT
10.3' TO RT EDGE PAVEMENT

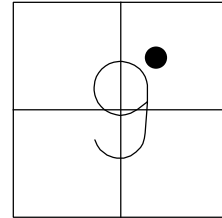
STATION: 268+16.82

HORIZ.DATUM: NAD83 (2011)

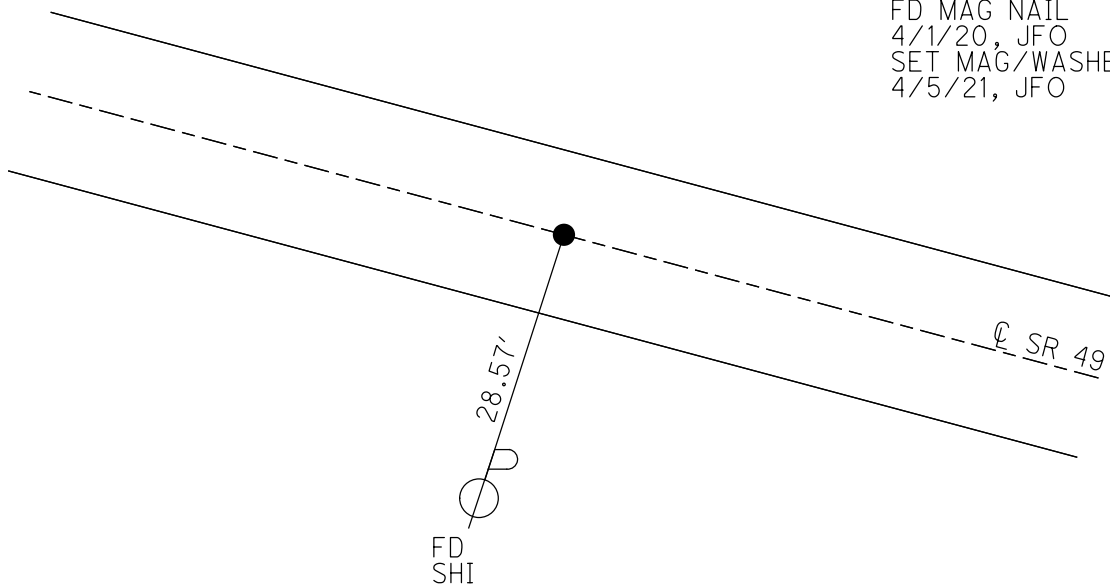
GEOID: NAVD88 2012A

GRID: NORTHING: 674161.348

EASTING: 1350465.152



RECORD:
1932 PLAN
STA. 274+51.52
FD SM.R.R.SPIKE
6/6/00, MB
SET P.K./WASHER
8/23/00, MDB
FD P.K. NAIL
SET MAG NAIL
REF13
10/12/18, JMR
FD MAG NAIL
4/1/20, JFO
SET MAG/WASHER
4/5/21, JFO



O.D.O.T. DISTRICT 2 SURVEY OFFICE

PERSONNEL

REFERENCE NO. 13

SHEET 11 OF 25

NOTES BARNHISEL

H.C. MOSEK

R.C. CANTERBURY

DATE 6-6-00

WEATHER SUNNY

TEMP. +65°

ROUTE 49

COUNTY Williams

TOWNSHIP St. Joseph

SECTION 9

T 6 N R 1 E

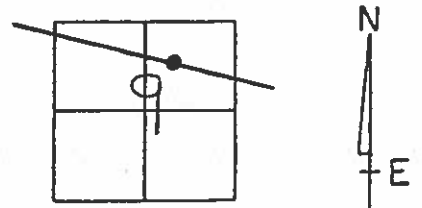
TYPE MONUMENT Sm RR Spk

ON SURFACE - ~~BELOW~~ yes

~~LEFT - & PAV'T. - RIGHT~~ yes

10.3' TO RT EDGE PAVEMENT

S.L.M. 268+14



RECORD: 1932 PLAN
Sta: 274+51.52

RESET PK/WASHER
8-23-00
MDB

