

O.D.O.T. DISTRICT 2 SURVEY OFFICE (USE ONLY)

PERSONNEL

REFERENCE NO. 14

SHEET 29 OF 37

NOTES RHOADES

DATE 4/1/20

ROUTE SR 49

H.C. O'DONNELL

WEATHER CLOUDY

COUNTY WILLIAMS

R.C. BALBAUGH

TEMP. 42°

TOWNSHIP ST. JOSPEH

DWG BY GARRETT PID 94334

SECTION 9

T 6 N R 1 E

TYPE MONUMENT 1" IPIPE

~~ON SURFACE~~ - BELOW 7"

OFFSET \odot PAVEMENT 16.0' LT : ~~RT~~

5.7' LT TO LT EDGE PAVEMENT

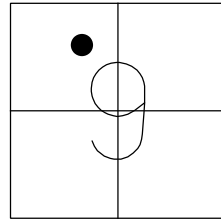
STATION: 289+17.74

HORZ. DATUM: NAD83 (2011)

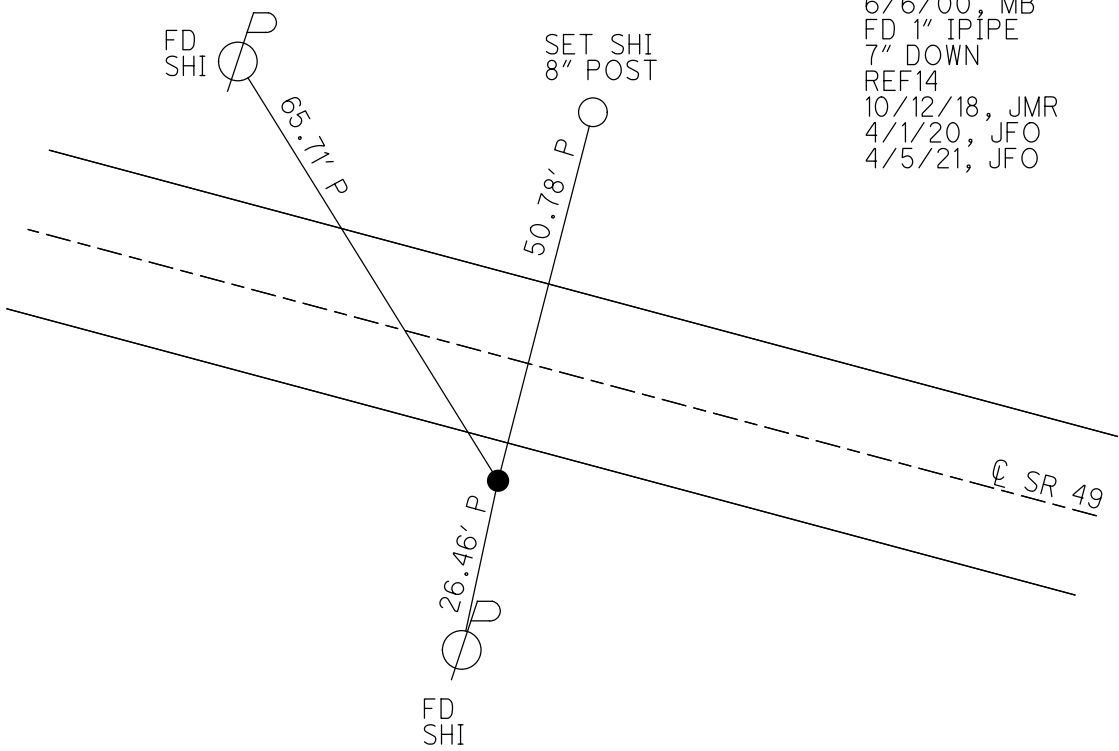
GEOID: NAVD88 2012A

GRID: NORTHING: 674564.131

EASTING: 1348403.202



RECORD: P.I.
 STA. 295+53.33
 $\Delta = 12^\circ 11' RT$
 D = 2"
 L = 609.17'
 T = 305.74'
 E = 16.27'
 R = 2864.79'
 FD 1" IPIPE
 5" DOWN
 6/6/00, MB
 FD 1" IPIPE
 7" DOWN
 REF14
 10/12/18, JMR
 4/1/20, JFO
 4/5/21, JFO



O.D.O.T. DISTRICT 2 SURVEY OFFICE

PERSONNEL

REFERENCE NO. 14

SHEET 12 OF 25

NOTES BARNHISEL

H.C. MOSEK

R.C. CANTERBURY

DATE 6-6-00

WEATHER SUNNY

TEMP. +65°

ROUTE 49

COUNTY WILLIAMS

TOWNSHIP St. Joseph

SECTION 9

T 6 N 1 E

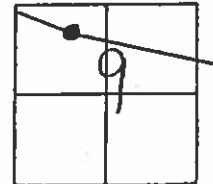
TYPE MONUMENT 1" IRON PIPE

~~ON SURFACE~~ - BELOW 5"

LEFT - CL PAV'T. - RIGHT 16.0'

5.7' CL ^{OF} LT EDGE PAVEMENT

S.L.M. 289+17



Record: PI sta: 295+53.33

$\Delta = 12^{\circ}-11'$ RT

$D = 2^{\circ}$

$L = 609.17'$

$T = 305.74'$

$E = 16.27'$

$R = 2864.79'$

