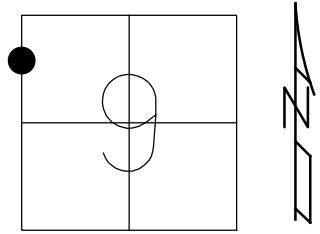


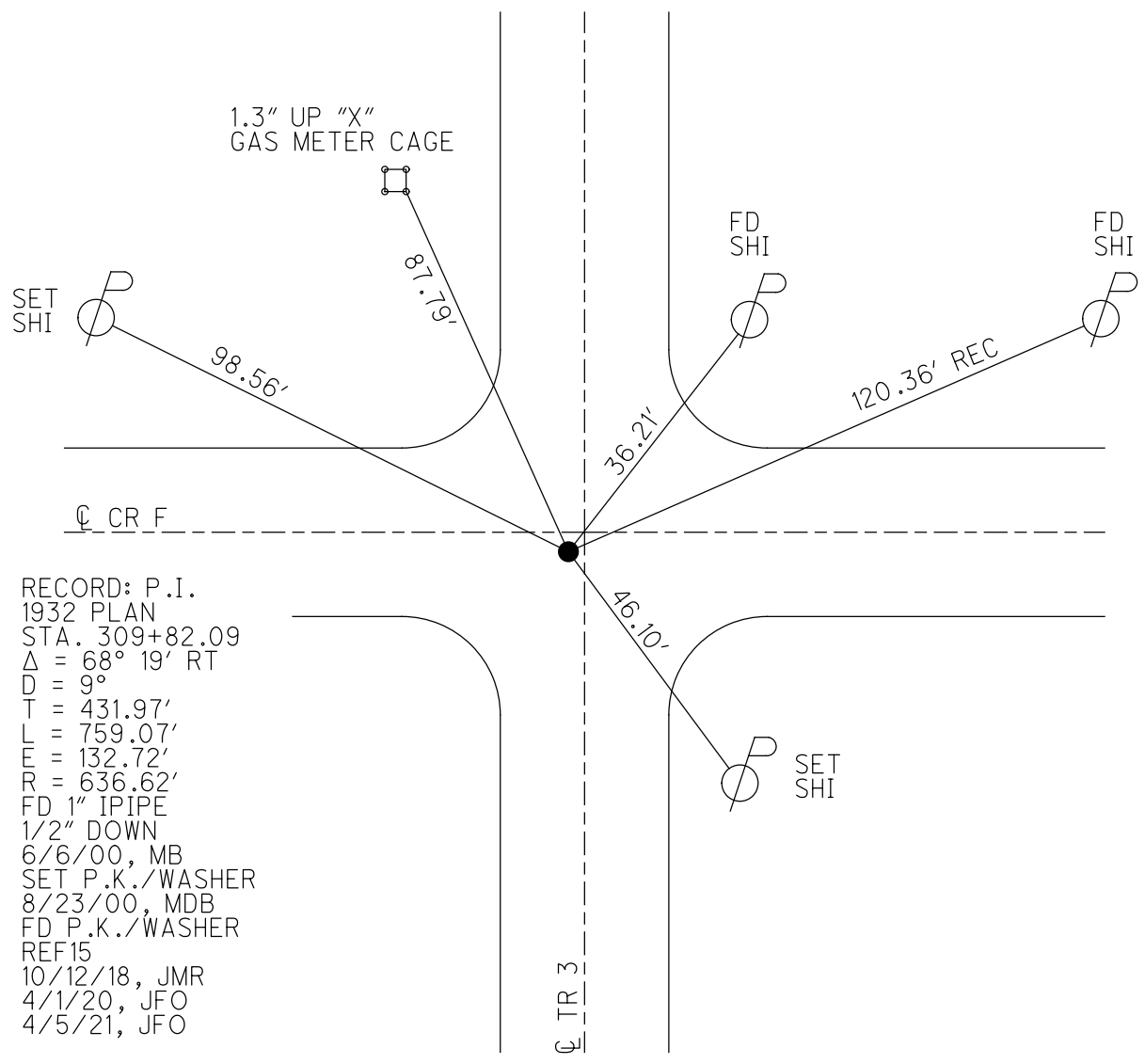
O.D.O.T. DISTRICT 2 SURVEY OFFICE (USE ONLY)

PERSONNEL _____ REFERENCE NO. 15 SHEET 30 OF 37
 NOTES RHOADES DATE 4/1/20 ROUTE SR 49
 H.C. O'DONNELL WEATHER CLOUDY COUNTY WILLIAMS
 R.C. BALBAUGH TEMP. 45° TOWNSHIP ST. JOSEPH
 DWG BY NIESE PID 94334 SECTION 9
 T 6 N R 1 E

TYPE MONUMENT P.K./WASHER
 ON SURFACE - ~~BELOW~~ ON
 OFFSET 0.5' W&S
- TO - EDGE PAVEMENT
 STATION: 303+45.64



HORZ.DATUM: NAD83 (2011) GEOID: NAVD88 2012A
 GRID: NORTHING: 675128.590 EASTING: 1347089.091



RECORD: P.I.
 1932 PLAN
 STA. 309+82.09
 $\Delta = 68^\circ 19' RT$
 $D = 9^\circ$
 $T = 431.97'$
 $L = 759.07'$
 $E = 132.72'$
 $R = 636.62'$
 FD 1" IPIPE
 1/2" DOWN
 6/6/00, MB
 SET P.K./WASHER
 8/23/00, MDB
 FD P.K./WASHER
 REF 15
 10/12/18, JMR
 4/1/20, JFO
 4/5/21, JFO

O.D.O.T. DISTRICT 2 SURVEY OFFICE

PERSONNEL

REFERENCE NO. 15

SHEET 13 OF 25

NOTES BARNHISEL

H.C. MOSEK

R.C. CANTERBURY

DATE 6-6-00

WEATHER SUNNY

TEMP. +65°

ROUTE 49

COUNTY WILLIAMS

TOWNSHIP St. Joseph

SECTION 9

T G N R I E

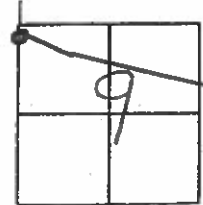
TYPE MONUMENT 1" IRON PIPE

~~ON SURFACE~~ - BELOW 1/2"

LEFT - E PAV'T. - RIGHT 0.5' WEST OF E SOUTH E, 0.5' SOUTH OF E E & W

TO EDGE PAVEMENT

S.L.M. _____



Reset AK/Washer
8-23-00
MDB

NEAR SIDE OF
SW LEG OF
GAS METER
CAGE



E PAV'T

Twp Rd #3
SR 49

89.22'

36.13'

120.36'

45.24'

SR 49

Fd Duplex
w/S

SET Shi
w/S

Co. Rd "F"

SET Shi
nw/S

RECORD: PI 1932 PLAN
Sta: 309+82.09 - CONST.
A = 68°-19' RT / (68°-19'-30")
RECORDED

D = 9°

T = 431.97'

L = 759.07'

E = 132.72'

R = 636.62'

See Vol. 136 pg. 13, Parcel # 30,
1932 for conflict of R/W
on a 8°-30' curve

E PAV'T