

O.D.O.T. DISTRICT 2 SURVEY OFFICE (USE ONLY)

PERSONNEL

REFERENCE NO. 15 A

SHEET 31 OF 37

NOTES RHOADES

DATE 4/1/20

ROUTE SR 49

H.C. O'DONNELL

WEATHER CLOUDY

COUNTY WILLIAMS

R.C. BALBAUGH

TEMP. 45°

TOWNSHIP ST. JOSEPH

DWG BY NIESE

PID 94334

SECTION 9

T 6 N R 1 E

TYPE MONUMENT MAG SHANK

ON SURFACE - ~~BELOW~~ ON

OFFSET \varnothing PAVEMENT 1.3' LT : ~~RT~~

9.3' TO LT EDGE PAVEMENT

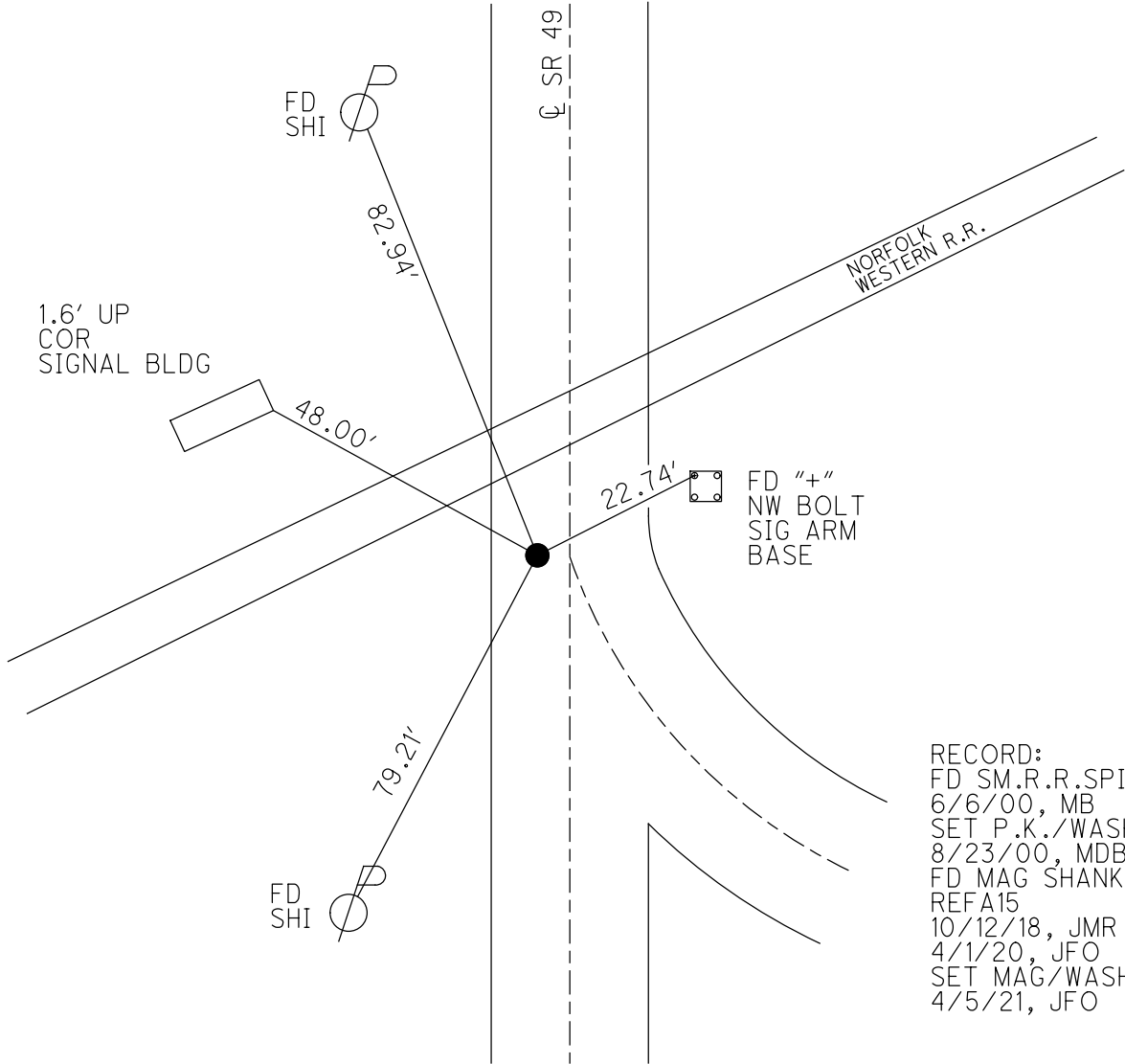
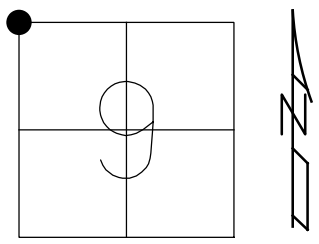
STATION: 306+27.5

HORZ.DATUM: NAD83 (2011)

GEOID: NAVD88 2012A

GRID: NORTHING: 675521.026

EASTING: 1347099.787



RECORD:
 FD SM.R.R.SPIKE
 6/6/00, MB
 SET P.K./WASHER
 8/23/00, MDB
 FD MAG SHANK
 REFA15
 10/12/18, JMR
 4/1/20, JFO
 SET MAG/WASHER
 4/5/21, JFO

O.D.O.T. DISTRICT 2 SURVEY OFFICE

PERSONNEL

REFERENCE NO. 15-A

SHEET 14 OF 25

NOTES BARNHISEL

H.C. MOSEK

R.C. CANTERBURY

DATE 6-6-00

WEATHER SUNNY

TEMP. +65°

ROUTE 49

COUNTY WILLIAMS

TOWNSHIP ST. JOSEPH

SECTION 9

T G N R I E

TYPE MONUMENT Sm RR Spk

ON SURFACE - ~~BELOW~~ yes

LEFT - 0 PAV'T. - ~~RIGHT~~ 1.3'

9.3' TO CT EDGE PAVEMENT

S.L.M. 306+35

