

O.D.O.T. DISTRICT 2 SURVEY OFFICE (USE ONLY)

PERSONNEL

REFERENCE NO. 16

SHEET 32 OF 37

NOTES RHOADES

DATE 4/1/20

ROUTE SR 49

H.C. O'DONNELL

WEATHER CLOUDY

COUNTY WILLIAMS

R.C. BALBAUGH

TEMP. 45°

TOWNSHIP ST. JOSEPH

DWG BY NIESE PID 94334

SECTION 4

T 6 N R 1 E

TYPE MONUMENT MAG NAIL

ON SURFACE - ~~BELOW~~ ON

OFFSET Q PAVEMENT ON LT : RT

11.0' TO LT EDGE PAVEMENT

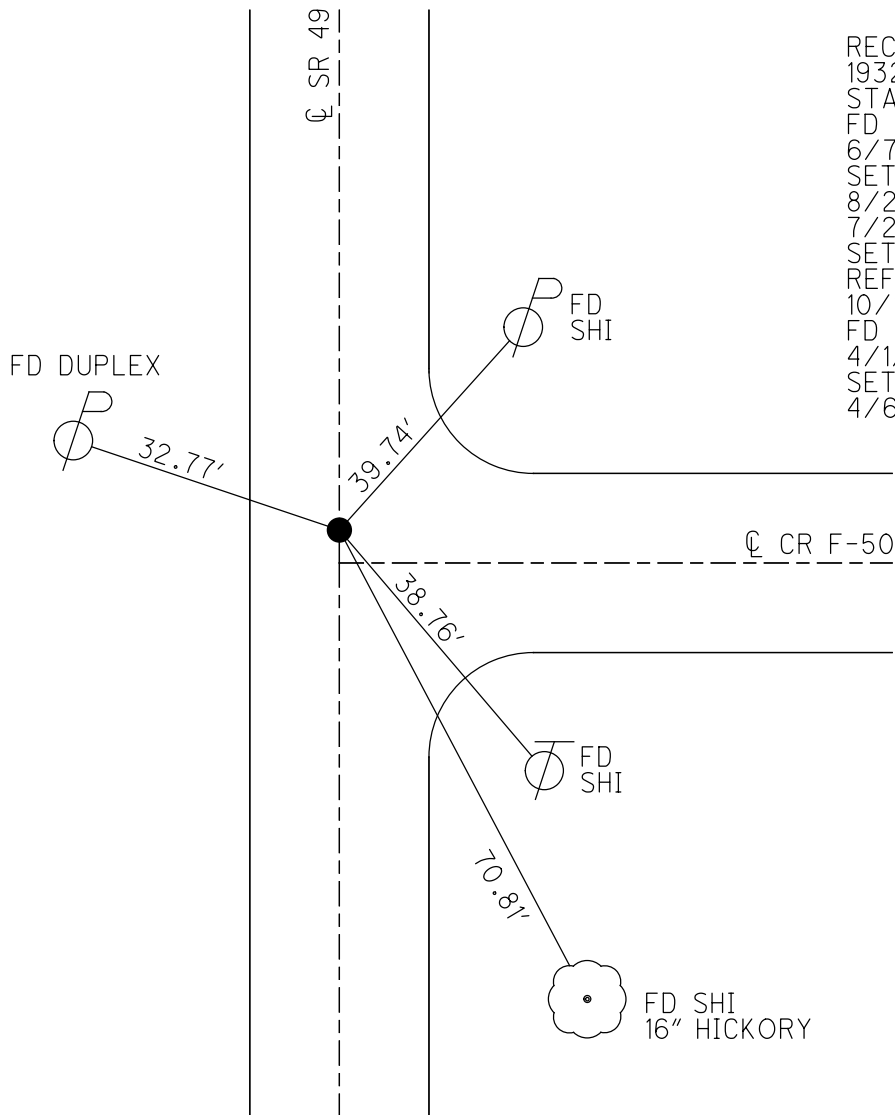
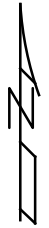
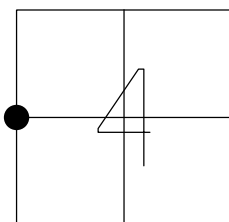
STATION: 332+64.00

HORIZ.DATUM: NAD83 (2011)

GEOID: NAVD88 2012A

GRID: NORTHING: 678156.868

EASTING: 1347171.742



RECORD:  
 1932 PLAN  
 STA. 339+27.33  
 FD R.R.SPIKE  
 6/7/00, MB  
 SET P.K./WASHER  
 8/23/00, MDB  
 7/24/18, JFO  
 SET MAG NAIL  
 REF16  
 10/12/18, JMR  
 FD MAG NAIL  
 4/1/20, JFO  
 SET MAG/WASHER  
 4/6/21, DSA

O.D.O.T. DISTRICT 2 SURVEY OFFICE

PERSONNEL \_\_\_\_\_

REFERENCE NO. 16

SHEET 15 OF 25

NOTES BARNHISEL

H.C. MOSEK

DATE 6-7-00

ROUTE 49

R.C. CANTERBURY

WEATHER SUNNY

COUNTY WILLIAMS

TEMP. +70°

TOWNSHIP St. Joseph

SECTION 4

T 6 N R 1 E

TYPE MONUMENT Sm RR SPK

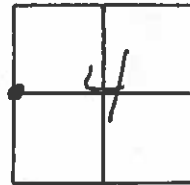
ON SURFACE - ~~BELOW~~ yes

LEFT - ~~Q~~ PAV'T. - ~~RIGHT~~ yes

11.0' TO LT EDGE PAVEMENT

S.L.M. 332+77

1.5' North of ~~E~~ EAST



Reset PK/washer  
8-23-00  
MOB

RECORD: 1932 PLAN  
Sta: 339+27.33

