

O.D.O.T. DISTRICT 2 SURVEY OFFICE (USE ONLY)

PERSONNEL

REFERENCE NO. 18

SHEET 34 OF 37

NOTES RHOADES DATE 4/6/21
 H.C. AUBLE WEATHER FAIR
 R.C. NIESE TEMP. 46°

ROUTE SR 49
 COUNTY WILLIAMS
 TOWNSHIP FLORENCE
 SECTION 33
 T 7 N R 1 E

DWG BY NIESE PID 94334

TYPE MONUMENT MAG/WASHER

ON SURFACE - ~~BELOW~~ ON

OFFSET CL PAVEMENT ON LT : RT

10.8' TO RT EDGE PAVEMENT

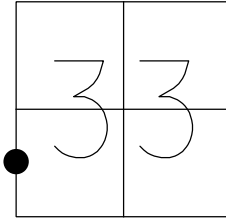
STATION: 371+83.49

HORIZ.DATUM: NAD83(2011)

GEOID: NAVD88 2012A

GRID: NORTHING: 682075.719

EASTING: 1347242.566



FD 5/8" IPIN
5" DOWN
CPC18

49.39' P

FD 5/8" IPIN
CPB18

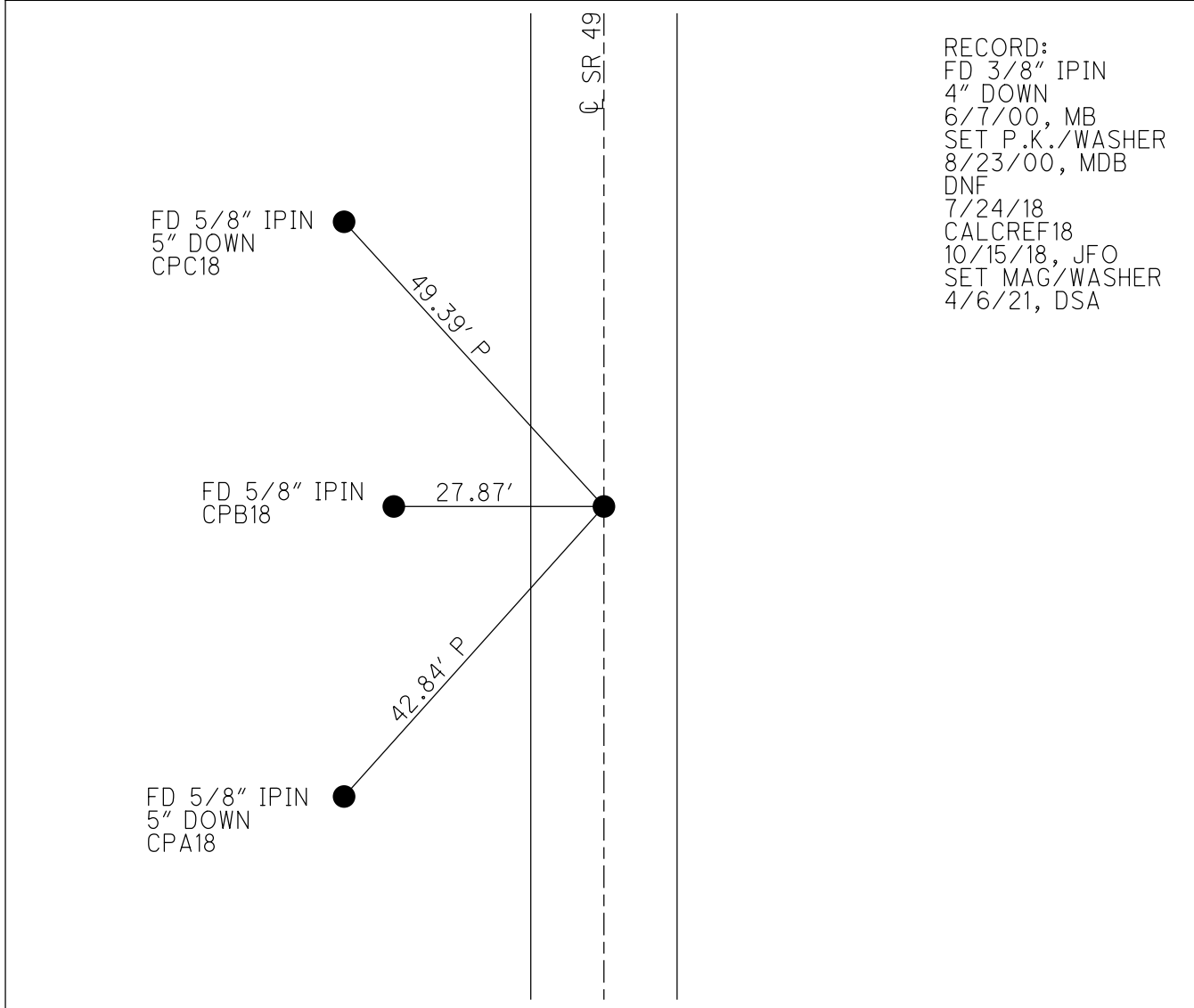
27.87'

FD 5/8" IPIN
5" DOWN
CPA18

42.84' P

CL SR 49

RECORD:
 FD 3/8" IPIN
 4" DOWN
 6/7/00, MB
 SET P.K./WASHER
 8/23/00, MDB
 DNF
 7/24/18
 CALCREF18
 10/15/18, JFO
 SET MAG/WASHER
 4/6/21, DSA



O.D.O.T. DISTRICT 2 SURVEY OFFICE

PERSONNEL

REFERENCE NO. 18

SHEET 17 OF 25

NOTES BARNAISEL

H.C. MOSE

R.C. CANTERBURY

DATE 6-7-00

WEATHER SUNNY

TEMP. +70°

ROUTE 49

COUNTY WILLIAMS

TOWNSHIP FLORENCE

SECTION 33

T 7 N 1 R 1 E

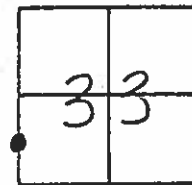
TYPE MONUMENT 3/8" IRON PIN

ON SURFACE - BELOW 4"

LEFT - C PAV'T. - RIGHT yes

10.8' TO RT EDGE PAVEMENT

S.L.M. 372+03



RESET PK/WASHER
8-23-00
TMD B

