

O.D.O.T. DISTRICT 2 SURVEY OFFICE (USE ONLY)

PERSONNEL

REFERENCE NO. 20

SHEET 36 OF 37

NOTES RHOADES DATE 4/2/20

H.C. O'DONNELL WEATHER SUNNY

R.C. BALBAUGH TEMP. 45°

ROUTE SR 49

COUNTY WILLIAMS

TOWNSHIP FLORENCE

SECTION 33

DWG BY NIESE PID 894334

T 7 N R 1 E

TYPE MONUMENT MAG/WASHER

ON SURFACE - ~~BELOW~~ ON

OFFSET 0.3' LT : ~~RT~~

- TO - EDGE PAVEMENT

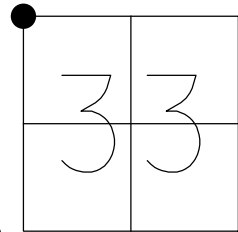
STATION: 411+30.81

HORIZ.DATUM: NAD83 (2011)

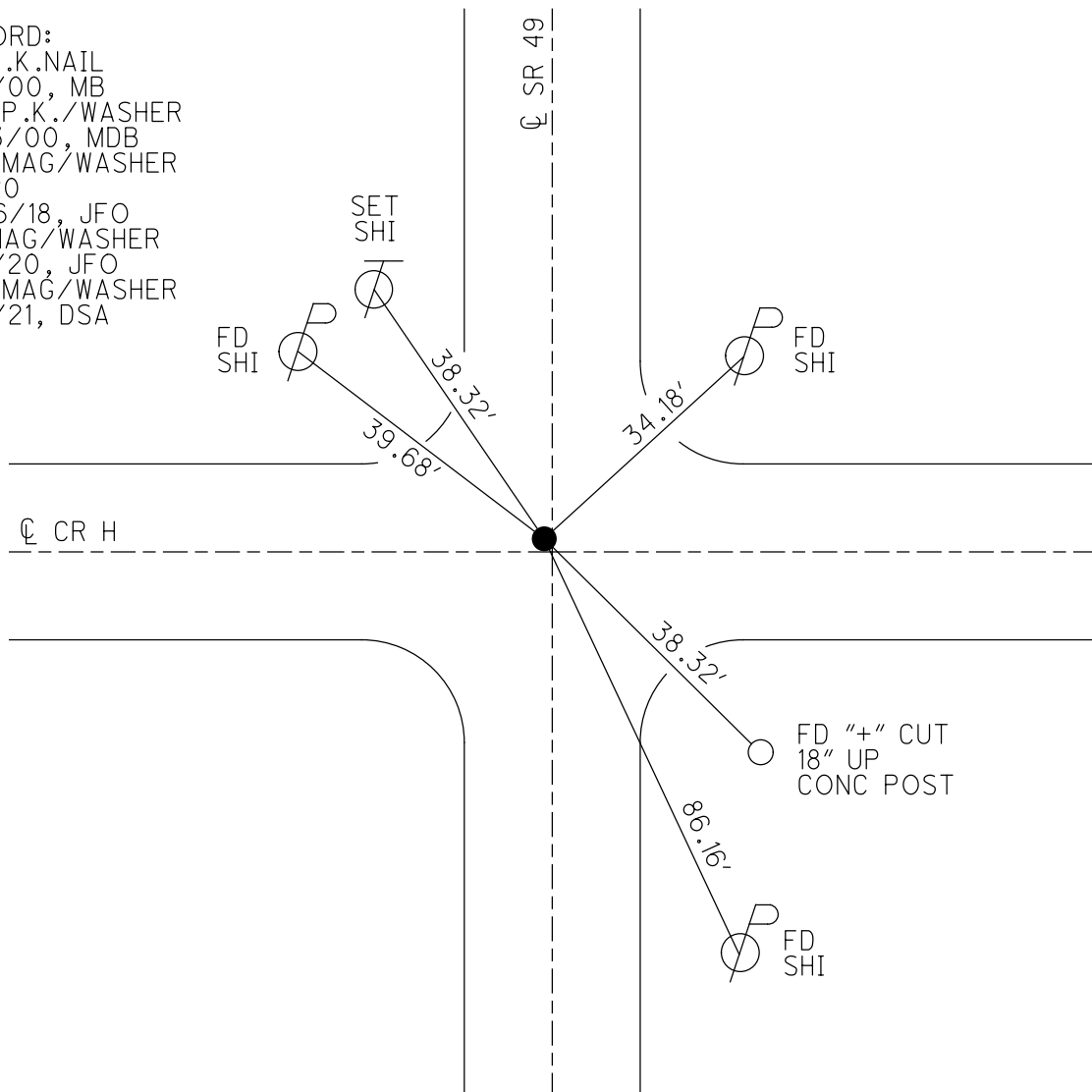
GEOID: NAVD83 2012A

GRID: NORTHING: 686022.287

EASTING: 1347319.623



RECORD:
 FD P.K.NAIL
 6/7/00, MB
 SET P.K./WASHER
 8/23/00, MDB
 SET MAG/WASHER
 REF20
 10/16/18, JFO
 FD MAG/WASHER
 4/2/20, JFO
 SET MAG/WASHER
 4/6/21, DSA



O.D.O.T. DISTRICT 2 SURVEY OFFICE

PERSONNEL

REFERENCE NO. 20

SHEET 19 OF 25

NOTES BARNHISEL

H.C. MOSEK

DATE 6-7-00

ROUTE 49

R.C. CANTERBURY

WEATHER SUNNY

COUNTY WILLIAMS

TEMP. +75°

TOWNSHIP FLORENCE

SECTION 33

T 7 N R 1 E

TYPE MONUMENT PK NAIL

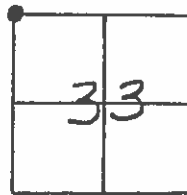
ON SURFACE - ~~BEL~~ YES

LEFT - ~~E~~ PAV'T. - ~~RIGHT~~ 0.3'

- JO - EDGE PAVEMENT

S.L.M. 411+55

1' NORTH OF E WEST



RESET PK/WASHER
8-23-00
M.D.B.

